

6X His tag antibody [GT359] (HRP)

Cat. No. GTX628914-01

Host	Mouse
Clonality	Monoclonal
Isotype	IgG3
Applications	WB, ELISA
Reactivity	Species independent

References (44)

Package

100 µl, 25 µl

Applications

Application Note

*Optimal dilutions/concentrations should be determined by the researcher.

Suggested dilution	Recommended dilution
WB	1:1000-1:20000
ELISA	Assay dependent

Not tested in other applications.

Properties

Form	Liquid
Buffer	0.05M Tris, 0.15M NaCl, 1%BSA
Preservative	0.025% ProClin 300
Storage	Store as concentrated solution. Centrifuge briefly prior to opening vial. For short-term storage (1-2 weeks), store at 4°C. For long-term storage, aliquot and store at -20°C or below. Avoid multiple freeze-thaw cycles.
Concentration	0.14 mg/ml (Please refer to the vial label for the specific concentration.)
Immunogen	The immunogen used to generate this antibody corresponds to 6X His tag
Purification	Affinity purified by Protein A. From tissue culture supernatant
Conjugation	Horseradish peroxidase(HRP)

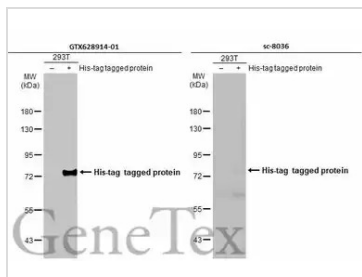
Note

For laboratory research use only. Not for any clinical, therapeutic, or diagnostic use in humans or animals. Not for animal or human consumption.

Purchasers shall not, and agree not to enable third parties to, analyze, copy, reverse engineer or otherwise attempt to determine the structure or sequence of the product.

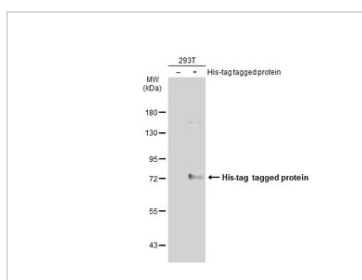


For full product information, images and publications, please visit our [website](#).

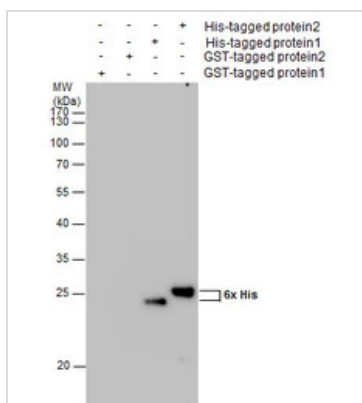
DATA IMAGES

GTX628914-01 WB Image

Non-transfected (–) and transfected (+) 293T whole cell extracts (30 µg) were separated by 7.5% SDS-PAGE, and the membranes were blotted with 6X His tag antibody [GT359] (GTX628914-01) diluted at 1:5000 and competitor's antibody (sc-8036) diluted at 1:5000.

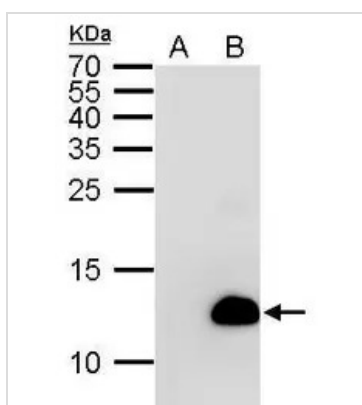
*The competitor is not affiliated with GeneTex and does not endorse this product.


GTX628914-01 WB Image

Non-transfected (–) and transfected (+) 293T whole cell extracts (30 µg) were separated by 7.5% SDS-PAGE, and the membrane was blotted with 6X His tag antibody [GT359] (GTX628914-01) diluted at 1:5000.


GTX628914-01 WB Image

6x His antibody conjugated HRP detects 6x His protein by western blot analysis. IPTG-induced (+,) cell lysate from E. coli expressing different GST-tagged proteins and His-tagged proteins (2 µl) were separated by 12% SDS-PAGE, and the membrane was blotted with 6x His antibody conjugated HRP (GTX628914-01) at a dilution of 1:20000.


GTX628914-01 WB Image

6X His tag antibody [GT359] (HRP) detects 6xHis Tag protein by Western blot analysis.

A. 5 µl non-induced cell lysate from E. coli expressing His-tagged proteins

B. 5 µl IPTG-induced cell lysate from E. coli expressing His-tagged proteins

15 % SDS-PAGE

6X His tag antibody [GT359] (HRP) (GTX628914-01) dilution: 1:5000



For full product information, images and publications, please visit our [website](http://www.genetex.com).