

## ADAR1 antibody [GT1066]

Cat. No. GTX629000

Host	Mouse
Clonality	Monoclonal
Isotype	IgG1
Application	WB, ICC/IF, IP
Reactivity	Human

Package  
100 µl, 25 µl

## APPLICATION

## Application Note

\*Optimal dilutions/concentrations should be determined by the researcher.

Suggested dilution	Recommended dilution
WB	1:500-1:3000
ICC/IF	1:100-1:1000
IP	1:100-1:500

Not tested in other applications.

Calculated MW 136 kDa. ([Note](#))

## PROPERTIES

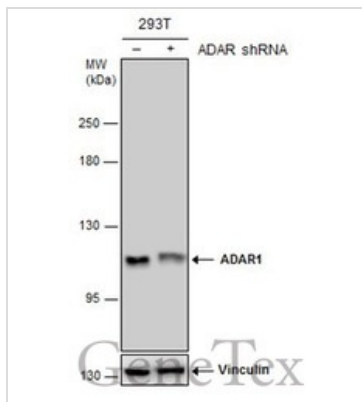
Form	Liquid
Buffer	PBS, 20% Glycerol
Preservative	No Preservative
Storage	Store as concentrated solution. Centrifuge briefly prior to opening vial. For short-term storage (1-2 weeks), store at 4°C. For long-term storage, aliquot and store at -20°C or below. Avoid multiple freeze-thaw cycles.
Concentration	1 mg/ml (Please refer to the vial label for the specific concentration.)
Immunogen	Recombinant protein encompassing a sequence within the center region of human ADAR1. The exact sequence is proprietary.
Purification	Affinity purified by Protein G.
Conjugation	Unconjugated

**Note** For laboratory research use only. Not for any clinical, therapeutic, or diagnostic use in humans or animals. Not for animal or human consumption.

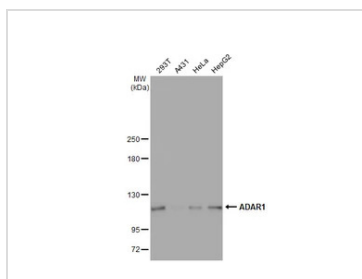
Purchasers shall not, and agree not to enable third parties to, analyze, copy, reverse engineer or otherwise attempt to determine the structure or sequence of the product.



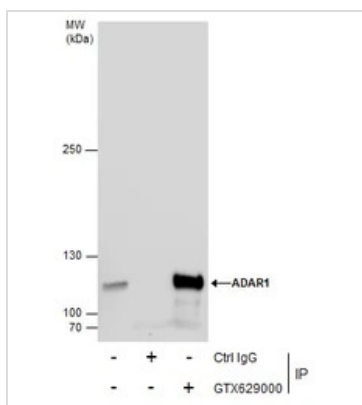
For full product information, images and publications, please visit our [website](#).

**DATA IMAGES**

**GTX629000 WB Image**

Non-transfected (–) and transfected (+) 293T whole cell extracts (30 µg) were separated by 5% SDS-PAGE, and the membrane was blotted with ADAR1 antibody [GT1066] (GTX629000) diluted at 1:500.


**GTX629000 WB Image**

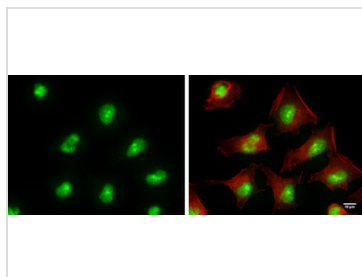
Various whole cell extracts (30 µg) were separated by 5% SDS-PAGE, and the membrane was blotted with ADAR1 antibody [GT1066] (GTX629000) diluted at 1:1000. The HRP-conjugated anti-mouse IgG antibody (GTX213111-01) was used to detect the primary antibody.


**GTX629000 IP Image**

Immunoprecipitation of ADAR1 protein from 293T whole cell extracts using 5 µg of ADAR1 antibody [GT1066] (GTX629000).

Western blot analysis was performed using ADAR1 antibody [GT1066] (GTX629000).

EasyBlot anti-Mouse IgG (GTX221667-01) was used as a secondary reagent.


**GTX629000 ICC/IF Image**

ADAR1 antibody [GT1066] detects ADAR1 protein at nucleus by immunofluorescent analysis.

Sample: HeLa cells were fixed in 4% paraformaldehyde for 10 min.

Green: ADAR1 protein stained by ADAR1 antibody [GT1066] (GTX629000) diluted at 1:100.

Red: phalloidin, a cytoskeleton marker, diluted at 1:100.

Scale bar = 10 µm.



For full product information, images and publications, please visit our [website](https://www.genetex.com).