

PAF49 antibody [GT635]

Cat. No. GTX629076

Host	Mouse
Clonality	Monoclonal
Isotype	IgG2a
Application	WB, ICC/IF
Reactivity	Human

Package
100 µl, 25 µl

APPLICATION

Application Note

*Optimal dilutions/concentrations should be determined by the researcher.

Suggested dilution	Recommended dilution
WB	1:500-1:3000
ICC/IF	1:100-1:1000

Not tested in other applications.

Calculated MW 55 kDa. ([Note](#))

PROPERTIES

Form	Liquid
Buffer	PBS
Preservative	No preservative
Storage	Store as concentrated solution. Centrifuge briefly prior to opening vial. For short-term storage (1-2 weeks), store at 4°C. For long-term storage, aliquot and store at -20°C or below. Avoid multiple freeze-thaw cycles.
Concentration	1 mg/ml (Please refer to the vial label for the specific concentration.)
Immunogen	Recombinant protein encompassing a sequence within the center region of human PAF49. The exact sequence is proprietary.
Purification	Affinity purified by Protein G.
Conjugation	Unconjugated

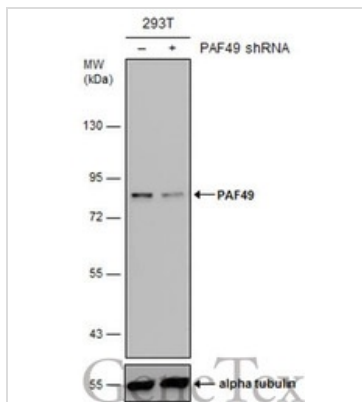
Note

For laboratory research use only. Not for any clinical, therapeutic, or diagnostic use in humans or animals. Not for animal or human consumption.

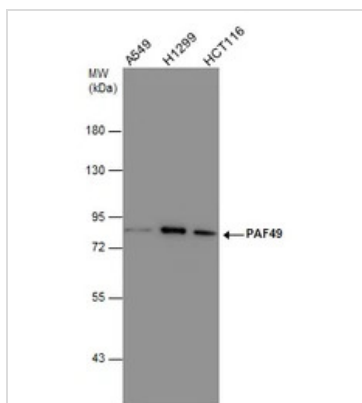
Purchasers shall not, and agree not to enable third parties to, analyze, copy, reverse engineer or otherwise attempt to determine the structure or sequence of the product.



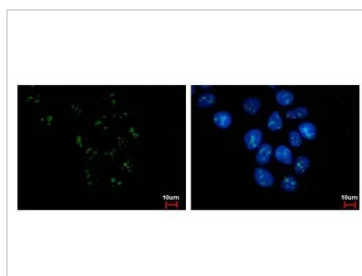
For full product information, images and publications, please visit our [website](#).

DATA IMAGES

GTX629076 WB Image

Non-transfected (–) and transfected (+) 293T whole cell extracts (50 µg) were separated by 7.5% SDS-PAGE, and the membrane was blotted with PAF49 antibody [GT635] (GTX629076) diluted at 1:1000. The HRP-conjugated anti-mouse IgG antibody (GTX213111-01) was used to detect the primary antibody.


GTX629076 WB Image

Various whole cell extracts (30 µg) were separated by 7.5% SDS-PAGE, and the membrane was blotted with PAF49 antibody (GTX629076) diluted at 1:1000.

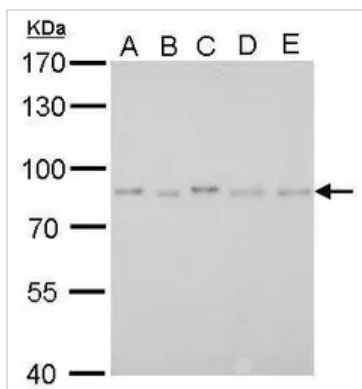

GTX629076 ICC/IF Image

CD3EAP antibody detects CD3EAP protein at Nucleus by immunofluorescent analysis.

Sample: U2OS cells were fixed in 4% paraformaldehyde/PBS for 15 min.

Green: CD3EAP protein stained by CD3EAP antibody (GTX629076) diluted at 1:500.

Blue: Hoechst 33342 staining.


GTX629076 WB Image

PAF49 antibody [GT635] detects CD3EAP protein by Western blot analysis.

A. 30 µg 293T whole cell lysate/extract

B. 30 µg A431 whole cell lysate/extract

C. 30 µg HeLa whole cell lysate/extract

D. 30 µg HepG2 whole cell lysate/extract

E. 30 µg A375 whole cell lysate/extract

7.5 % SDS-PAGE

PAF49 antibody [GT635] (GTX629076) dilution: 1:1000



For full product information, images and publications, please visit our [website](https://www.genetex.com).