

Transgelin antibody [GT4511]

Cat. No. GTX629078

Host	Mouse
Clonality	Monoclonal
Isotype	IgG1
Application	WB, IHC-P
Reactivity	Human, Mouse, Rat

Package
100 µl, 25 µl

APPLICATION

Application Note

*Optimal dilutions/concentrations should be determined by the researcher.

Suggested dilution	Recommended dilution
WB	1:500-1:3000
IHC-P	1:100-1:1000

Not tested in other applications.

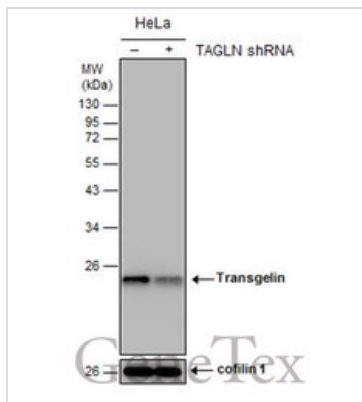
Calculated MW 23 kDa. ([Note](#))

PROPERTIES

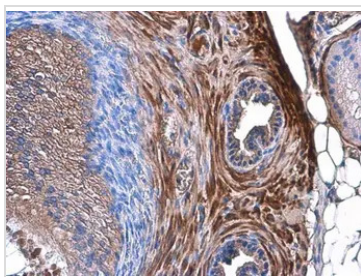
Form	Liquid
Buffer	PBS
Preservative	No preservative
Storage	Store as concentrated solution. Centrifuge briefly prior to opening vial. For short-term storage (1-2 weeks), store at 4°C. For long-term storage, aliquot and store at -20°C or below. Avoid multiple freeze-thaw cycles.
Concentration	1 mg/ml (Please refer to the vial label for the specific concentration.)
Immunogen	Recombinant protein encompassing a sequence within the center region of human Transgelin. The exact sequence is proprietary.
Purification	Affinity purified by Protein G.
Conjugation	Unconjugated
Note	<p>For laboratory research use only. Not for any clinical, therapeutic, or diagnostic use in humans or animals. Not for animal or human consumption.</p> <p>Purchasers shall not, and agree not to enable third parties to, analyze, copy, reverse engineer or otherwise attempt to determine the structure or sequence of the product.</p>



For full product information, images and publications, please visit our [website](#).

DATA IMAGES

GTX629078 WB Image

Non-transfected (–) and transfected (+) HeLa whole cell extracts (15 µg) were separated by 12% SDS-PAGE, and the membrane was blotted with Transgelin antibody [GT4511] (GTX629078) diluted at 1:1000.

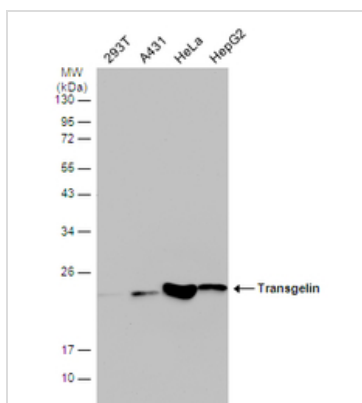

GTX629078 IHC-P Image

Transgelin antibody [GT4511] detects Transgelin protein at cytoplasm by immunohistochemical analysis.

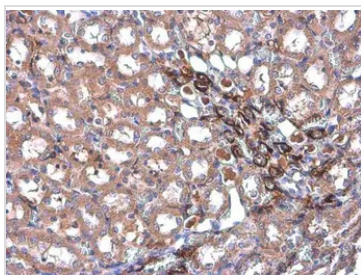
Sample: Paraffin-embedded mouse prostate.

Transgelin stained by Transgelin antibody [GT4511] (GTX629078) diluted at 1:500.

Antigen Retrieval: Citrate buffer, pH 6.0, 15 min


GTX629078 WB Image

Various whole cell extracts (30 µg) were separated by 12% SDS-PAGE, and the membrane was blotted with Transgelin antibody [GT4511] (GTX629078) diluted at 1:1000. The HRP-conjugated anti-mouse IgG antibody (GTX213111-01) was used to detect the primary antibody.


GTX629078 IHC-P Image

Transgelin antibody [GT4511] detects Transgelin protein at cytoplasm by immunohistochemical analysis.

Sample: Paraffin-embedded rat kidney.

Transgelin stained by Transgelin antibody [GT4511] (GTX629078) diluted at 1:500.

Antigen Retrieval: Citrate buffer, pH 6.0, 15 min



For full product information, images and publications, please visit our [website](http://www.genetex.com).