

# Dengue virus Envelope protein antibody [GT643]

**Cat. No. GTX629117**

<b>Host</b>	Mouse
<b>Clonality</b>	Monoclonal
<b>Isotype</b>	IgG2b
<b>Application</b>	WB, ICC/IF, FACS, IHC-P (cell pellet)
<b>Reactivity</b>	Dengue virus 2, Dengue virus 4

Reference ( 7 )  
 Package  
 100 µl, 25 µl

## APPLICATION

### Application Note

\*Optimal dilutions/concentrations should be determined by the researcher.

Suggested dilution	Recommended dilution
WB	1:500-1:3000
ICC/IF	1:100-1:2000
FACS	Assay dependent
IHC-P (cell pellet)	Assay dependent

Not tested in other applications.

<b>Calculated MW</b>	51-60 kDa. ( <a href="#">Note</a> )
<b>Product Note</b>	The validated Dengue virus serotype for each application may differ. Please refer to the validated data. This antibody does not cross-react with YFV, JEV, Zika, and CHIKV Envelope protein.

## PROPERTIES

<b>Form</b>	Liquid
<b>Buffer</b>	PBS
<b>Preservative</b>	No preservative
<b>Storage</b>	Store as concentrated solution. Centrifuge briefly prior to opening vial. For short-term storage (1-2 weeks), store at 4°C. For long-term storage, aliquot and store at -20°C or below. Avoid multiple freeze-thaw cycles.
<b>Concentration</b>	1 mg/ml (Please refer to the vial label for the specific concentration.)
<b>Immunogen</b>	Recombinant protein encompassing a sequence within the center region of Dengue virus Envelope protein (Dengue virus 2 (strain 16681 PDK 53)). The exact sequence is proprietary.
<b>Purification</b>	Affinity purified by Protein G.
<b>Conjugation</b>	Unconjugated

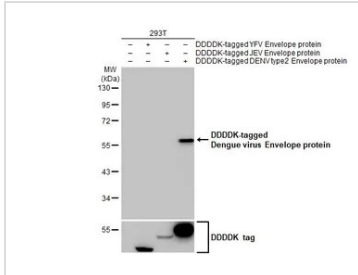


For full product information, images and publications, please visit our [website](#).

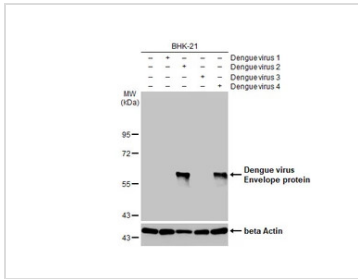
For laboratory research use only. Not for any clinical, therapeutic, or diagnostic use in humans or animals. Not for animal or human consumption.

**Note**

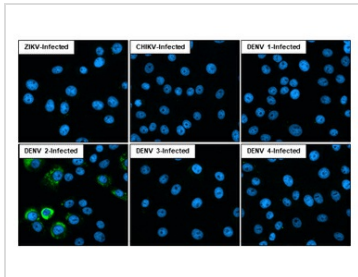
Purchasers shall not, and agree not to enable third parties to, analyze, copy, reverse engineer or otherwise attempt to determine the structure or sequence of the product.

**DATA IMAGES**

**GTX629117 WB Image**

Non-transfected (–) and transfected (+) 293T whole cell extracts were separated by 10% SDS-PAGE, and the membrane was blotted with Dengue virus Envelope protein antibody [GT643] (GTX629117) diluted at 1:5000. The HRP-conjugated anti-mouse IgG antibody (GTX213111-01) was used to detect the primary antibody.


**GTX629117 WB Image**

Non-infected (–) and infected (+) BHK-21 whole cell extracts were separated by 10% SDS-PAGE, and the membrane was blotted with Dengue virus Envelope protein antibody [GT643] (GTX629117) diluted at 1:1000. The HRP-conjugated anti-mouse IgG antibody (GTX213111-01) was used to detect the primary antibody.

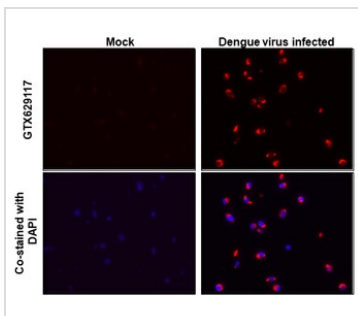

**GTX629117 ICC/IF Image**

Immunofluorescent analysis of Dengue virus infected cells using Dengue virus Envelope protein antibody [GT643] antibody (GTX629117).

Sample: Multiple virus infected cells slide.

Green: Dengue virus Envelope protein antibody [GT643] antibody (GTX629117) diluted at 1:100.

Blue: Fluoroshield with DAPI (GTX30920).


**GTX629117 IHC-P (cell pellet) Image**

Dengue virus Envelope protein antibody [GT643] detects Dengue virus Envelope protein protein at cytoplasm by immunohistochemical analysis.

Sample: Paraffin-embedded dengue virus BHK-21.

Red: Dengue virus Envelope protein stained by Dengue virus Envelope protein antibody [GT643] (GTX629117) diluted at 1:2000.

Blue: Fluoroshield with DAPI (GTX30920).

Antigen Retrieval: Citrate buffer, pH 6.0, 15 min



For full product information, images and publications, please visit our [website](https://www.genetex.com).