

ATG12 antibody [EPR4800], C-term

Cat. No. GTX62935

Host	Rabbit
Clonality	Monoclonal
Isotype	IgG
Applications	WB, ICC/IF, IHC-P
Reactivity	Human

References (1)

Package

100 µl

Applications

Application Note

*Optimal dilutions/concentrations should be determined by the researcher.

Suggested dilution	Recommended dilution
WB	Assay dependent
ICC/IF	Assay dependent
IHC-P	Assay dependent

Not tested in other applications.

Calculated MW 15 kDa. ([Note](#))

Properties

Form	Liquid
Buffer	PBS, 50% Glycerol, 0.05% BSA
Preservative	0.01% Sodium azide
Storage	Store as concentrated solution. Centrifuge briefly prior to opening vial. For short-term storage (1-2 weeks), store at 4°C. For long-term storage, aliquot and store at -20°C or below. Avoid multiple freeze-thaw cycles.
Immunogen	Synthetic peptide corresponding to residues on the C-terminus in Human Apg12.
Purification	Tissue culture supernatant
Conjugation	Unconjugated

Note

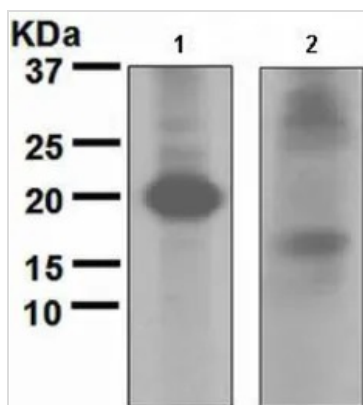
For laboratory research use only. Not for any clinical, therapeutic, or diagnostic use in humans or animals. Not for animal or human consumption.

Purchasers shall not, and agree not to enable third parties to, analyze, copy, reverse engineer or otherwise attempt to determine the structure or sequence of the product.



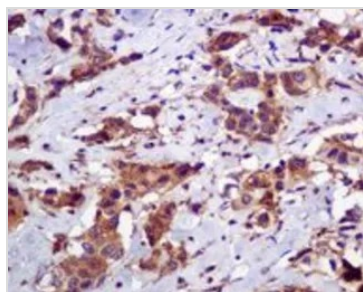
For full product information, images and publications, please visit our [website](#).

DATA IMAGES



GTx62935 WB Image

WB analysis of lysates from (1) Apg12-transfected and (2) non-transfected 293T cells (10 µg per lane) using Apg12 antibody [EPR4800] at a dilution of 1:1,000.



GTx62935 IHC-P Image

IHC-P analysis of human breast carcinoma using Apg12 antibody [EPR4800] at a dilution of 1:250.



For full product information, images and publications, please visit our [website](https://www.genetex.com).