

HMGB1 antibody [GT412]

Cat. No. GTX629400

Host	Mouse
Clonality	Monoclonal
Isotype	IgG2a
Applications	WB, ICC/IF, IHC-P
Reactivity	Human, Mouse, Rat

References (1)

Package

100 µl, 25 µl

Applications

Application Note

*Optimal dilutions/concentrations should be determined by the researcher.

Suggested dilution	Recommended dilution
WB	1:500-1:3000
ICC/IF	1:100-1:1000
IHC-P	1:100-1:1000

Not tested in other applications.

Calculated MW 25 kDa. ([Note](#))

Properties

Form	Liquid
Buffer	PBS
Preservative	No preservatives
Storage	Store as concentrated solution. Centrifuge briefly prior to opening vial. For short-term storage (1-2 weeks), store at 4°C. For long-term storage, aliquot and store at -20°C or below. Avoid multiple freeze-thaw cycles.
Concentration	0.79 mg/ml (Please refer to the vial label for the specific concentration.)
Immunogen	Carrier-protein conjugated synthetic peptide encompassing a sequence within the N-terminus region of human HMGB1. The exact sequence is proprietary.
Purification	Affinity purified by Protein G.
Conjugation	Unconjugated

Note

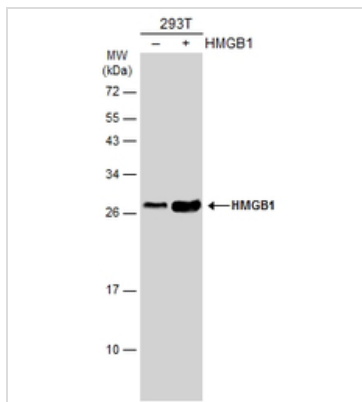
For laboratory research use only. Not for any clinical, therapeutic, or diagnostic use in humans or animals. Not for animal or human consumption.

Purchasers shall not, and agree not to enable third parties to, analyze, copy, reverse engineer or otherwise attempt to determine the structure or sequence of the product.



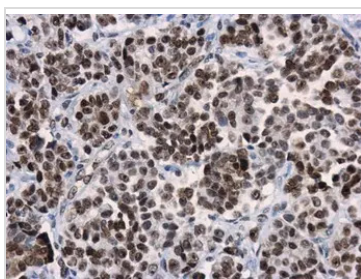
For full product information, images and publications, please visit our [website](#).

DATA IMAGES



GTX629400 WB Image

Non-transfected (-) and transfected (+) 293T whole cell extracts (30 µg) were separated by 12% SDS-PAGE, and the membrane was blotted with HMGB1 antibody [GT412] (GTX629400) diluted at 1:3000. The HRP-conjugated anti-mouse IgG antibody (GTX213111-01) was used to detect the primary antibody.



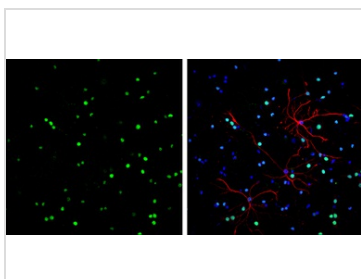
GTX629400 IHC-P Image

HMGB1 antibody [GT412] detects HMGB1 protein at nucleus in human ovarian cancer by immunohistochemical analysis.

Sample: Paraffin-embedded human ovarian cancer.

HMGB1 antibody [GT412] (GTX629400) diluted at 1:250.

Antigen Retrieval: Citrate buffer, pH 6.0, 15 min



GTX629400 ICC/IF Image

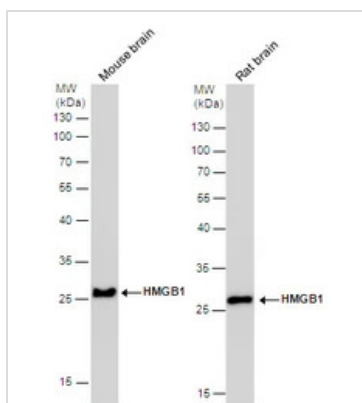
HMGB1 antibody [GT412] detects HMGB1 protein at nucleus by immunofluorescent analysis.

Sample: DIV9 rat E18 primary cortical neurons were fixed in 4% paraformaldehyde at RT for 15 min.

Green: HMGB1 protein stained by HMGB1 antibody [GT412] (GTX629400) diluted at 1:500.

Red: GFAP, a glia cell marker, stained by GFAP antibody (GTX27260) diluted at 1:1000.

Blue: Fluoroshield with DAPI (GTX30920).



GTX629400 WB Image

HMGB1 antibody [GT412] detects HMGB1 protein by western blot analysis. Mouse tissue extracts and Rat tissue extracts (50 µg) were separated by 12% SDS-PAGE, and the membrane was blotted with HMGB1 antibody [GT412] (GTX629400) diluted at 1:1000.



For full product information, images and publications, please visit our [website](https://www.genetex.com).