

cIAP1 antibody [GT422]

Cat. No. GTX629402

Host	Mouse
Clonality	Monoclonal
Isotype	IgG2a
Application	WB, ICC/IF
Reactivity	Human

Package
100 µl, 25 µl

APPLICATION

Application Note

*Optimal dilutions/concentrations should be determined by the researcher.

Suggested dilution	Recommended dilution
WB	1:500-1:3000
ICC/IF	1:100-1:1000

Not tested in other applications.

Calculated MW 70 kDa. ([Note](#))

PROPERTIES

Form	Liquid
Buffer	PBS
Preservative	No preservative
Storage	Store as concentrated solution. Centrifuge briefly prior to opening vial. For short-term storage (1-2 weeks), store at 4°C. For long-term storage, aliquot and store at -20°C or below. Avoid multiple freeze-thaw cycles.
Concentration	1 mg/ml (Please refer to the vial label for the specific concentration.)
Immunogen	Recombinant protein encompassing a sequence within the center region of human cIAP1. The exact sequence is proprietary.
Purification	Affinity purified by Protein G.
Conjugation	Unconjugated

Note

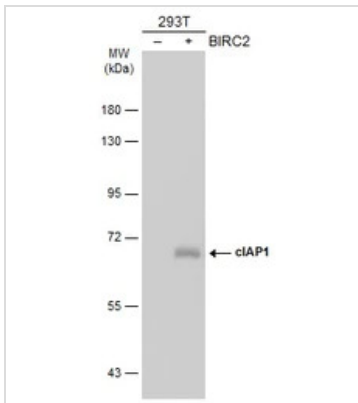
For laboratory research use only. Not for any clinical, therapeutic, or diagnostic use in humans or animals. Not for animal or human consumption.

Purchasers shall not, and agree not to enable third parties to, analyze, copy, reverse engineer or otherwise attempt to determine the structure or sequence of the product.



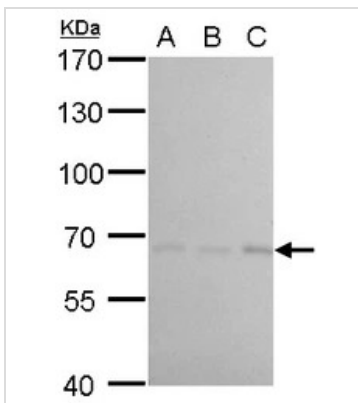
For full product information, images and publications, please visit our [website](#).

DATA IMAGES



GTx629402 WB Image

Non-transfected (-) and transfected (+) 293T whole cell extracts (30 µg) were separated by 7.5% SDS-PAGE, and the membrane was blotted with cIAP1 antibody [GT422] (GTx629402) diluted at 1:1000. The HRP-conjugated anti-mouse IgG antibody (GTx213111-01) was used to detect the primary antibody.



GTx629402 WB Image

cIAP1 antibody [GT422] detects cIAP1 protein by western blot analysis.

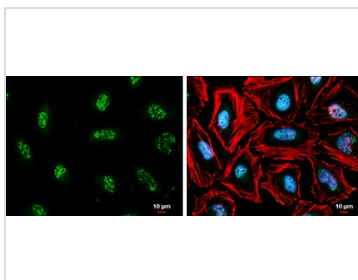
A. 30 µg Jurkat whole cell lysate/extract

B. 30 µg Raji whole cell lysate/extract

C. 30 µg NCI-H929 whole cell lysate/extract

7.5 % SDS-PAGE

cIAP1 antibody [GT422] (GTx629402) dilution: 1:250



GTx629402 ICC/IF Image

cIAP1 antibody [GT422] detects cIAP1 protein at nucleus by immunofluorescent analysis.

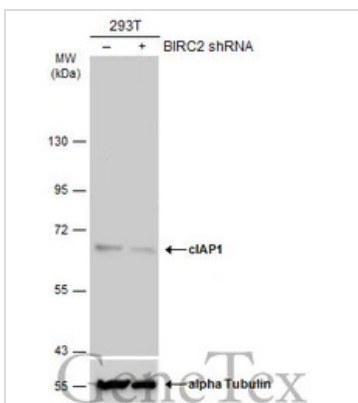
Sample: HeLa cells were fixed in 4% paraformaldehyde at RT for 15 min.

Green: cIAP1 stained by cIAP1 antibody [GT422] (GTx629402) diluted at 1:500.

Red: phalloidin, a cytoskeleton marker, diluted at 1:100.

Blue: Hoechst 33342 staining.

Scale bar= 10µm.



GTx629402 WB Image

Non-transfected (-) and transfected (+) 293T whole cell extracts (50 µg) were separated by 7.5% SDS-PAGE, and the membrane was blotted with cIAP1 antibody [GT422] (GTx629402) diluted at 1:500. The HRP-conjugated anti-mouse IgG antibody (GTx213111-01) was used to detect the primary antibody, and the signal was developed with Trident ECL plus-Enhanced.



For full product information, images and publications, please visit our [website](https://www.genetex.com).