

## HMGB1 antibody [GT349]

Cat. No. GTX629403

|              |                   |
|--------------|-------------------|
| Host         | Mouse             |
| Clonality    | Monoclonal        |
| Isotype      | IgG1              |
| Applications | WB, ICC/IF, IHC-P |
| Reactivity   | Human, Mouse, Rat |

Package  
100 µl, 25 µl

## Applications

## Application Note

\*Optimal dilutions/concentrations should be determined by the researcher.

| Suggested dilution | Recommended dilution |
|--------------------|----------------------|
| WB                 | 1:500-1:3000         |
| ICC/IF             | 1:100-1:1000         |
| IHC-P              | 1:100-1:1000         |

Not tested in other applications.

Calculated MW 25 kDa. ( [Note](#) )

## Properties

|               |  |
|---------------|--|
| Form          | Liquid   |
| Buffer        | PBS  |
| Preservative  | No preservatives   |
| Storage       | Store as concentrated solution. Centrifuge briefly prior to opening vial. For short-term storage (1-2 weeks), store at 4°C. For long-term storage, aliquot and store at -20°C or below. Avoid multiple freeze-thaw cycles. |
| Concentration | 1 mg/ml (Please refer to the vial label for the specific concentration.)   |
| Immunogen     | Recombinant protein encompassing a sequence within the center region of human HMGB1. The exact sequence is proprietary.  |
| Purification  | Affinity purified by Protein G.  |
| Conjugation   | Unconjugated   |

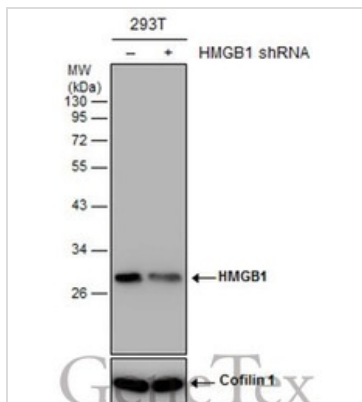
## Note

For laboratory research use only. Not for any clinical, therapeutic, or diagnostic use in humans or animals. Not for animal or human consumption.

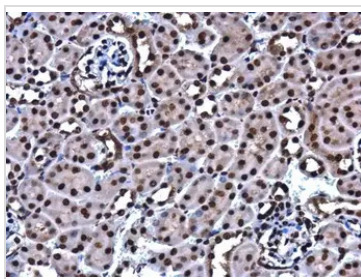
Purchasers shall not, and agree not to enable third parties to, analyze, copy, reverse engineer or otherwise attempt to determine the structure or sequence of the product.



For full product information, images and publications, please visit our [website](#).

**DATA IMAGES**

**GTX629403 WB Image**

Non-transfected (–) and transfected (+) 293T whole cell extracts (30 µg) were separated by 12% SDS-PAGE, and the membrane was blotted with HMGB1 antibody [GT349] (GTX629403) diluted at 1:5000.

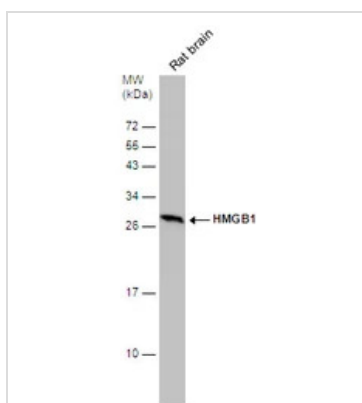

**GTX629403 IHC-P Image**

HMGB1 antibody [GT349] detects HMGB1 protein at cytoplasm and nucleus in mouse kidney by immunohistochemical analysis.

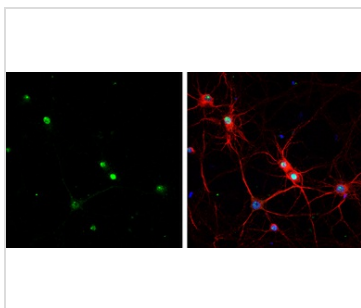
Sample: Paraffin-embedded mouse kidney.

HMGB1 antibody [GT349] (GTX629403) diluted at 1:200.

Antigen Retrieval: Citrate buffer, pH 6.0, 15 min


**GTX629403 WB Image**

Rat tissue extract (50 µg) was separated by 12% SDS-PAGE, and the membrane was blotted with HMGB1 antibody (GTX629403) diluted at 1:1000.


**GTX629403 ICC/IF Image**

HMGB1 antibody [GT349] detects HMGB1 protein at nucleus by immunofluorescent analysis.

Sample: DIV9 rat E18 primary cortical neurons were fixed in 4% paraformaldehyde at RT for 15 min.

Green: HMGB1 protein stained by HMGB1 antibody [GT349] (GTX629403) diluted at 1:200.

Red: MAP2, stained by MAP2 antibody (GTX133109) diluted at 1:500.

Blue: Fluoroshield with DAPI (GTX30920).



For full product information, images and publications, please visit our [website](https://www.genetex.com).