

Lamin A + C antibody [GT9712]

Cat. No. GTX629404

Host	Mouse
Clonality	Monoclonal
Isotype	IgG2b
Application	WB, ICC/IF, IP
Reactivity	Human

Package
100 µl, 25 µl

APPLICATION

Application Note

*Optimal dilutions/concentrations should be determined by the researcher.

Suggested dilution	Recommended dilution
WB	1:500-1:3000
ICC/IF	1:100-1:1000
IP	1:100-1:500

Not tested in other applications.

Calculated MW 65 kDa. ([Note](#))

PROPERTIES

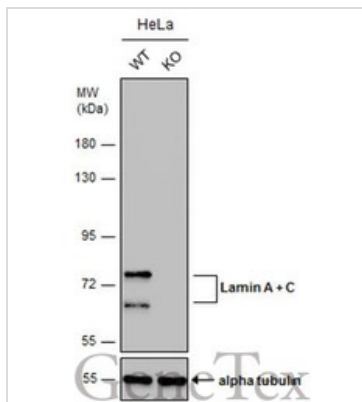
Form	Liquid
Buffer	PBS
Preservative	No preservative
Storage	Store as concentrated solution. Centrifuge briefly prior to opening vial. For short-term storage (1-2 weeks), store at 4°C. For long-term storage, aliquot and store at -20°C or below. Avoid multiple freeze-thaw cycles.
Concentration	1 mg/ml (Please refer to the vial label for the specific concentration.)
Immunogen	Recombinant protein encompassing a sequence within the center region of human Lamin A + C. The exact sequence is proprietary.
Purification	Affinity purified by Protein G.
Conjugation	Unconjugated

Note For laboratory research use only. Not for any clinical, therapeutic, or diagnostic use in humans or animals. Not for animal or human consumption.

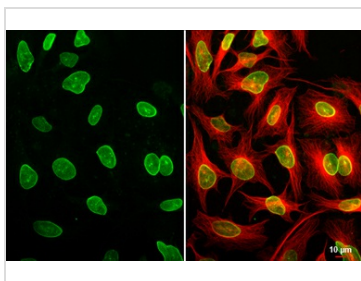
Purchasers shall not, and agree not to enable third parties to, analyze, copy, reverse engineer or otherwise attempt to determine the structure or sequence of the product.



For full product information, images and publications, please visit our [website](#).

DATA IMAGES

GTx629404 WB Image

Wild-type (WT) and Lamin A + C knockout (KO) HeLa cell extracts (30 µg) were separated by 7.5% SDS-PAGE, and the membrane was blotted with Lamin A + C antibody [GT9712] (GTx629404) diluted at 1:500. The HRP-conjugated anti-mouse IgG antibody (GTx213111-01) was used to detect the primary antibody, and the signal was developed with Trident ECL plus-Enhanced.

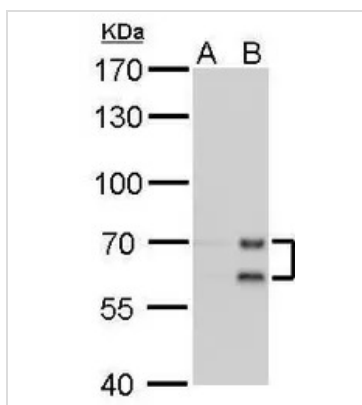

GTx629404 ICC/IF Image

Lamin A + C antibody [GT9712] detects Lamin A + C protein at nuclear envelope by immunofluorescent analysis.

Sample: HeLa cells were fixed in ice-cold MeOH for 5 min.

Green: Lamin A + C stained by Lamin A + C antibody [GT9712] (GTx629404) diluted at 1:500.

Red: beta Tubulin, a cytoskeleton marker, stained by beta Tubulin antibody (GTx101279) diluted at 1:1000.


GTx629404 WB Image

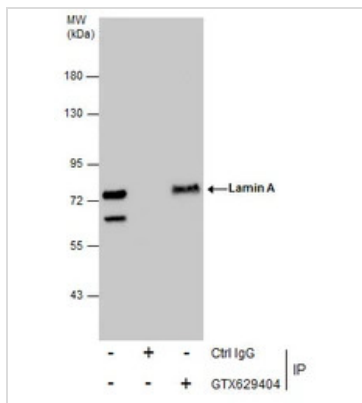
Lamin A + C antibody [GT9712] detects Lamin A + C protein by Western blot analysis.

A. 30 µg HeLa whole cell lysate/extract

B. 30 µg HeLa nuclear lysate/extract

7.5 % SDS-PAGE

Lamin A + C antibody [GT9712] (GTx629404) dilution: 1:1000


GTx629404 IP Image

Immunoprecipitation of Lamin A + C protein from HeLa whole cell extracts using 5 µg of Lamin A + C antibody [GT9712] (GTx629404).

Western blot analysis was performed using Lamin A + C antibody [GT9712] (GTx629404).

EasyBlot anti-Mouse IgG (GTx221667-01) was used as a secondary reagent.



For full product information, images and publications, please visit our [website](https://www.genetex.com).