

CFDP1 antibody [GT9612]

Cat. No. GTX629476

Host	Mouse
Clonality	Monoclonal
Isotype	IgG2b
Application	WB, IHC-P
Reactivity	Human

Package
100 µl, 25 µl

APPLICATION

Application Note

*Optimal dilutions/concentrations should be determined by the researcher.

Suggested dilution	Recommended dilution
WB	1:500-1:3000
IHC-P	1:100-1:1000

Not tested in other applications.

Calculated MW 34 kDa. ([Note](#))

PROPERTIES

Form	Liquid
Buffer	PBS
Preservative	No preservative
Storage	Store as concentrated solution. Centrifuge briefly prior to opening vial. For short-term storage (1-2 weeks), store at 4°C. For long-term storage, aliquot and store at -20°C or below. Avoid multiple freeze-thaw cycles.
Concentration	1 mg/ml (Please refer to the vial label for the specific concentration.)
Immunogen	Recombinant protein encompassing a sequence within the center region of human CFDP1. The exact sequence is proprietary.
Purification	Affinity purified by Protein G.
Conjugation	Unconjugated

Note

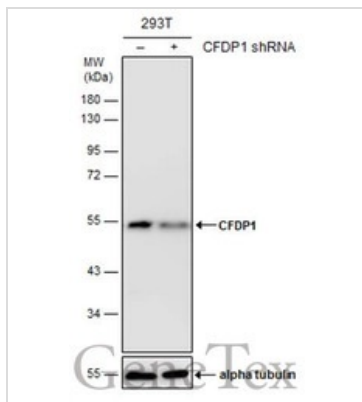
For laboratory research use only. Not for any clinical, therapeutic, or diagnostic use in humans or animals. Not for animal or human consumption.

Purchasers shall not, and agree not to enable third parties to, analyze, copy, reverse engineer or otherwise attempt to determine the structure or sequence of the product.



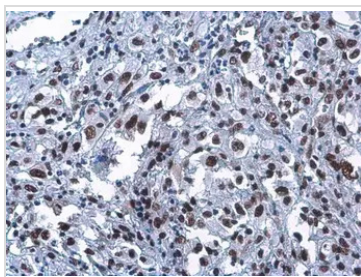
For full product information, images and publications, please visit our [website](#).

DATA IMAGES



GTX629476 WB Image

Non-transfected (–) and transfected (+) 293T whole cell extracts (30 µg) were separated by 10% SDS-PAGE, and the membrane was blotted with CFDP1 antibody [GT9612] (GTX629476) diluted at 1:500.



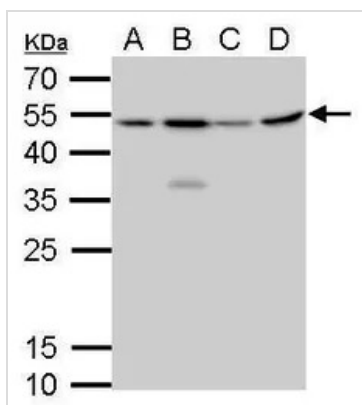
GTX629476 IHC-P Image

CFDP1 antibody [GT9612] detects CFDP1 protein at nucleus by immunohistochemical analysis.

Sample: Paraffin-embedded human ovarian cancer.

CFDP1 stained by CFDP1 antibody [GT9612] (GTX629476) diluted at 1:100.

Antigen Retrieval: Citrate buffer, pH 6.0, 15 min



GTX629476 WB Image

CFDP1 antibody [GT9612] detects 0 protein by Western blot analysis.

A. 30 µg U87-MG whole cell lysate/extract

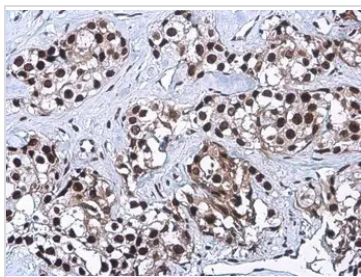
B. 30 µg SK-N-SH whole cell lysate/extract

C. 30 µg IMR32 whole cell lysate/extract

D. 30 µg SK-N-AS whole cell lysate/extract

12 % SDS-PAGE

CFDP1 antibody [GT9612] (GTX629476) dilution: 1:1000



GTX629476 IHC-P Image

CFDP1 antibody [GT9612] detects CFDP1 protein at nucleus by immunohistochemical analysis.

Sample: Paraffin-embedded human breast carcinoma.

CFDP1 stained by CFDP1 antibody [GT9612] (GTX629476) diluted at 1:100.

Antigen Retrieval: Citrate buffer, pH 6.0, 15 min



For full product information, images and publications, please visit our [website](https://www.genetex.com).