

Dengue virus NS3 protein antibody [GT2811]

Cat. No. GTX629477

Host	Mouse
Clonality	Monoclonal
Isotype	IgG1
Applications	WB, ICC/IF, ELISA
Reactivity	Dengue virus 1, Dengue virus 2, Dengue virus 3, Dengue virus 4

References (29)

★★★★★ Review (3)

Package

100 µl, 25 µl

Applications

Application Note

*Optimal dilutions/concentrations should be determined by the researcher.

Suggested dilution	Recommended dilution
WB	1:1000-1:10000
ICC/IF	1:100-1:2000
ELISA	Assay dependent

Not tested in other applications.

Calculated MW 69 kDa. ([Note](#))

Product Note

This antibody is specific for Dengue virus 1/2/3/4 NS3 protein (**with weaker reactivity toward serotypes 1 and 3**), and it does not cross-react with JEV NS3 protein.

Properties

Form	Liquid
Buffer	PBS, 20% Glycerol
Preservative	No preservatives
Storage	Store as concentrated solution. Centrifuge briefly prior to opening vial. For short-term storage (1-2 weeks), store at 4°C. For long-term storage, aliquot and store at -20°C or below. Avoid multiple freeze-thaw cycles.
Concentration	1 mg/ml (Please refer to the vial label for the specific concentration.)
Immunogen	Carrier-protein conjugated synthetic peptide encompassing a sequence within the C-terminus region of Dengue virus NS3 protein (Dengue virus 2 (strain 16681 PDK 53)). The exact sequence is proprietary.
Purification	Affinity purified by Protein G.
Conjugation	Unconjugated



For full product information, images and publications, please visit our [website](#).

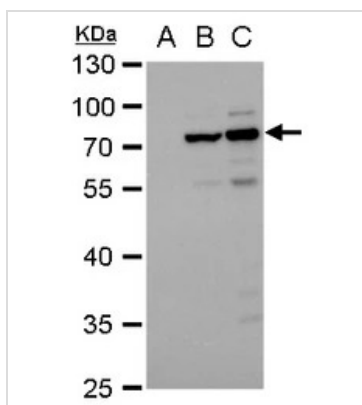
Date 2026 / 06 / 28 Page 1 of 2

For laboratory research use only. Not for any clinical, therapeutic, or diagnostic use in humans or animals. Not for animal or human consumption.

Note

Purchasers shall not, and agree not to enable third parties to, analyze, copy, reverse engineer or otherwise attempt to determine the structure or sequence of the product.

DATA IMAGES



GTX629477 WB Image

NS3 (Dengue virus) antibody [GT2811] detects NS3 (Dengue virus) protein by western blot analysis.

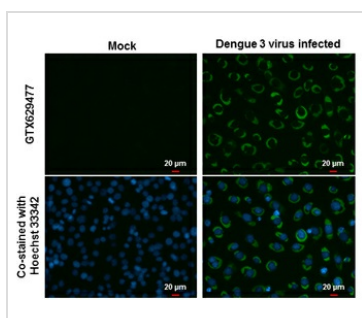
- A. 66 µg BHK-21 whole cell extract
 - B. 20 µg whole cell extract of Dengue virus type 2 infected BHK-21 cells
 - C. 10 µg whole cell extract of Dengue virus type 3 infected BHK-21 cells
- 10% SDS-PAGE

NS3 (Dengue virus) antibody [GT2811] (GTX629477) dilution: 1:5000

The HRP-conjugated anti-mouse IgG antibody (GTX213111-01) was used to detect the primary antibody.

The results may vary from different DENV strains, viral infection status, and culture conditions.

Reference: [Proc Natl Acad Sci U S A. 2013 Apr 23;110\(17\):6795-9](#), [J Infect Dis. 2011 Jun 15;203\(12\):1775-83](#).

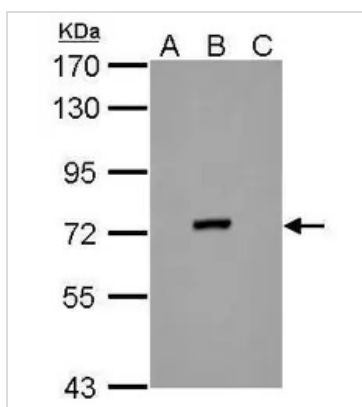


GTX629477 ICC/IF Image

NS3 (Dengue virus) antibody [GT2811] detects NS3 (Dengue virus) protein at cytoplasm by immunofluorescent analysis.

Samples: BHK-21 cells mock (left) and infected with Dengue virus 3 (right) were fixed in paraformaldehyde. Green: NS3 (Dengue virus) protein stained by NS3 (Dengue virus) antibody [GT2811] (GTX629477) diluted at 1:2000.

Blue: Hoechst 33342 staining.



GTX629477 WB Image

NS3 (Dengue Virus 2) antibody [GT2811] detects NS3 protein by western blot analysis.

- A. 30 µg BHK21 whole cell lysate/extract
 - B. 30 µg whole cell lysate/extract of Dengue virus 2 infected BHK21 cells
 - C. 30 µg whole cell lysate/extract of Japanese encephalitis virus infected BHK21 cells
- 7.5% SDS-PAGE

NS3 (Dengue Virus 2) antibody [GT2811] (GTX629477) dilution: 1:5000

The HRP-conjugated anti-mouse IgG antibody (GTX213111-01) was used to detect the primary antibody.



For full product information, images and publications, please visit our [website](#).