

ENY2 antibody [GT245]

Cat. No. GTX629542

Host	Mouse
Clonality	Monoclonal
Isotype	IgG1
Applications	WB, ICC/IF, IHC-P
Reactivity	Human, Rat

References (1)

Package

100 µl, 25 µl

Applications

Application Note

*Optimal dilutions/concentrations should be determined by the researcher.

Suggested dilution	Recommended dilution
WB	1:500-1:3000
ICC/IF	1:100-1:1000
IHC-P	1:100-1:1000

Not tested in other applications.

Calculated MW 12 kDa. ([Note](#))

Properties

Form	Liquid
Buffer	PBS
Preservative	No preservatives
Storage	Store as concentrated solution. Centrifuge briefly prior to opening vial. For short-term storage (1-2 weeks), store at 4°C. For long-term storage, aliquot and store at -20°C or below. Avoid multiple freeze-thaw cycles.
Concentration	1 mg/ml (Please refer to the vial label for the specific concentration.)
Immunogen	Recombinant protein encompassing a sequence within the center region of human ENY2. The exact sequence is proprietary.
Purification	Affinity purified by Protein G.
Conjugation	Unconjugated

Note

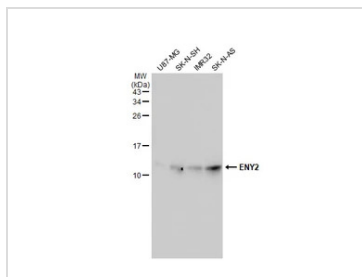
For laboratory research use only. Not for any clinical, therapeutic, or diagnostic use in humans or animals. Not for animal or human consumption.

Purchasers shall not, and agree not to enable third parties to, analyze, copy, reverse engineer or otherwise attempt to determine the structure or sequence of the product.



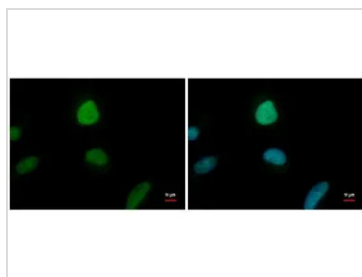
For full product information, images and publications, please visit our [website](#).

DATA IMAGES



GTX629542 WB Image

Various whole cell extracts (30 µg) were separated by 15% SDS-PAGE, and the membrane was blotted with ENY2 antibody [GT245] (GTX629542) diluted at 1:1000. The HRP-conjugated anti-mouse IgG antibody (GTX213111-01) was used to detect the primary antibody, and the signal was developed with Trident ECL plus-Enhanced.



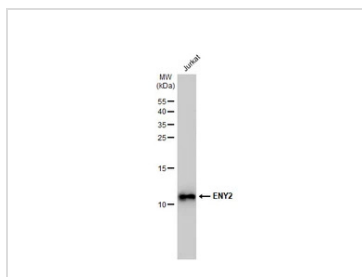
GTX629542 ICC/IF Image

ENY2 antibody detects ENY2 protein at Nucleus by immunofluorescent analysis.

Sample: HeLa cells were fixed in 4% paraformaldehyde/PBS for 15 min.

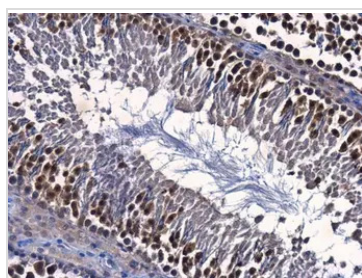
Green: ENY2 protein stained by ENY2 antibody (GTX629542) diluted at 1:500.

Blue: Hoechst 33342 staining.



GTX629542 WB Image

Whole cell extract (30 µg) was separated by 15% SDS-PAGE, and the membrane was blotted with ENY2 antibody [GT245] (GTX629542) diluted at 1:1000. The HRP-conjugated anti-mouse IgG antibody (GTX213111-01) was used to detect the primary antibody.



GTX629542 IHC-P Image

ENY2 antibody [GT245] detects ENY2 protein at nucleus in rat testis by immunohistochemical analysis.

Sample: Paraffin-embedded rat testis.

ENY2 antibody [GT245] (GTX629542) diluted at 1:250.

Antigen Retrieval: Citrate buffer, pH 6.0, 15 min



For full product information, images and publications, please visit our [website](https://www.genetex.com).