

p21 Cip1 antibody [GT1032]

Cat. No. GTX629543

Host	Mouse
Clonality	Monoclonal
Isotype	IgG2a
Applications	WB, ICC/IF, IHC-P, FCM, IP
Reactivity	Human, Mouse

References (24)

★★★★☆ Review (5)

Package

100 µl, 25 µl

PRODUCT

Summary

p21 (Cip1) antibody recognizes p21^{Cip1} protein, a cyclin-dependent kinase inhibitor with a predicted molecular weight of 18 kDa. p21 is a major downstream regulator of p53 activity in response to DNA damage to control cell cycle arrest. p21 also interacts with proliferating cell nuclear antigen (PCNA) to inhibit PCNA-dependent S-phase DNA synthesis.

Applications

Application Note

*Optimal dilutions/concentrations should be determined by the researcher.

Suggested dilution	Recommended dilution
WB	1:500-1:3000
ICC/IF	1:100-1:1000
IHC-P	Assay dependent
FCM	Assay dependent
IP	1:100-1:500

Not tested in other applications.

Observed MW (kDa) 21 kDa.

Properties

Form	Liquid
Buffer	PBS
Preservative	No preservatives
Storage	Store as concentrated solution. Centrifuge briefly prior to opening vial. For short-term storage (1-2 weeks), store at 4°C. For long-term storage, aliquot and store at -20°C or below. Avoid multiple freeze-thaw cycles.
Concentration	0.8 mg/ml (Please refer to the vial label for the specific concentration.)
Immunogen	Recombinant protein encompassing a sequence within the center region of human p21 Cip1. The exact sequence is proprietary.



For full product information, images and publications, please visit our [website](#).

Date 2026 / 01 / 11 Page 1 of 2

Purification Affinity purified by Protein A.

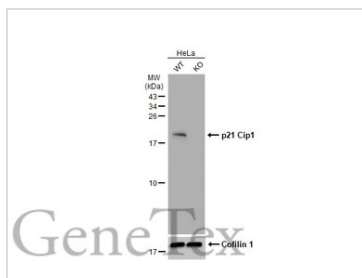
Conjugation Unconjugated

For laboratory research use only. Not for any clinical, therapeutic, or diagnostic use in humans or animals. Not for animal or human consumption.

Note

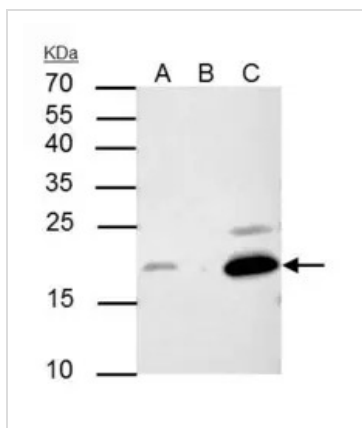
Purchasers shall not, and agree not to enable third parties to, analyze, copy, reverse engineer or otherwise attempt to determine the structure or sequence of the product.

DATA IMAGES



GTX629543 WB Image

Wild-type (WT) and p21 Cip1 knockout (KO) HeLa cell extracts (30 µg) were separated by 15% SDS-PAGE, and the membrane was blotted with p21 Cip1 antibody [GT1032] (GTX629543) diluted at 1:1000. The HRP-conjugated anti-mouse IgG antibody (GTX213111-01) was used to detect the primary antibody, and the signal was developed with Trident ECL plus-Enhanced.



GTX629543 IP Image

p21 Cip1 antibody [GT1032] immunoprecipitates CDKN1A protein in IP experiments.

IP samples: HCT-116 whole cell extract treat with 30uM cisplatin for 48 hr

A. 30 µg HCT-116 whole cell extract treat with 30uM cisplatin for 48 hr

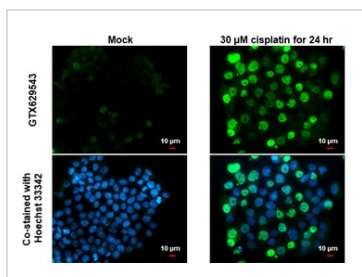
B. Control with 4 µg of preimmune Mouse IgG

C. Immunoprecipitation of CDKN1A protein by 4 µg p21 Cip1 antibody [GT1032] (GTX629543)

15 % SDS-PAGE

The immunoprecipitated CDKN1A protein was detected by p21 Cip1 antibody [GT1032] (GTX629543) diluted at 1:1000.

[EasyBlot anti-mouse IgG (GTX221667-01) was used as a secondary reagent]



GTX629543 ICC/IF Image

p21 Cip1 antibody [GT1032] detects p21 Cip1 protein at nucleus by immunofluorescent analysis.

Sample: Mock and treated HCT116 cells were fixed in 4% paraformaldehyde at RT for 15 min.

Green: p21 Cip1 stained by p21 Cip1 antibody [GT1032] (GTX629543) diluted at 1:500.

Blue: Hoechst 33342 staining.

Scale bar= 10 µm.



For full product information, images and publications, please visit our [website](https://www.genetex.com).