

## p21 Cip1 antibody [GT8611]

**Cat. No. GTX629627**

<b>Host</b>	Mouse
<b>Clonality</b>	Monoclonal
<b>Isotype</b>	IgG2b
<b>Application</b>	WB, ICC/IF, FACS
<b>Reactivity</b>	Human

Reference ( 1 )  
 Package  
 100 µl, 25 µl

### APPLICATION

#### Application Note

\*Optimal dilutions/concentrations should be determined by the researcher.

Suggested dilution	Recommended dilution
WB	1:500-1:3000
ICC/IF	1:100-1:1000
FACS	Assay dependent

Not tested in other applications.

**Calculated MW** 18 kDa. ( [Note](#) )

### PROPERTIES

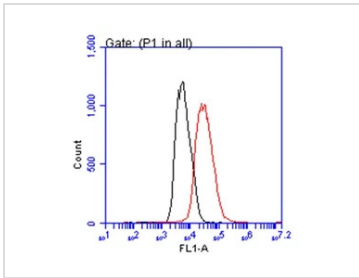
<b>Form</b>	Liquid
<b>Buffer</b>	PBS
<b>Preservative</b>	No preservative
<b>Storage</b>	Store as concentrated solution. Centrifuge briefly prior to opening vial. For short-term storage (1-2 weeks), store at 4°C. For long-term storage, aliquot and store at -20°C or below. Avoid multiple freeze-thaw cycles.
<b>Concentration</b>	1 mg/ml (Please refer to the vial label for the specific concentration.)
<b>Immunogen</b>	Recombinant protein encompassing a sequence within the center region of human p21 Cip1. The exact sequence is proprietary.
<b>Purification</b>	Affinity purified by Protein G.
<b>Conjugation</b>	Unconjugated

**Note** For laboratory research use only. Not for any clinical, therapeutic, or diagnostic use in humans or animals. Not for animal or human consumption.

Purchasers shall not, and agree not to enable third parties to, analyze, copy, reverse engineer or otherwise attempt to determine the structure or sequence of the product.



For full product information, images and publications, please visit our [website](#).

**DATA IMAGES**

**GTX629627 FACS Image**

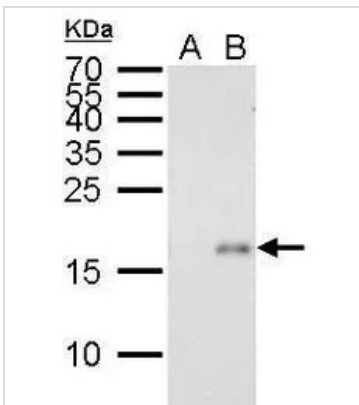
p21 Cip1 antibody [GT8611] (GTX629627) detects p21 Cip1 by flow cytometry analysis.

Sample: HepG2 cell.

Black: Unlabelled sample was used as a control.

Red: p21 Cip1 antibody [GT8611] (GTX629627) dilution: 1:50.

Acquisition of 20,000 events were collected for FACS analysis.


**GTX629627 WB Image**

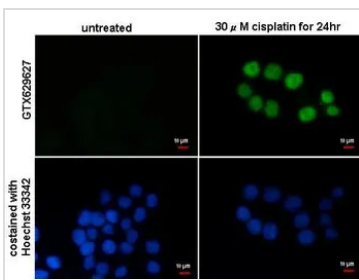
p21 Cip1 antibody [GT8611] detects p21 Cip1 protein by Western blot analysis.

A. 30 µg HCT116 whole cell lysate/extract (untreated)

B. 30 µg HCT116 whole cell lysate/extract (30 µM Cisplatin treatment for 24 hr)

15 % SDS-PAGE

p21 Cip1 antibody [GT8611] (GTX629627) dilution: 1:1000

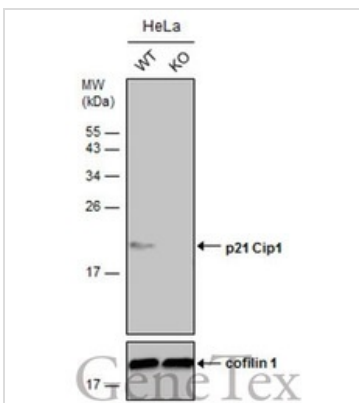

**GTX629627 ICC/IF Image**

p21 Cip1 antibody [GT8611] detects p21 Cip1 protein at nucleus by immunofluorescent analysis.

Sample: HCT116 cells treated with 30µM cisplatin for 24hr and were fixed in 4% paraformaldehyde at RT for 15 min.

Green: p21 Cip1 protein stained by p21 Cip1 antibody [GT8611] (GTX629627) diluted at 1:500.

Blue: Hoechst 33342 staining.


**GTX629627 WB Image**

Wild-type (WT) and p21 Cip1 knockout (KO) HeLa cell extracts (30 µg) were separated by 15% SDS-PAGE, and the membrane was blotted with p21 Cip1 antibody [GT8611] (GTX629627) diluted at 1:500. The HRP-conjugated anti-mouse IgG antibody (GTX213111-01) was used to detect the primary antibody, and the signal was developed with Trident ECL plus-Enhanced.



For full product information, images and publications, please visit our [website](https://www.genetex.com).