

beta Actin antibody [GT5512]

Cat. No. GTX629630

Host	Mouse
Clonality	Monoclonal
Isotype	IgG1
Applications	WB, ICC/IF, IHC-P, IP
Reactivity	Human, Mouse, Rat, Zebrafish, Yeast, Rabbit, Goat, Drosophila, Cat, Dog, Monkey, Xenopus

References (224)

★★★★☆ Review (9)

Package

100 µl, 25 µl

Applications

Application Note

*Optimal dilutions/concentrations should be determined by the researcher.

Suggested dilution	Recommended dilution
WB	1:500-1:20000
ICC/IF	1:100-1:1000
IHC-P	1:100-1:1000
IP	Assay dependent

Not tested in other applications.

Observed MW (kDa) 45 kDa.**Product Note** IP/MS validation is based on published data (PMID: 30377426).

Properties

Form	Liquid
Buffer	PBS, 20% Glycerol
Preservative	No preservatives
Storage	Store as concentrated solution. Centrifuge briefly prior to opening vial. For short-term storage (1-2 weeks), store at 4°C. For long-term storage, aliquot and store at -20°C or below. Avoid multiple freeze-thaw cycles.
Concentration	1 mg/ml (Please refer to the vial label for the specific concentration.)
Immunogen	Carrier-protein conjugated synthetic peptide encompassing a sequence within the C-terminus region of human beta Actin. The exact sequence is proprietary.
Purification	Affinity purified by Protein G.
Conjugation	Unconjugated

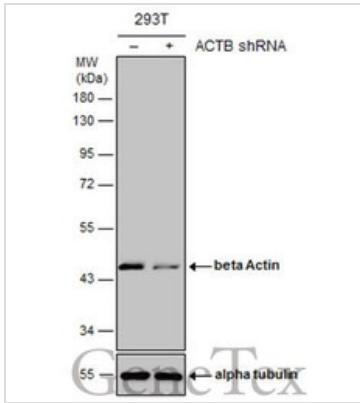


For full product information, images and publications, please visit our [website](#).

For laboratory research use only. Not for any clinical, therapeutic, or diagnostic use in humans or animals. Not for animal or human consumption.

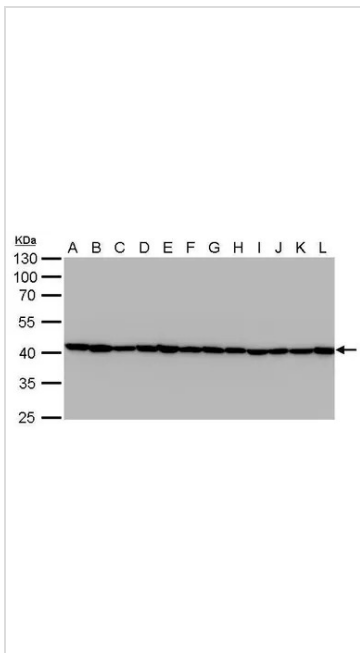
Note
Purchasers shall not, and agree not to enable third parties to, analyze, copy, reverse engineer or otherwise attempt to determine the structure or sequence of the product.

DATA IMAGES



GTX629630 WB Image

Non-transfected (-) and transfected (+) 293T whole cell extracts (10 µg) were separated by 10% SDS-PAGE, and the membrane was blotted with beta Actin antibody [GT5512] (GTX629630) diluted at 1:20000. The HRP-conjugated anti-mouse IgG antibody (GTX213111-01) was used to detect the primary antibody.



GTX629630 WB Image

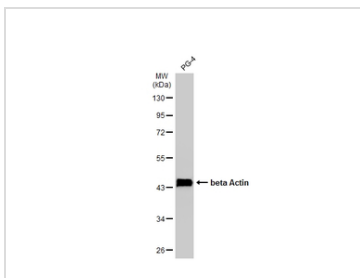
Beta Actin antibody [GT5512] detects beta Actin protein by western blot analysis.

- A. 30 µg Jurkat whole cell lysate/extract
- B. 30 µg Raji whole cell lysate/extract
- C. 30 µg 293T whole cell lysate/extract
- D. 30 µg A431 whole cell lysate/extract
- E. 30 µg HeLa whole cell lysate/extract
- F. 30 µg HepG2 whole cell lysate/extract
- G. 30 µg H1299 whole cell lysate/extract
- H. 30 µg HCT116 whole cell lysate/extract
- I. 30 µg MCF-7 whole cell lysate/extract
- J. 30 µg NT2D1 whole cell lysate/extract
- K. 30 µg PC-3 whole cell lysate/extract
- L. 30 µg U87-MG whole cell lysate/extract

10% SDS-PAGE

Beta Actin antibody [GT5512] (GTX629630) dilution: 1:20000

The HRP-conjugated anti-mouse IgG antibody (GTX213111-01) was used to detect the primary antibody.



GTX629630 WB Image

Whole cell extract (30 µg) was separated by 10% SDS-PAGE, and the membrane was blotted with beta Actin antibody (GTX629630) diluted at 1:20000. The HRP-conjugated anti-mouse IgG antibody (GTX213111-01) was used to detect the primary antibody.



For full product information, images and publications, please visit our [website](#).