

## E-Cadherin antibody [GT477]

Cat. No. GTX629691

Host	Mouse
Clonality	Monoclonal
Isotype	IgG2a
Applications	WB, ICC/IF, IHC-P, FCM, IP
Reactivity	Human, Mouse, Rat, Dog

References ( 5 )

★★★★★ Review ( 2 )

Package

100 µl, 25 µl

## Applications

## Application Note

\*Optimal dilutions/concentrations should be determined by the researcher.

Suggested dilution	Recommended dilution
WB	1:500-1:3000
ICC/IF	1:100-1:1000
IHC-P	1:100-1:1000
FCM	1:50-1:200
IP	1:100-1:500

Not tested in other applications.

Calculated MW 97 kDa. ( [Note](#) )

## Properties

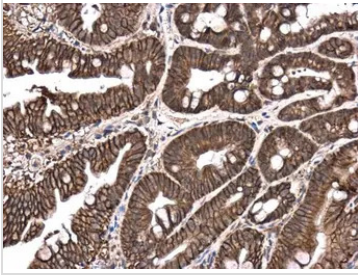
Form	Liquid
Buffer	PBS, 20% Glycerol
Preservative	No Preservative
Storage	Store as concentrated solution. Centrifuge briefly prior to opening vial. For short-term storage (1-2 weeks), store at 4°C. For long-term storage, aliquot and store at -20°C or below. Avoid multiple freeze-thaw cycles.
Concentration	1 mg/ml (Please refer to the vial label for the specific concentration.)
Immunogen	Recombinant protein encompassing a sequence within the center region of human E-Cadherin. The exact sequence is proprietary.
Purification	Affinity purified by Protein G.
Conjugation	Unconjugated

For full product information, images and publications, please visit our [website](#).

For laboratory research use only. Not for any clinical, therapeutic, or diagnostic use in humans or animals. Not for animal or human consumption.

**Note**

Purchasers shall not, and agree not to enable third parties to, analyze, copy, reverse engineer or otherwise attempt to determine the structure or sequence of the product.

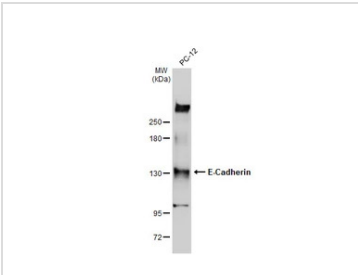
**DATA IMAGES**

**GTx629691 IHC-P Image**

E-Cadherin antibody [GT477] detects E-Cadherin protein at cell membrane and cytoplasm in mouse intestine by immunohistochemical analysis.

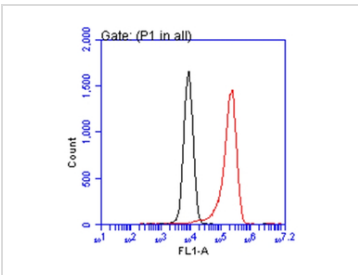
Sample: Paraffin-embedded mouse intestine.

E-Cadherin antibody [GT477] (GTx629691) diluted at 1:250.

Antigen Retrieval: Citrate buffer, pH 6.0, 15 min


**GTx629691 WB Image**

Whole cell extract (30 µg) was separated by 5% SDS-PAGE, and the membrane was blotted with E-Cadherin antibody [GT477] (GTx629691) diluted at 1:500. The HRP-conjugated anti-mouse IgG antibody (GTx213111-01) was used to detect the primary antibody.


**GTx629691 FCM Image**

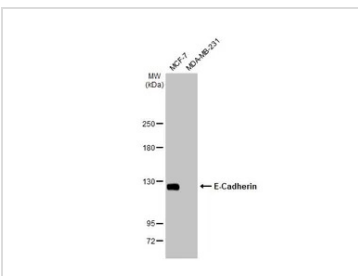
E-Cadherin antibody [GT477] (GTx629691) detects E-Cadherin protein by flow cytometry analysis.

Sample: MCF-7 cell.

Black: Unlabelled sample was used as a control.

Red: E-Cadherin antibody [GT477] (GTx629691) dilution: 1:50.

Acquisition of 20,000 events were collected for FACS analysis.


**GTx629691 WB Image**

Various whole cell extracts (30 µg) were separated by 5% SDS-PAGE, and the membrane was blotted with E-Cadherin antibody [GT477] (GTx629691) diluted at 1:3000. The HRP-conjugated anti-mouse IgG antibody (GTx213111-01) was used to detect the primary antibody.



For full product information, images and publications, please visit our [website](https://www.genetex.com).