

## E-Cadherin antibody [GT311]

Cat. No. GTX629692

Host	Mouse
Clonality	Monoclonal
Isotype	IgG1
Applications	WB, FCM, IP
Reactivity	Human

Package  
100 µl, 25 µl

## Applications

## Application Note

\*Optimal dilutions/concentrations should be determined by the researcher.

Suggested dilution	Recommended dilution
WB	1:500-1:3000
FCM	1:50-1:200
IP	1:100-1:500

Not tested in other applications.

Calculated MW 97 kDa. ( [Note](#) )

## Properties

Form	Liquid
Buffer	PBS
Preservative	No preservative
Storage	Store as concentrated solution. Centrifuge briefly prior to opening vial. For short-term storage (1-2 weeks), store at 4°C. For long-term storage, aliquot and store at -20°C or below. Avoid multiple freeze-thaw cycles.
Concentration	1 mg/ml (Please refer to the vial label for the specific concentration.)
Immunogen	Recombinant protein encompassing a sequence within the center region of human E-Cadherin. The exact sequence is proprietary.
Purification	Affinity purified by Protein G.
Conjugation	Unconjugated

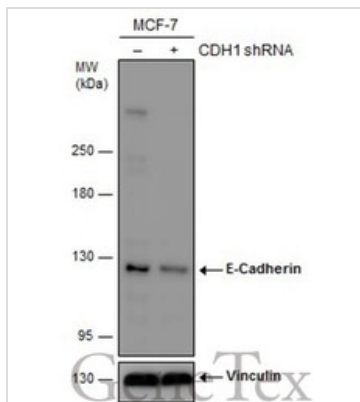
## Note

For laboratory research use only. Not for any clinical, therapeutic, or diagnostic use in humans or animals. Not for animal or human consumption.

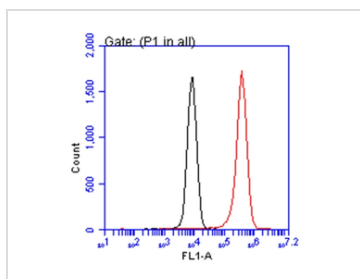
Purchasers shall not, and agree not to enable third parties to, analyze, copy, reverse engineer or otherwise attempt to determine the structure or sequence of the product.



For full product information, images and publications, please visit our [website](#).

**DATA IMAGES**

**GTX629692 WB Image**

Non-transfected (–) and transfected (+) MCF-7 whole cell extracts (30 µg) were separated by 5% SDS-PAGE, and the membrane was blotted with E-Cadherin antibody [GT311] (GTX629692) diluted at 1:2000. The HRP-conjugated anti-mouse IgG antibody (GTX213111-01) was used to detect the primary antibody.


**GTX629692 FCM Image**

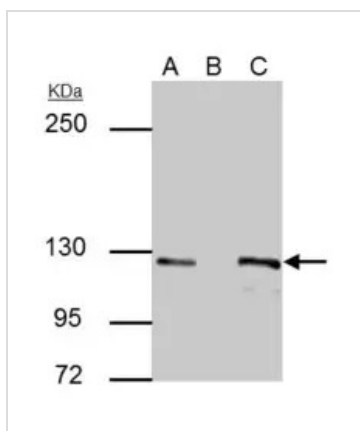
E-Cadherin antibody [GT311] (GTX629692) detects E-Cadherin protein by flow cytometry analysis.

Sample: MCF-7 cell.

Black: Unlabelled sample was used as a control.

Red: E-Cadherin antibody [GT311] (GTX629692) dilution: 1:50.

Acquisition of 20,000 events were collected for FACS analysis.


**GTX629692 IP Image**

E-cadherin antibody [GT311] immunoprecipitates E-cadherin protein in IP experiments.

IP samples: MCF-7 whole cell extract

A. 30 µg MCF-7 cell whole cell extract

B. Control with 3 µg of preimmune Mouse IgG

C. Immunoprecipitation of E-cadherin protein by 3 µg E-cadherin antibody [GT311] (GTX629692)

5 % SDS-PAGE

The immunoprecipitated E-cadherin protein was detected by E-cadherin antibody [GT311] (GTX629692) diluted at 1:500.

[EasyBlot anti-mouse IgG (GTX221667-01) was used as a secondary reagent]



For full product information, images and publications, please visit our [website](https://www.genetex.com).