

E-Cadherin antibody [GT358]

Cat. No. GTX629694

Host	Mouse
Clonality	Monoclonal
Isotype	IgG2b
Applications	WB, ICC/IF, FCM
Reactivity	Human, Dog

References (1)

Package

100 µl, 25 µl

Applications

Application Note

*Optimal dilutions/concentrations should be determined by the researcher.

Suggested dilution	Recommended dilution
WB	1:500-1:3000
ICC/IF	1:100-1:1000
FCM	1:50-1:200

Not tested in other applications.

Calculated MW 97 kDa. ([Note](#))

Properties

Form	Liquid
Buffer	PBS
Preservative	No preservative
Storage	Store as concentrated solution. Centrifuge briefly prior to opening vial. For short-term storage (1-2 weeks), store at 4°C. For long-term storage, aliquot and store at -20°C or below. Avoid multiple freeze-thaw cycles.
Concentration	1 mg/ml (Please refer to the vial label for the specific concentration.)
Immunogen	Recombinant protein encompassing a sequence within the center region of human E-Cadherin. The exact sequence is proprietary.
Purification	Affinity purified by Protein G.
Conjugation	Unconjugated

Note

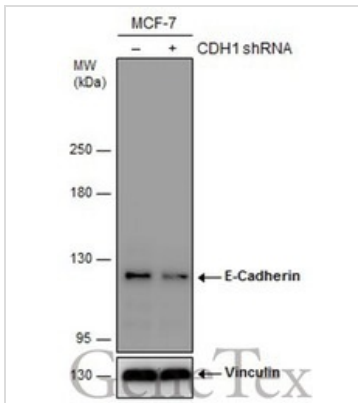
For laboratory research use only. Not for any clinical, therapeutic, or diagnostic use in humans or animals. Not for animal or human consumption.

Purchasers shall not, and agree not to enable third parties to, analyze, copy, reverse engineer or otherwise attempt to determine the structure or sequence of the product.



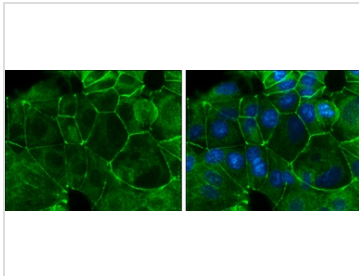
For full product information, images and publications, please visit our [website](#).

DATA IMAGES



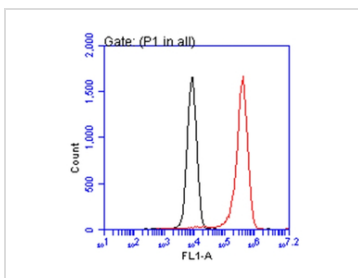
GTX629694 WB Image

Non-transfected (-) and transfected (+) MCF-7 whole cell extracts (30 µg) were separated by 5% SDS-PAGE, and the membrane was blotted with E-Cadherin antibody [GT358] (GTX629694) diluted at 1:500. The HRP-conjugated anti-mouse IgG antibody (GTX213111-01) was used to detect the primary antibody.



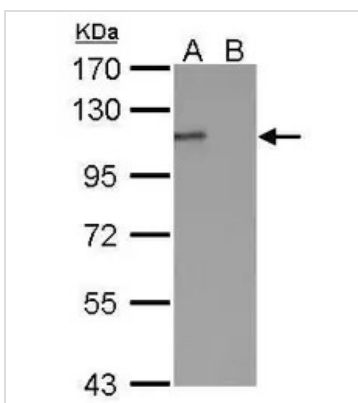
GTX629694 ICC/IF Image

E-Cadherin antibody [GT358] detects E-Cadherin protein at cell membrane by immunofluorescent analysis. Sample: MCF7 cells were fixed in ice-cold MeOH for 5 min. Green: E-Cadherin protein stained by E-Cadherin antibody [GT358] (GTX629694) diluted at 1:500. Blue: Hoechst 33342 staining.



GTX629694 FCM Image

E-Cadherin antibody [GT358] (GTX629694) detects E-Cadherin protein by flow cytometry analysis. Sample: MCF-7 cell. Black: Unlabelled sample was used as a control. Red: E-Cadherin antibody [GT358] (GTX629694) dilution: 1:50. Acquisition of 20,000 events were collected for FACS analysis.



GTX629694 WB Image

E-cadherin antibody [GT358] detects E-cadherin protein by Western blot analysis. A. 30 µg MCF-7 whole cell lysate/extract B. 30 µg MDA-MB-231 whole cell lysate/extract 7.5 % SDS-PAGE E-cadherin antibody [GT358] (GTX629694) dilution: 1:1000



For full product information, images and publications, please visit our [website](http://www.genetex.com).