

ATRX antibody [GT4212]

Cat. No. GTX629703

Host	Mouse
Clonality	Monoclonal
Isotype	IgG1
Application	WB, ICC/IF
Reactivity	Human, Mouse

Reference (1)
 Package
 100 µl, 25 µl

APPLICATION

Application Note

*Optimal dilutions/concentrations should be determined by the researcher.

Suggested dilution	Recommended dilution
WB	1:500-1:3000
ICC/IF	1:100-1:1000

Not tested in other applications.

Calculated MW 283 kDa. ([Note](#))

PROPERTIES

Form	Liquid
Buffer	PBS
Preservative	No preservative
Storage	Store as concentrated solution. Centrifuge briefly prior to opening vial. For short-term storage (1-2 weeks), store at 4°C. For long-term storage, aliquot and store at -20°C or below. Avoid multiple freeze-thaw cycles.
Concentration	1 mg/ml (Please refer to the vial label for the specific concentration.)
Immunogen	Recombinant protein encompassing a sequence within the C-terminus region of human ATRX. The exact sequence is proprietary.
Purification	Affinity purified by Protein G.
Conjugation	Unconjugated

Note

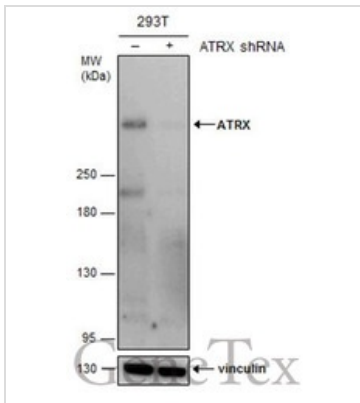
For laboratory research use only. Not for any clinical, therapeutic, or diagnostic use in humans or animals. Not for animal or human consumption.

Purchasers shall not, and agree not to enable third parties to, analyze, copy, reverse engineer or otherwise attempt to determine the structure or sequence of the product.



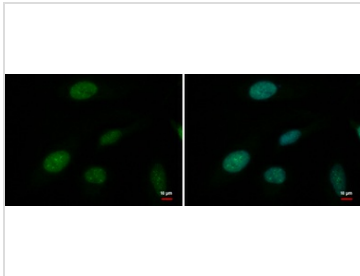
For full product information, images and publications, please visit our [website](#).

DATA IMAGES



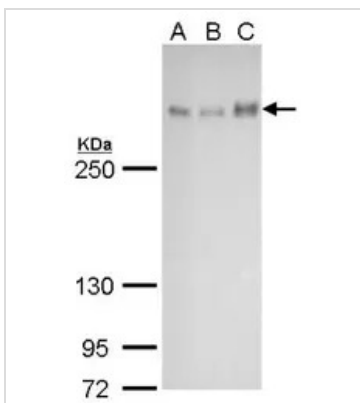
GTX629703 WB Image

Non-transfected (–) and transfected (+) 293T whole cell extracts (30 µg) were separated by 5% SDS-PAGE, and the membrane was blotted with ATRX antibody [GT4212] (GTX629703) diluted at 1:500.



GTX629703 ICC/IF Image

ATR antibody [GT4212] detects ATRX protein at nucleus by immunofluorescent analysis. Sample: HeLa cells were fixed in 4% paraformaldehyde at RT for 15 min. Green: ATRX protein stained by ATRX antibody [GT4212] (GTX629703) diluted at 1:500. Blue: Hoechst 33342 staining.



GTX629703 WB Image

ATR antibody [GT4212] detects ATRX protein by Western blot analysis.

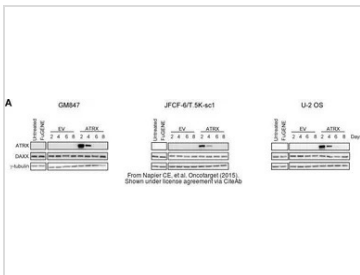
A. 30 µg Neuro2A whole cell lysate/extract

B. 30 µg C8D30 whole cell lysate/extract

C. 30 µg BCL-1 whole cell lysate/extract

5 % SDS-PAGE

ATR antibody [GT4212] (GTX629703) dilution: 1:500



GTX629703 WB Image

The data was published in the journal Oncotarget in 2015. [PMID: 26001292](https://pubmed.ncbi.nlm.nih.gov/26001292/)



For full product information, images and publications, please visit our [website](https://www.genetex.com).