

gamma Tubulin antibody [GT4511]

Cat. No. GTX629704

Host	Mouse
Clonality	Monoclonal
Isotype	IgG2b
Applications	WB, ICC/IF, IHC
Reactivity	Human, Mouse, Rat, Drosophila

References (4)

★★★★☆ Review (1)

Package

100 µl, 25 µl

Applications

Application Note

*Optimal dilutions/concentrations should be determined by the researcher.

Suggested dilution	Recommended dilution
WB	1:500-1:3000
ICC/IF	1:100-1:1000
IHC	Assay dependent

Not tested in other applications.

Calculated MW 51 kDa. ([Note](#))

Properties

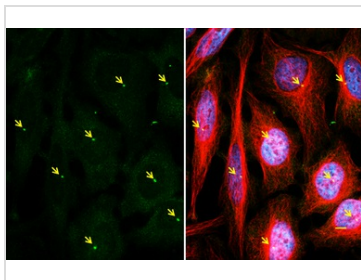
Form	Liquid
Buffer	PBS
Preservative	No preservatives
Storage	Store as concentrated solution. Centrifuge briefly prior to opening vial. For short-term storage (1-2 weeks), store at 4°C. For long-term storage, aliquot and store at -20°C or below. Avoid multiple freeze-thaw cycles.
Concentration	1 mg/ml (Please refer to the vial label for the specific concentration.)
Immunogen	Recombinant protein encompassing a sequence within the center region of human gamma Tubulin. The exact sequence is proprietary.
Purification	Affinity purified by Protein G.
Conjugation	Unconjugated

Note

For laboratory research use only. Not for any clinical, therapeutic, or diagnostic use in humans or animals. Not for animal or human consumption.

Purchasers shall not, and agree not to enable third parties to, analyze, copy, reverse engineer or otherwise attempt to determine the structure or sequence of the product.

For full product information, images and publications, please visit our [website](#).

DATA IMAGES

GTX629704 ICC/IF Image

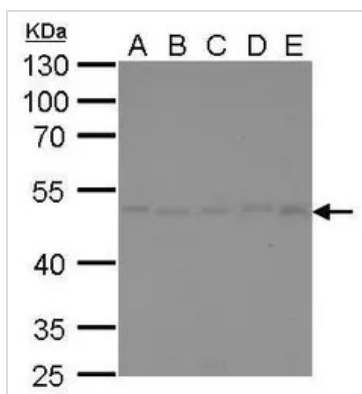
gamma Tubulin antibody [GT4511] detects gamma Tubulin protein at centrosome by immunofluorescent analysis.

Sample: HeLa cells were fixed in ice-cold MeOH for 5 min.

Green: gamma Tubulin stained by gamma Tubulin antibody [GT4511] (GTX629704) diluted at 1:500.

Red: alpha Tubulin, stained by alpha Tubulin antibody (GTX112141) diluted at 1:500.

Blue: Fluoroshield with DAPI (GTX30920).


GTX629704 WB Image

gamma Tubulin antibody detects gamma Tubulin protein by Western blot analysis.

A. 30 µg Neuro2A whole cell lysate/extract

B. 30 µg C8D30 whole cell lysate/extract

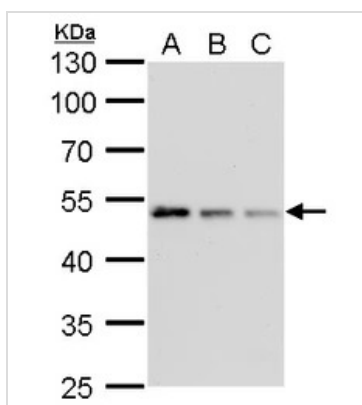
C. 30 µg NIH-3T3 whole cell lysate/extract

D. 30 µg BCL-1 whole cell lysate/extract

E. 30 µg C2C12 whole cell lysate/extract

10 % SDS-PAGE

gamma Tubulin antibody (GTX629704) dilution: 1:500


GTX629704 WB Image

gamma Tubulin antibody [GT4511] detects gamma Tubulin protein by Western blot analysis.

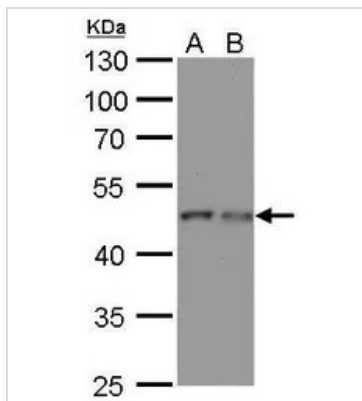
A. 30 µg Jurkat whole cell lysate/extract

B. 30 µg Raji whole cell lysate/extract

C. 30 µg NCI-H929 whole cell lysate/extract

10 % SDS-PAGE

gamma Tubulin antibody [GT4511] (GTX629704) dilution: 1:1000


GTX629704 WB Image

gamma Tubulin antibody detects gamma Tubulin protein by Western blot analysis.

A. 30 µg PC-12 whole cell lysate/extract

B. 30 µg Rat-2 whole cell lysate/extract

10 % SDS-PAGE

gamma Tubulin antibody (GTX629704) dilution: 1:500



For full product information, images and publications, please visit our [website](http://www.genetex.com).