

MX1 antibody [GT4812]

Cat. No. GTX629738

Host	Mouse
Clonality	Monoclonal
Isotype	IgG2a
Applications	WB, ICC/IF
Reactivity	Human

Package
100 µl, 25 µl

Applications

Application Note

*Optimal dilutions/concentrations should be determined by the researcher.

Suggested dilution	Recommended dilution
WB	1:5000-1:20000
ICC/IF	1:100-1:1000

Not tested in other applications.

Calculated MW 76 kDa. ([Note](#))

Product Note This antibody is specific for human MX1 protein, and it does not cross react with human MX2 protein.

Properties

Form	Liquid
Buffer	PBS, 20% Glycerol
Preservative	No preservatives
Storage	Store as concentrated solution. Centrifuge briefly prior to opening vial. For short-term storage (1-2 weeks), store at 4°C. For long-term storage, aliquot and store at -20°C or below. Avoid multiple freeze-thaw cycles.
Concentration	1 mg/ml (Please refer to the vial label for the specific concentration.)
Immunogen	Recombinant protein encompassing a sequence within the center region of human MX1. The exact sequence is proprietary.
Purification	Affinity purified by Protein G.
Conjugation	Unconjugated

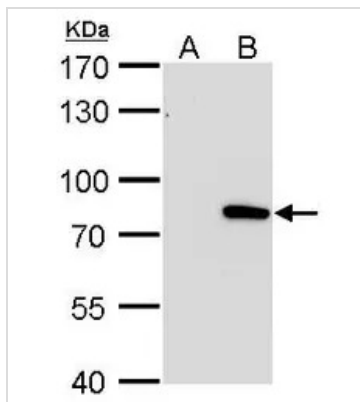
Note

For laboratory research use only. Not for any clinical, therapeutic, or diagnostic use in humans or animals. Not for animal or human consumption.

Purchasers shall not, and agree not to enable third parties to, analyze, copy, reverse engineer or otherwise attempt to determine the structure or sequence of the product.



For full product information, images and publications, please visit our [website](#).

DATA IMAGES

GTX629738 WB Image

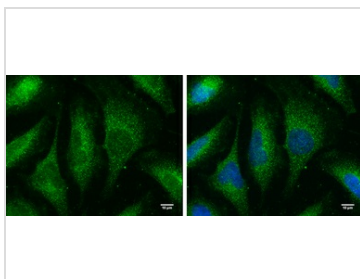
MX1 antibody [GT4812] detects MX1 protein by Western blot analysis.

A. 30 μ g 293T whole cell lysate/extract

B. 30 μ g whole cell lysate/extract of human MX1-transfected 293T cells

7.5 % SDS-PAGE

MX1 antibody [GT4812] (GTX629738) dilution: 1:10000


GTX629738 ICC/IF Image

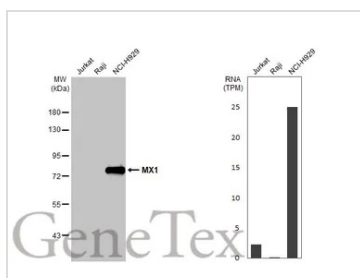
MX1 antibody [GT4812] detects MX1 protein by immunofluorescent analysis.

Sample: HeLa cells were fixed in 4% paraformaldehyde at RT for 10 min.

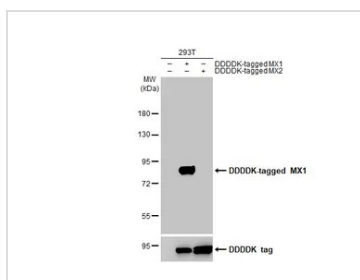
Green: MX1 protein stained by MX1 antibody [GT4812] (GTX629738) diluted at 1:100.

Blue: Hoechst 33342 staining.

Scale bar = 10 μ m.


GTX629738 WB Image

Various whole cell extracts (30 μ g) were separated by 7.5% SDS-PAGE, and the membrane was blotted with MX1 antibody [GT4812] (GTX629738) diluted at 1:1000. The HRP-conjugated anti-mouse IgG antibody (GTX213111-01) was used to detect the primary antibody. Corresponding RNA expression data for the same cell lines are based on Human Protein Atlas program.


GTX629738 WB Image

Non-transfected (-) and transfected (+) 293T whole cell extracts (30 μ g) were separated by 7.5% SDS-PAGE, and the membrane was blotted with MX1 antibody [GT4812] (GTX629738) diluted at 1:5000. The HRP-conjugated anti-mouse IgG antibody (GTX213111-01) was used to detect the primary antibody.



For full product information, images and publications, please visit our [website](https://www.genetex.com).