

## SOX1 antibody [EPR4766]

**Cat. No. GTX62974**

<b>Host</b>	Rabbit
<b>Clonality</b>	Monoclonal
<b>Isotype</b>	IgG
<b>Applications</b>	WB, ICC/IF, IHC-P, FCM
<b>Reactivity</b>	Human, Mouse

References ( 3 )

Package

100 µl

## Applications

**Application Note**

\*Optimal dilutions/concentrations should be determined by the researcher.

Suggested dilution	Recommended dilution
WB	Assay dependent
ICC/IF	Assay dependent
IHC-P	Assay dependent
FCM	Assay dependent

Not tested in other applications.

**Calculated MW** 39 kDa. ( [Note](#) )

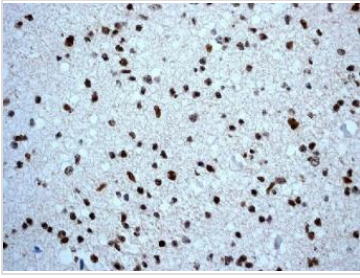
## Properties

<b>Form</b>	Liquid
<b>Buffer</b>	PBS containing 50% Glycerol, 0.05% BSA and 0.01% Sodium azide.
<b>Storage</b>	Store as concentrated solution. Centrifuge briefly prior to opening vial. For short-term storage (1-2 weeks), store at 4°C. For long-term storage, aliquot and store at -20°C or below. Avoid multiple freeze-thaw cycles.
<b>Immunogen</b>	Synthetic peptide corresponding to residues in Human SOX1.
<b>Purification</b>	Tissue culture supernatant
<b>Conjugation</b>	Unconjugated
<b>Note</b>	For <i>In vitro</i> laboratory use only. Not for any clinical, therapeutic, or diagnostic use in humans or animals. Not for animal or human consumption. RabMAB® technology is covered by the following U.S. Patents, No. 5,675,063 and/or 7,429,488.

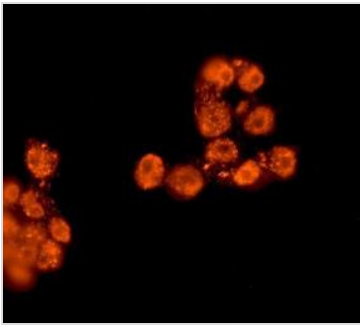


For full product information, images and publications, please visit our [website](#).

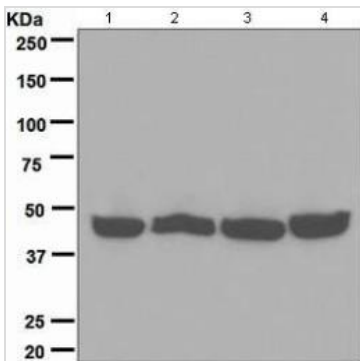
## DATA IMAGES

**GTX62974 IHC-P Image**

IHC-P analysis of human fetal brain tissue using SOX1 antibody [EPR4766] at a dilution of 1:100.

**GTX62974 ICC/IF Image**

ICC/IF analysis of NCCIT cells using SOX1 antibody [EPR4766] at a dilution of 1:100.

**GTX62974 WB Image**

WB analysis of (1) NCCIT, (2) SH-SY5Y, (3) MCF7 and (4) HeLa lysates (10 µg per lane) using SOX1 antibody [EPR4766] at a dilution of 1:1,000.



For full product information, images and publications, please visit our [website](#).