

# COL11A2 antibody [GT473]

**Cat. No. GTX629740**

|                     |                   |
|---------------------|-------------------|
| <b>Host</b>         | Mouse             |
| <b>Clonality</b>    | Monoclonal        |
| <b>Isotype</b>      | IgG2a             |
| <b>Applications</b> | WB, ICC/IF        |
| <b>Reactivity</b>   | Human, Mouse, Rat |

**Package**  
100 µl, 25 µl

## Applications

### Application Note

\*Optimal dilutions/concentrations should be determined by the researcher.

| Suggested dilution | Recommended dilution |
|--------------------|----------------------|
| WB                 | 1:500-1:3000         |
| ICC/IF             | 1:100-1:1000         |

Not tested in other applications.

**Calculated MW** 172 kDa. ([Note](#))

## Properties

|                      |  |
|----------------------|--|
| <b>Form</b>          | Liquid   |
| <b>Buffer</b>        | PBS  |
| <b>Preservative</b>  | No preservative  |
| <b>Storage</b>       | Store as concentrated solution. Centrifuge briefly prior to opening vial. For short-term storage (1-2 weeks), store at 4°C. For long-term storage, aliquot and store at -20°C or below. Avoid multiple freeze-thaw cycles. |
| <b>Concentration</b> | 1 mg/ml (Please refer to the vial label for the specific concentration.)   |
| <b>Immunogen</b>     | Recombinant protein encompassing a sequence within the N-terminus region of human COL11A2. The exact sequence is proprietary.  |
| <b>Purification</b>  | Affinity purified by Protein G.  |
| <b>Conjugation</b>   | Unconjugated   |

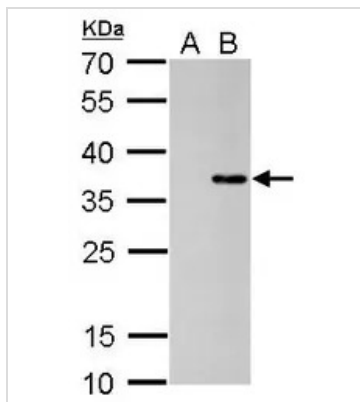
**Note**

For laboratory research use only. Not for any clinical, therapeutic, or diagnostic use in humans or animals. Not for animal or human consumption.

Purchasers shall not, and agree not to enable third parties to, analyze, copy, reverse engineer or otherwise attempt to determine the structure or sequence of the product.



For full product information, images and publications, please visit our [website](#).

**DATA IMAGES**

**GTx629740 WB Image**

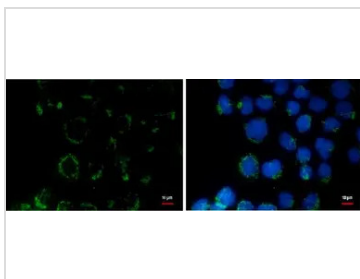
COL11A2 antibody [GT473] detects COL11A2 protein by Western blot analysis.

A. 30 µg 293T whole cell lysate/extract

B. 30 µg whole cell lysate/extract of human COL11A2-transfected 293T cells (N-terminal fragment of COL11A2 isoform 1)

12 % SDS-PAGE

COL11A2 antibody [GT473] (GTx629740) dilution: 1:5000

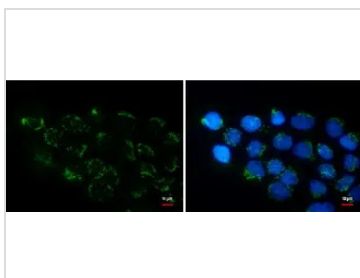

**GTx629740 ICC/IF Image**

COL11A2 antibody [GT473] detects COL11A2 protein at cytoplasm by immunofluorescent analysis.

Sample: A431 cells were fixed in ice-cold MeOH for 5 min.

Green: COL11A2 protein stained by COL11A2 antibody [GT473] (GTx629740) diluted at 1:500.

Blue: Hoechst 33342 staining.

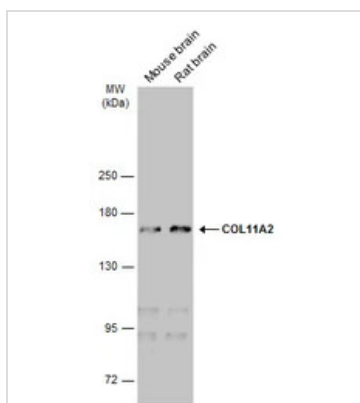

**GTx629740 ICC/IF Image**

COL11A2 antibody [GT473] detects COL11A2 protein at cytoplasm by immunofluorescent analysis.

Sample: A431 cells were fixed in 4% paraformaldehyde at RT for 15 min.

Green: COL11A2 protein stained by COL11A2 antibody [GT473] (GTx629740) diluted at 1:500.

Blue: Hoechst 33342 staining.


**GTx629740 WB Image**

Various tissue extracts (50 µg) were separated by 5% SDS-PAGE, and the membrane was blotted with COL11A2 antibody [GT473] (GTx629740) diluted at 1:500. The HRP-conjugated anti-mouse IgG antibody (GTx213111-01) was used to detect the primary antibody.



For full product information, images and publications, please visit our [website](https://www.genetex.com).