

# UVSSA antibody [GT816]

**Cat. No. GTX629742**

<b>Host</b>	Mouse
<b>Clonality</b>	Monoclonal
<b>Isotype</b>	IgG1
<b>Applications</b>	WB, ICC/IF
<b>Reactivity</b>	Human

**Package**  
100 µl, 25 µl

## Applications

### Application Note

\*Optimal dilutions/concentrations should be determined by the researcher.

Suggested dilution	Recommended dilution
WB	1:500-1:3000
ICC/IF	1:100-1:1000

Not tested in other applications.

**Calculated MW** 81 kDa. ( [Note](#) )

## Properties

<b>Form</b>	Liquid
<b>Buffer</b>	PBS
<b>Preservative</b>	No preservatives
<b>Storage</b>	Store as concentrated solution. Centrifuge briefly prior to opening vial. For short-term storage (1-2 weeks), store at 4°C. For long-term storage, aliquot and store at -20°C or below. Avoid multiple freeze-thaw cycles.
<b>Concentration</b>	1 mg/ml (Please refer to the vial label for the specific concentration.)
<b>Immunogen</b>	Recombinant protein encompassing a sequence within the N-terminus region of human UVSSA. The exact sequence is proprietary.
<b>Purification</b>	Affinity purified by Protein G.
<b>Conjugation</b>	Unconjugated

**Note**

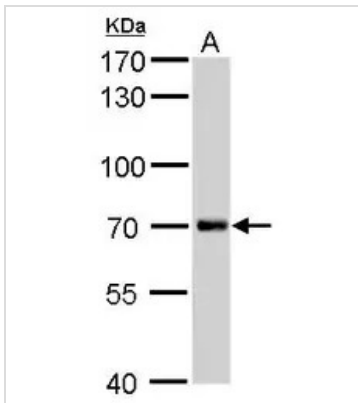
For laboratory research use only. Not for any clinical, therapeutic, or diagnostic use in humans or animals. Not for animal or human consumption.

Purchasers shall not, and agree not to enable third parties to, analyze, copy, reverse engineer or otherwise attempt to determine the structure or sequence of the product.



For full product information, images and publications, please visit our [website](#).

## DATA IMAGES



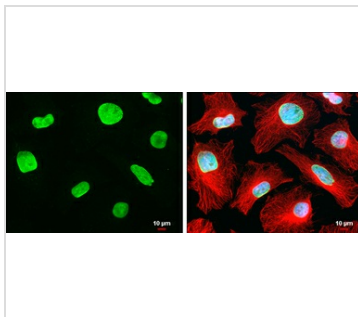
### GTX629742 WB Image

UVSSA antibody [GT816] detects UVSSA protein by Western blot analysis.

A. 30 µg A375 whole cell lysate/extract

7.5 % SDS-PAGE

UVSSA antibody [GT816] (GTX629742) dilution: 1:500



### GTX629742 ICC/IF Image

UVSSA antibody [GT816] detects UVSSA protein at nucleus by immunofluorescent analysis.

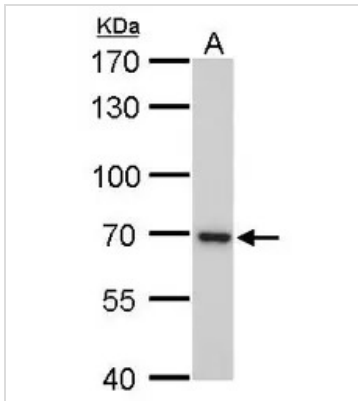
Sample: HeLa cells were fixed in 4% paraformaldehyde at RT for 15 min.

Green: UVSSA stained by UVSSA antibody [GT816] (GTX629742) diluted at 1:500.

Red: alpha Tubulin 4a, a cytoskeleton marker, stained by alpha Tubulin 4a antibody (GTX112141) diluted at 1:500.

Blue: Hoechst 33342 staining.

Scale bar = 10 µm.



### GTX629742 WB Image

UVSSA antibody [GT816] detects UVSSA protein by Western blot analysis.

A. 30 µg HeLa whole cell lysate/extract

7.5 % SDS-PAGE

UVSSA antibody [GT816] (GTX629742) dilution: 1:500



For full product information, images and publications, please visit our [website](#).