

## Vimentin antibody [GT812]

**Cat. No. GTX629744**

<b>Host</b>	Mouse
<b>Clonality</b>	Monoclonal
<b>Isotype</b>	IgG2b
<b>Applications</b>	WB, ICC/IF, IHC-P, IHC-Fr, FCM, IP, ELISA, Sandwich ELISA
<b>Reactivity</b>	Human, Mouse, Rat, Cat

References ( 9 )

★★★★★ Review ( 1 )

Package

100 µl, 25 µl

## Applications

**Application Note**

\*Optimal dilutions/concentrations should be determined by the researcher.

Suggested dilution	Recommended dilution
WB	1:500-1:75000
ICC/IF	Assay dependent
IHC-P	1:100-1:1000
IHC-Fr	1:100-1:1000
FCM	Assay dependent
IP	Assay dependent
ELISA	Assay dependent
Sandwich ELISA	Assay dependent

**Note : Capture : GTX629744, Detection : GTX112661 / GTX100619**

Not tested in other applications.

<b>Calculated MW</b>	54 kDa. ( <a href="#">Note</a> )
<b>Product Note</b>	IP/MS validation is based on published data (PMID: 30377427).

## Properties

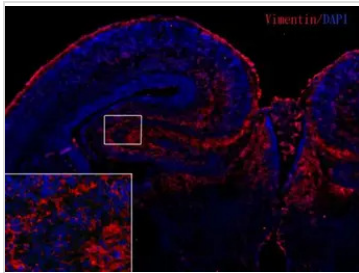
<b>Form</b>	Liquid
<b>Buffer</b>	PBS
<b>Preservative</b>	No preservatives
<b>Storage</b>	Store as concentrated solution. Centrifuge briefly prior to opening vial. For short-term storage (1-2 weeks), store at 4°C. For long-term storage, aliquot and store at -20°C or below. Avoid multiple freeze-thaw cycles.
<b>Concentration</b>	1 mg/ml (Please refer to the vial label for the specific concentration.)



For full product information, images and publications, please visit our [website](#).

<b>Immunogen</b>	Recombinant protein encompassing a sequence within the center region of human Vimentin. The exact sequence is proprietary.
<b>Purification</b>	Affinity purified by Protein G.
<b>Conjugation</b>	Unconjugated
<b>Note</b>	For laboratory research use only. Not for any clinical, therapeutic, or diagnostic use in humans or animals. Not for animal or human consumption.  Purchasers shall not, and agree not to enable third parties to, analyze, copy, reverse engineer or otherwise attempt to determine the structure or sequence of the product.

## DATA IMAGES



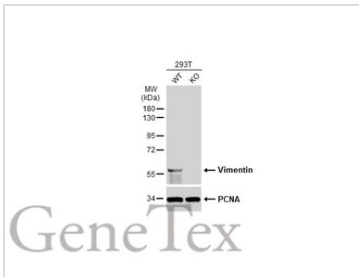
### GTX629744 IHC-Fr Image

Vimentin antibody [GT812] detects Vimentin proteins in embryonic mouse brain by immunohistochemical analysis.

Sample: Frozen section of embryonic mouse brain (mE18.5).

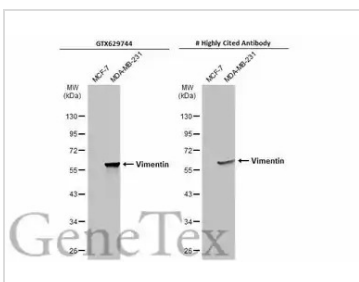
Red: Vimentin antibody [GT812] (GTX629744) diluted at 1:250.

Blue: DAPI.



### GTX629744 WB Image

Wild-type (WT) and Vimentin knockout (KO) 293T cell extracts (30 µg) were separated by 10% SDS-PAGE, and the membrane was blotted with Vimentin antibody [GT812] (GTX629744) diluted at 1:5000. The HRP-conjugated anti-mouse IgG antibody (GTX213111-01) was used to detect the primary antibody.



### GTX629744 WB Image

Various whole cell extracts (30 µg) were separated by 10% SDS-PAGE, and the membranes were blotted with Vimentin antibody [GT812] (GTX629744) diluted at 1:5000 and competitor's antibody diluted at 1:5000. The HRP-conjugated anti-mouse IgG antibody (GTX213111-01) was used to detect the primary antibody.

\*The competitor is not affiliated with GeneTex and does not endorse this product.



For full product information, images and publications, please visit our [website](https://www.genetex.com).