

# Fatty Acid Synthase antibody [GT5210]

**Cat. No. GTX629761**

|                    |            |
|--------------------|------------|
| <b>Host</b>        | Mouse      |
| <b>Clonality</b>   | Monoclonal |
| <b>Isotype</b>     | IgG2a      |
| <b>Application</b> | WB, ICC/IF |
| <b>Reactivity</b>  | Human      |

**Package**  
100 µl, 25 µl

## APPLICATION

### Application Note

\*Optimal dilutions/concentrations should be determined by the researcher.

| Suggested dilution | Recommended dilution |
|--------------------|----------------------|
| WB                 | 1:500-1:3000         |
| ICC/IF             | 1:100-1:1000         |

Not tested in other applications.

**Calculated MW** 273 kDa. ([Note](#))

## PROPERTIES

|                      |  |
|----------------------|--|
| <b>Form</b>          | Liquid   |
| <b>Buffer</b>        | PBS  |
| <b>Preservative</b>  | No preservative  |
| <b>Storage</b>       | Store as concentrated solution. Centrifuge briefly prior to opening vial. For short-term storage (1-2 weeks), store at 4°C. For long-term storage, aliquot and store at -20°C or below. Avoid multiple freeze-thaw cycles. |
| <b>Concentration</b> | 1 mg/ml (Please refer to the vial label for the specific concentration.)   |
| <b>Immunogen</b>     | Recombinant protein encompassing a sequence within the N-terminus region of human Fatty Acid Synthase. The exact sequence is proprietary.  |
| <b>Purification</b>  | Affinity purified by Protein G.  |
| <b>Conjugation</b>   | Unconjugated   |

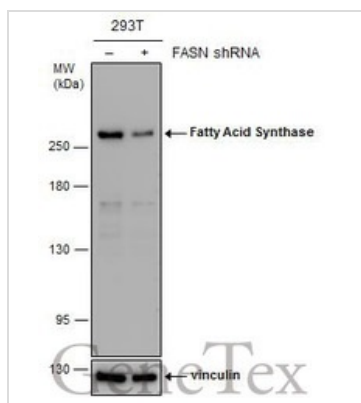
**Note**

For laboratory research use only. Not for any clinical, therapeutic, or diagnostic use in humans or animals. Not for animal or human consumption.

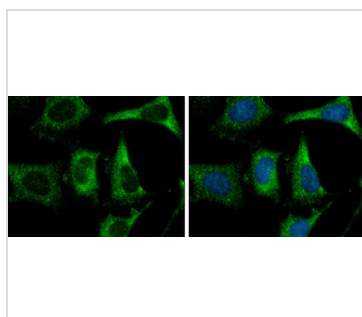
Purchasers shall not, and agree not to enable third parties to, analyze, copy, reverse engineer or otherwise attempt to determine the structure or sequence of the product.



For full product information, images and publications, please visit our [website](#).

**DATA IMAGES**

**GTX629761 WB Image**

Non-transfected (–) and transfected (+) 293T whole cell extracts (30 µg) were separated by 5% SDS-PAGE, and the membrane was blotted with Fatty Acid Synthase antibody [GT5210] (GTX629761) diluted at 1:500.

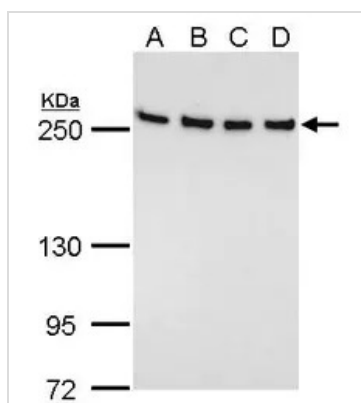

**GTX629761 ICC/IF Image**

Fatty Acid Synthase antibody [GT5210] detects Fatty Acid Synthase protein at cytoplasm by immunofluorescent analysis.

Sample: HeLa cells were fixed in 4% paraformaldehyde at RT for 15 min.

Green: Fatty Acid Synthase protein stained by Fatty Acid Synthase antibody [GT5210] (GTX629761) diluted at 1:200.

Blue: Hoechst 33342 staining.


**GTX629761 WB Image**

Fatty Acid Synthase antibody [GT5210] detects Fatty Acid Synthase protein by Western blot analysis.

A. 30 µg 293T whole cell lysate/extract

B. 30 µg A431 whole cell lysate/extract

C. 30 µg HeLa whole cell lysate/extract

D. 30 µg HepG2 whole cell lysate/extract

5 % SDS-PAGE

Fatty Acid Synthase antibody [GT5210] (GTX629761) dilution: 1:1000



For full product information, images and publications, please visit our [website](https://www.genetex.com).