

Fatty Acid Synthase antibody [GT556]

Cat. No. GTX629762

Host	Mouse
Clonality	Monoclonal
Isotype	IgG1
Application	WB, ICC/IF, IHC-P
Reactivity	Human, Mouse, Rat

Package
100 µl, 25 µl

APPLICATION

Application Note

*Optimal dilutions/concentrations should be determined by the researcher.

Suggested dilution	Recommended dilution
WB	1:500-1:3000
ICC/IF	1:100-1:1000
IHC-P	1:100-1:1000

Not tested in other applications.

Calculated MW 273 kDa. ([Note](#))

PROPERTIES

Form	Liquid
Buffer	PBS
Preservative	No preservative
Storage	Store as concentrated solution. Centrifuge briefly prior to opening vial. For short-term storage (1-2 weeks), store at 4°C. For long-term storage, aliquot and store at -20°C or below. Avoid multiple freeze-thaw cycles.
Concentration	1 mg/ml (Please refer to the vial label for the specific concentration.)
Immunogen	Recombinant protein encompassing a sequence within the N-terminus region of human Fatty Acid Synthase. The exact sequence is proprietary.
Purification	Affinity purified by Protein G.
Conjugation	Unconjugated

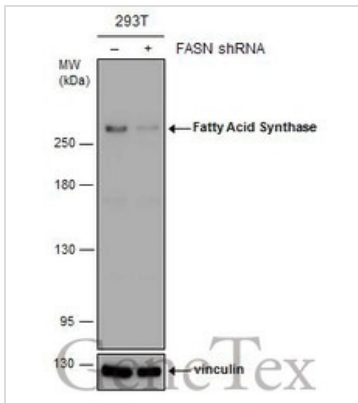
Note

For laboratory research use only. Not for any clinical, therapeutic, or diagnostic use in humans or animals. Not for animal or human consumption.

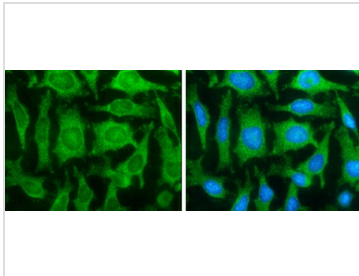
Purchasers shall not, and agree not to enable third parties to, analyze, copy, reverse engineer or otherwise attempt to determine the structure or sequence of the product.



For full product information, images and publications, please visit our [website](#).

DATA IMAGES

GTX629762 WB Image

Non-transfected (–) and transfected (+) 293T whole cell extracts (30 µg) were separated by 5% SDS-PAGE, and the membrane was blotted with Fatty Acid Synthase antibody [GT556] (GTX629762) diluted at 1:500.

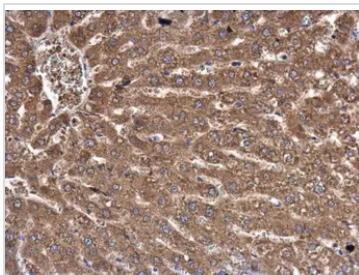

GTX629762 ICC/IF Image

Fatty Acid Synthase antibody [GT556] detects Fatty Acid Synthase protein at cytoplasm by immunofluorescent analysis.

Sample: HeLa cells were fixed in ice-cold MeOH for 5 min.

Green: Fatty Acid Synthase stained by Fatty Acid Synthase antibody [GT556] (GTX629762) diluted at 1:100.

Blue: Hoechst 33342 staining.

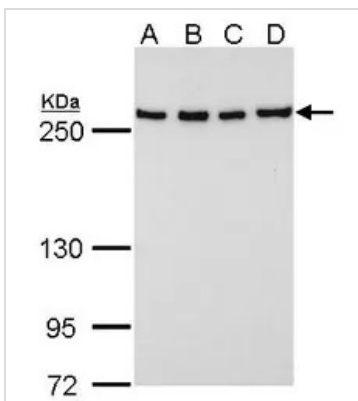

GTX629762 IHC-P Image

Fatty Acid Synthase antibody [GT556] detects Fatty Acid Synthase protein at cytoplasm in rat liver by immunohistochemical analysis.

Sample: Paraffin-embedded rat liver.

Fatty Acid Synthase antibody [GT556] (GTX629762) diluted at 1:250.

Antigen Retrieval: Citrate buffer, pH 6.0, 15 min


GTX629762 WB Image

Fatty Acid Synthase antibody [GT556] detects Fatty Acid Synthase protein by Western blot analysis.

A. 30 µg 293T whole cell lysate/extract

B. 30 µg A431 whole cell lysate/extract

C. 30 µg HeLa whole cell lysate/extract

D. 30 µg HepG2 whole cell lysate/extract

5 % SDS-PAGE

Fatty Acid Synthase antibody [GT556] (GTX629762) dilution: 1:1000



For full product information, images and publications, please visit our [website](https://www.genetex.com).