

# BMP8b antibody [GT1017]

**Cat. No. GTX629764**

|                     |            |
|---------------------|------------|
| <b>Host</b>         | Mouse      |
| <b>Clonality</b>    | Monoclonal |
| <b>Isotype</b>      | IgG2a      |
| <b>Applications</b> | WB, ICC/IF |
| <b>Reactivity</b>   | Human      |

**Package**  
100 µl, 25 µl

## Applications

### Application Note

\*Optimal dilutions/concentrations should be determined by the researcher.

| Suggested dilution | Recommended dilution |
|--------------------|----------------------|
| WB                 | 1:5000-1:20000       |
| ICC/IF             | 1:100-1:1000         |

Not tested in other applications.

**Calculated MW** 45 kDa. ( [Note](#) )

## Properties

|                      |  |
|----------------------|--|
| <b>Form</b>          | Liquid   |
| <b>Buffer</b>        | PBS  |
| <b>Preservative</b>  | No preservative  |
| <b>Storage</b>       | Store as concentrated solution. Centrifuge briefly prior to opening vial. For short-term storage (1-2 weeks), store at 4°C. For long-term storage, aliquot and store at -20°C or below. Avoid multiple freeze-thaw cycles. |
| <b>Concentration</b> | 1 mg/ml (Please refer to the vial label for the specific concentration.)   |
| <b>Immunogen</b>     | Recombinant protein encompassing a sequence within the center region of human BMP8b. The exact sequence is proprietary.  |
| <b>Purification</b>  | Affinity purified by Protein G.  |
| <b>Conjugation</b>   | Unconjugated   |

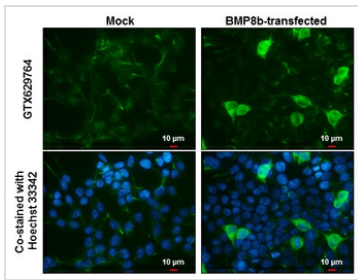
**Note**

For laboratory research use only. Not for any clinical, therapeutic, or diagnostic use in humans or animals. Not for animal or human consumption.

Purchasers shall not, and agree not to enable third parties to, analyze, copy, reverse engineer or otherwise attempt to determine the structure or sequence of the product.



For full product information, images and publications, please visit our [website](#).

**DATA IMAGES**

**GTX629764 ICC/IF Image**

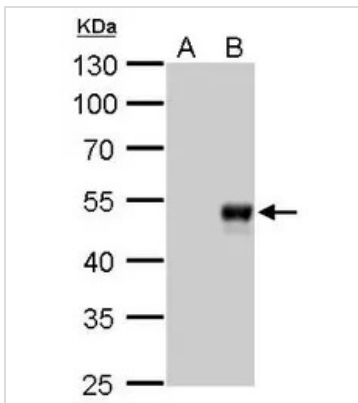
BMP8b antibody [GT1017] detects BMP8b protein at cytoplasm by immunofluorescent analysis.

Sample: Mock and transfected 293T cells were fixed in 4% paraformaldehyde at RT for 15 min.

Green: BMP8b stained by BMP8b antibody [GT1017] (GTX629764) diluted at 1:1000.

Blue: Hoechst 33342 staining.

Scale bar = 10 μm.


**GTX629764 WB Image**

BMP8B antibody [GT1017] detects BMP8B protein by Western blot analysis.

A. 30 μg 293T whole cell lysate/extract

B. 30 whole cell lysate/extract of Myc-DDK-human BMP8B-transfected 293T cells

10 % SDS-PAGE

BMP8B antibody [GT1017] (GTX629764) dilution: 1:10000



For full product information, images and publications, please visit our [website](#).