

ARHGEF18 antibody [GT1972]

Cat. No. GTX629806

Host	Mouse
Clonality	Monoclonal
Isotype	IgG2a
Applications	WB, IHC-P
Reactivity	Human, Mouse, Rat

References (1)

Package

100 µl, 25 µl

Applications

Application Note

*Optimal dilutions/concentrations should be determined by the researcher.

Suggested dilution	Recommended dilution
WB	1:500-1:3000
IHC-P	1:100-1:1000

Not tested in other applications.

Calculated MW 131 kDa. ([Note](#))

Properties

Form	Liquid
Buffer	PBS
Preservative	No preservatives
Storage	Store as concentrated solution. Centrifuge briefly prior to opening vial. For short-term storage (1-2 weeks), store at 4°C. For long-term storage, aliquot and store at -20°C or below. Avoid multiple freeze-thaw cycles.
Concentration	1 mg/ml (Please refer to the vial label for the specific concentration.)
Immunogen	Recombinant protein encompassing a sequence within the center region of human ARHGEF18. The exact sequence is proprietary.
Purification	Affinity purified by Protein G.
Conjugation	Unconjugated

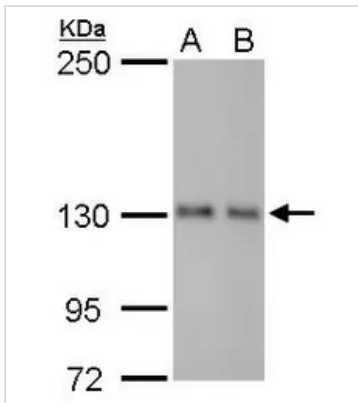
Note

For laboratory research use only. Not for any clinical, therapeutic, or diagnostic use in humans or animals. Not for animal or human consumption.

Purchasers shall not, and agree not to enable third parties to, analyze, copy, reverse engineer or otherwise attempt to determine the structure or sequence of the product.



For full product information, images and publications, please visit our [website](#).

DATA IMAGES

GTX629806 WB Image

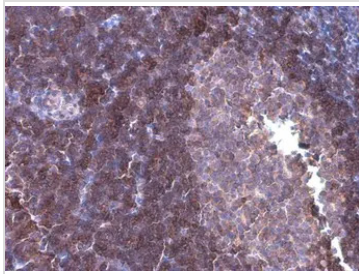
ARHGEF18 antibody [GT1972] detects ARHGEF18 protein by Western blot analysis.

A. 30 µg PC-12 whole cell lysate/extract

B. 30 µg Rat-2 whole cell lysate/extract

5 % SDS-PAGE

ARHGEF18 antibody [GT1972] (GTX629806) dilution: 1:1000

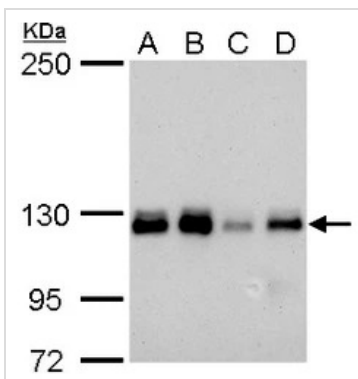

GTX629806 IHC-P Image

ARHGEF18 antibody [GT1972] detects ARHGEF18 protein at cytoplasm by immunohistochemical analysis.

Sample: Paraffin-embedded rat lymph node.

ARHGEF18 stained by ARHGEF18 antibody [GT1972] (GTX629806) diluted at 1:200.

Antigen Retrieval: Citrate buffer, pH 6.0, 15 min


GTX629806 WB Image

ARHGEF18 antibody [GT1972] detects ARHGEF18 protein by Western blot analysis.

A. 30 µg 293T whole cell lysate/extract

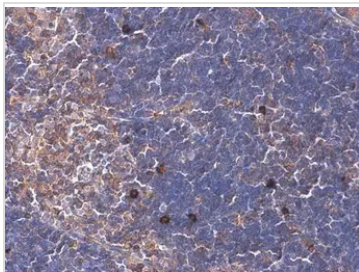
B. 30 µg A431 whole cell lysate/extract

C. 30 µg HeLa whole cell lysate/extract

D. 30 µg HepG2 whole cell lysate/extract

5 % SDS-PAGE

ARHGEF18 antibody [GT1972] (GTX629806) dilution: 1:3000


GTX629806 IHC-P Image

ARHGEF18 antibody [GT1972] detects ARHGEF18 protein at cytoplasm by immunohistochemical analysis.

Sample: Paraffin-embedded mouse thymus gland.

ARHGEF18 stained by ARHGEF18 antibody [GT1972] (GTX629806) diluted at 1:200.

Antigen Retrieval: Citrate buffer, pH 6.0, 15 min



For full product information, images and publications, please visit our [website](https://www.genetex.com).