

ATG12 antibody [GT166]

Cat. No. GTX629815

Host	Mouse
Clonality	Monoclonal
Isotype	IgG2b
Applications	WB, ICC/IF, PLA
Reactivity	Human, Mouse

References (5)

Package

100 µl, 25 µl

Applications

Application Note

*Optimal dilutions/concentrations should be determined by the researcher.

Suggested dilution	Recommended dilution
WB	1:500-1:3000
ICC/IF	1:100-1:1000
PLA	Assay dependent

Not tested in other applications.

Calculated MW 15 kDa. ([Note](#))

Properties

Form	Liquid
Buffer	PBS
Preservative	No preservative
Storage	Store as concentrated solution. Centrifuge briefly prior to opening vial. For short-term storage (1-2 weeks), store at 4°C. For long-term storage, aliquot and store at -20°C or below. Avoid multiple freeze-thaw cycles.
Concentration	1 mg/ml (Please refer to the vial label for the specific concentration.)
Immunogen	Recombinant protein encompassing a sequence within the center region of human ATG12. The exact sequence is proprietary.
Purification	Affinity purified by Protein G.
Conjugation	Unconjugated

Note

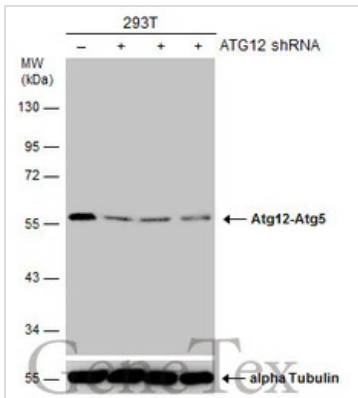
For laboratory research use only. Not for any clinical, therapeutic, or diagnostic use in humans or animals. Not for animal or human consumption.

Purchasers shall not, and agree not to enable third parties to, analyze, copy, reverse engineer or otherwise attempt to determine the structure or sequence of the product.



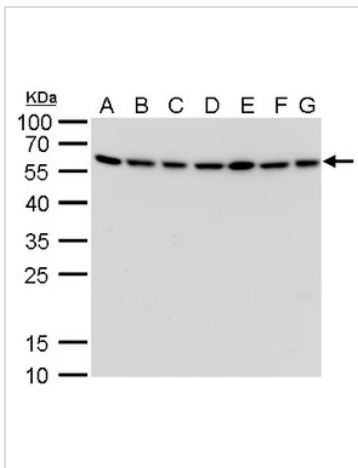
For full product information, images and publications, please visit our [website](#).

DATA IMAGES



GTX629815 WB Image

Non-transfected (-) and transfected (+) 293T whole cell extracts (30 µg) were separated by 10% SDS-PAGE, and the membrane was blotted with ATG12 antibody [GT166] (GTX629815) diluted at 1:500. The HRP-conjugated anti-mouse IgG antibody (GTX213111-01) was used to detect the primary antibody.



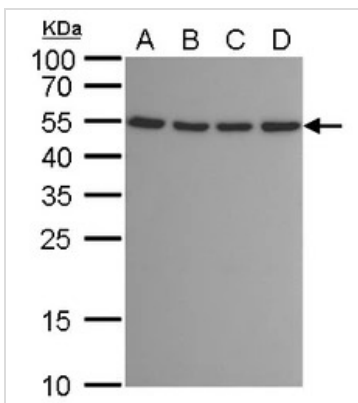
GTX629815 WB Image

ATG12 antibody [GT166] detects ATG12 protein by western blot analysis.

- A. 30 µg Neuro2A whole cell lysate/extract
 - B. 30 µg GL261 whole cell lysate/extract
 - C. 30 µg C8D30 whole cell lysate/extract
 - D. 30 µg NIH-3T3 whole cell lysate/extract
 - E. 30 µg BCL-1 whole cell lysate/extract
 - F. 30 µg Raw264.7 whole cell lysate/extract
 - G. 30 µg C2C12 whole cell lysate/extract
- 12% SDS-PAGE

ATG12 antibody [GT166] (GTX629815) dilution: 1:1000

The HRP-conjugated anti-mouse IgG antibody (GTX213111-01) was used to detect the primary antibody.



GTX629815 WB Image

ATG12 antibody [GT166] detects ATG12 protein by western blot analysis.

- A. 30 µg 293T whole cell lysate/extract
 - B. 30 µg A431 whole cell lysate/extract
 - C. 30 µg HeLa whole cell lysate/extract
 - D. 30 µg HepG2 whole cell lysate/extract
- 12% SDS-PAGE

ATG12 antibody [GT166] (GTX629815) dilution: 1:1000

The HRP-conjugated anti-mouse IgG antibody (GTX213111-01) was used to detect the primary antibody.



For full product information, images and publications, please visit our [website](http://www.genetex.com).