

## TET2 antibody [GT411]

Cat. No. GTX629879

Host	Mouse
Clonality	Monoclonal
Isotype	IgG1
Applications	WB, IP
Reactivity	Human

★★★★☆ Review ( 1 )

Package  
100 µl, 25 µl

## Applications

## Application Note

\*Optimal dilutions/concentrations should be determined by the researcher.

Suggested dilution	Recommended dilution
WB	1:500-1:3000
IP	1:100-1:500

Not tested in other applications.

Calculated MW 224 kDa. ( [Note](#) )

Product Note Knockdown/Knockout validation was supported by customer review data.

## Properties

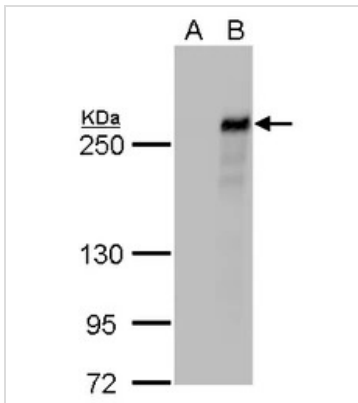
Form	Liquid
Buffer	PBS
Preservative	No preservatives
Storage	Store as concentrated solution. Centrifuge briefly prior to opening vial. For short-term storage (1-2 weeks), store at 4°C. For long-term storage, aliquot and store at -20°C or below. Avoid multiple freeze-thaw cycles.
Concentration	1 mg/ml (Please refer to the vial label for the specific concentration.)
Immunogen	Recombinant protein encompassing a sequence within the N-terminus region of human TET2. The exact sequence is proprietary.
Purification	Affinity purified by Protein G.
Conjugation	Unconjugated

## Note

For laboratory research use only. Not for any clinical, therapeutic, or diagnostic use in humans or animals. Not for animal or human consumption.

Purchasers shall not, and agree not to enable third parties to, analyze, copy, reverse engineer or otherwise attempt to determine the structure or sequence of the product.

For full product information, images and publications, please visit our [website](#).

**DATA IMAGES**

**GTX629879 WB Image**

TET2 antibody [GT411] detects TET2 protein by western blot analysis.

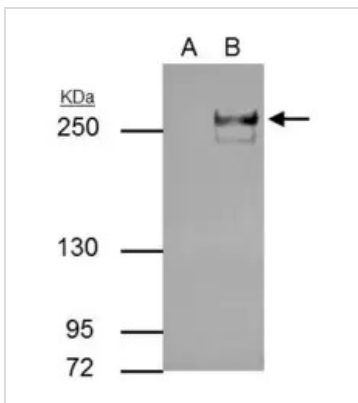
A. 30 µg 293T whole cell lysate/extract

B. 30 µg whole cell lysate/extract of DDDDK-human TET2-transfected 293T cells

5% SDS-PAGE

TET2 antibody [GT411] (GTX629879) dilution: 1:1000

The HRP-conjugated anti-mouse IgG antibody (GTX213111-01) was used to detect the primary antibody.


**GTX629879 IP Image**

TET2 antibody [GT411] immunoprecipitates TET2 protein in IP experiments.

IP samples: 30 µg whole cell extract of TET2-transfected 293T cells.

A. Control with 5 µg of preimmune Rabbit IgG

B. Immunoprecipitation of TET2 protein by 5 µg TET2 antibody [GT411] (GTX629879)

5 % SDS-PAGE

The immunoprecipitated TET2 protein was detected by TET2 antibody [GT411] (GTX629879) diluted at 1:500.

[EasyBlot anti-rabbit IgG (GTX221666-01) was used as a secondary reagent]



For full product information, images and publications, please visit our [website](https://www.genetex.com).