

## TET2 antibody [GT442]

**Cat. No. GTX629880**

<b>Host</b>	Mouse
<b>Clonality</b>	Monoclonal
<b>Isotype</b>	IgG2a
<b>Applications</b>	WB, IP
<b>Reactivity</b>	Human

**Package**  
100 µl, 25 µl

## Applications

**Application Note**

\*Optimal dilutions/concentrations should be determined by the researcher.

Suggested dilution	Recommended dilution
WB	1:1000-1:10000
IP	1:100-1:500

Not tested in other applications.

**Calculated MW** 224 kDa. ([Note](#))

## Properties

<b>Form</b>	Liquid
<b>Buffer</b>	PBS
<b>Preservative</b>	No preservatives
<b>Storage</b>	Store as concentrated solution. Centrifuge briefly prior to opening vial. For short-term storage (1-2 weeks), store at 4°C. For long-term storage, aliquot and store at -20°C or below. Avoid multiple freeze-thaw cycles.
<b>Concentration</b>	1 mg/ml (Please refer to the vial label for the specific concentration.)
<b>Immunogen</b>	Recombinant protein encompassing a sequence within the N-terminus region of human TET2. The exact sequence is proprietary.
<b>Purification</b>	Affinity purified by Protein G.
<b>Conjugation</b>	Unconjugated

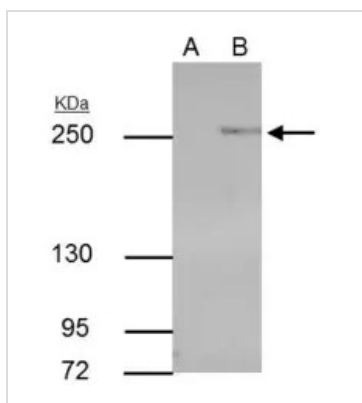
**Note** For laboratory research use only. Not for any clinical, therapeutic, or diagnostic use in humans or animals. Not for animal or human consumption.

Purchasers shall not, and agree not to enable third parties to, analyze, copy, reverse engineer or otherwise attempt to determine the structure or sequence of the product.



For full product information, images and publications, please visit our [website](#).

## DATA IMAGES

**GTX629880 IP Image**

TET2 antibody [GT422] immunoprecipitates TET2 protein in IP experiments.

IP samples: 30  $\mu$ g whole cell extract of TET2-transfected 293T cells.

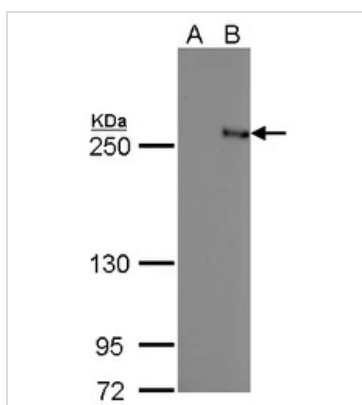
A. Control with 5  $\mu$ g of preimmune Rabbit IgG

B. Immunoprecipitation of TET2 protein by 5  $\mu$ g TET2 antibody [GT422] (GTX629880)

5 % SDS-PAGE

The immunoprecipitated TET2 protein was detected by TET2 antibody [GT422] (GTX629880) diluted at 1:500.

[EasyBlot anti-rabbit IgG (GTX221666-01) was used as a secondary reagent]

**GTX629880 WB Image**

TET2 antibody [GT442] detects TET2 protein by Western blot analysis.

A. 30  $\mu$ g 293T whole cell lysate/extract

B. 30  $\mu$ g whole cell lysate/extract of DDDDK-human TET2-transfected 293T cells

5 % SDS-PAGE

TET2 antibody [GT442] (GTX629880) dilution: 1:5000



For full product information, images and publications, please visit our [website](#).