

TET2 antibody [GT649]

Cat. No. GTX629881

Host	Mouse
Clonality	Monoclonal
Isotype	IgG1
Application	WB, IP, ChIP assay, EM
Reactivity	Human

Reference (1)
 Package
 100 µl, 25 µl

APPLICATION

Application Note

*Optimal dilutions/concentrations should be determined by the researcher.

Suggested dilution	Recommended dilution
WB	1:500-1:3000
IP	1:100-1:500
ChIP assay	Assay dependent
EM	Assay dependent

Not tested in other applications.

Calculated MW 224 kDa. ([Note](#))

PROPERTIES

Form	Liquid
Buffer	PBS
Preservative	No preservative
Storage	Store as concentrated solution. Centrifuge briefly prior to opening vial. For short-term storage (1-2 weeks), store at 4°C. For long-term storage, aliquot and store at -20°C or below. Avoid multiple freeze-thaw cycles.
Concentration	1 mg/ml (Please refer to the vial label for the specific concentration.)
Immunogen	Recombinant protein encompassing a sequence within the N-terminus region of human TET2. The exact sequence is proprietary.
Purification	Affinity purified by Protein G.
Conjugation	Unconjugated



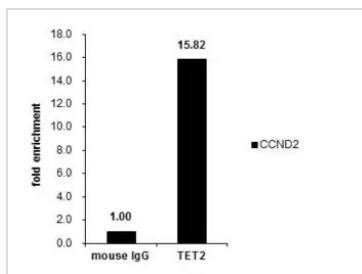
For full product information, images and publications, please visit our [website](#).

For laboratory research use only. Not for any clinical, therapeutic, or diagnostic use in humans or animals. Not for animal or human consumption.

Note

Purchasers shall not, and agree not to enable third parties to, analyze, copy, reverse engineer or otherwise attempt to determine the structure or sequence of the product.

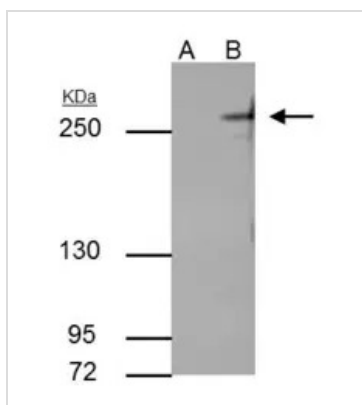
DATA IMAGES



GTX629881 ChIP assay Image

Cross-linked ChIP was performed with HeLa chromatin extract and 5 µg of either control mouse IgG or anti-TET2 antibody. The precipitated DNA was detected by PCR with primer set targeting to CCND2.

ChIP experiment and primer designs are based on [Nat Commun. 2013;4:2166](https://doi.org/10.1038/ncomms2166).



GTX629881 IP Image

TET2 antibody [GT649] immunoprecipitates TET2 protein in IP experiments.

IP samples: 30 µg whole cell extract of TET2-transfected 293T cells.

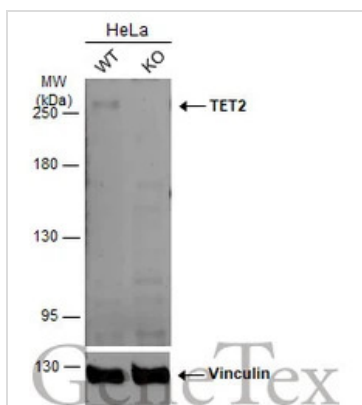
A. Control with 5 µg of preimmune Rabbit IgG

B. Immunoprecipitation of TET2 protein by 5 µg TET2 antibody [GT649] (GTX629881)

5 % SDS-PAGE

The immunoprecipitated TET2 protein was detected by TET2 antibody [GT649] (GTX629881) diluted at 1:1000.

[EasyBlot anti-rabbit IgG (GTX221666-01) was used as a secondary reagent]



GTX629881 WB Image

Wild-type (WT) and TET2 knockout (KO) HeLa cell extracts (30 µg) were separated by 5% SDS-PAGE, and the membrane was blotted with TET2 antibody [GT649] (GTX629881) diluted at 1:500. The HRP-conjugated anti-mouse IgG antibody (GTX213111-01) was used to detect the primary antibody, and the signal was developed with Trident ECL plus-Enhanced.



For full product information, images and publications, please visit our [website](https://www.genetex.com).