

Influenza B virus Nucleoprotein antibody [GT371]

Cat. No. GTX629882

Host	Mouse
Clonality	Monoclonal
Isotype	IgG2a
Applications	WB, ICC/IF, ELISA, Sandwich ELISA
Reactivity	Influenza B virus

Package

100 µl, 25 µl

Applications

Application Note

*Optimal dilutions/concentrations should be determined by the researcher.

Suggested dilution	Recommended dilution
WB	1:1000-1:10000
ICC/IF	1:100-1:2000
ELISA	Assay dependent
Sandwich ELISA	Assay dependent

Note : Capture : GTX629882, Detection : GTX128539 / GTX128538 or Capture : GTX128539, Detection : GTX629882

Not tested in other applications.

Properties

Form	Liquid
Buffer	PBS, 20% Glycerol
Preservative	No preservatives
Storage	Store as concentrated solution. Centrifuge briefly prior to opening vial. For short-term storage (1-2 weeks), store at 4°C. For long-term storage, aliquot and store at -20°C or below. Avoid multiple freeze-thaw cycles.
Concentration	1 mg/ml (Please refer to the vial label for the specific concentration.)
Immunogen	Recombinant protein encompassing a sequence within the N-terminus region of Influenza B virus Nucleoprotein (B/Taiwan/753/2005). The exact sequence is proprietary.
Purification	Affinity purified by Protein G.
Conjugation	Unconjugated

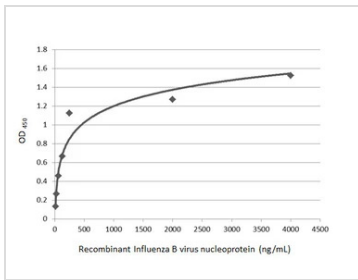
Note

For laboratory research use only. Not for any clinical, therapeutic, or diagnostic use in humans or animals. Not for animal or human consumption.

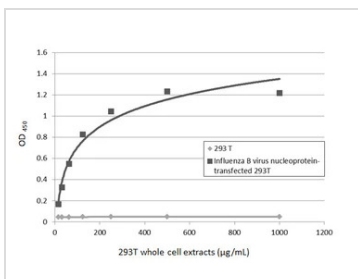
Purchasers shall not, and agree not to enable third parties to, analyze, copy, reverse engineer or otherwise attempt to determine the structure or sequence of the product.

For full product information, images and publications, please visit our [website](#).

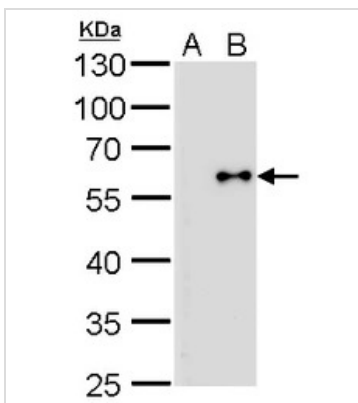
DATA IMAGES

**GTX629882 ELISA Image**

Sandwich ELISA detection of recombinant full-length Influenza B virus NP (nucleoprotein) protein, DDDDK tag (GTX135867-pro) using Influenza B virus Nucleoprotein antibody [GT371] (GTX629882) as capture antibody at concentration of 5 µg/mL and Influenza B virus Nucleoprotein antibody (GTX128539) as detection antibody at concentration of 1 µg/mL. Rabbit IgG antibody (HRP) (GTX213110-01) was diluted at 1:10000 and used to detect the primary antibody.

**GTX629882 ELISA Image**

Sandwich ELISA detection of non-transfected and Influenza B virus nucleoprotein transfected 293T whole cell extracts using Influenza B virus Nucleoprotein antibody [GT371] (GTX629882) as capture antibody at concentration of 5 µg/mL and Influenza B virus Nucleoprotein antibody (GTX128539) as detection antibody at concentration of 1 µg/mL. Rabbit IgG antibody (HRP) (GTX213110-01) was diluted at 1:10000 and used to detect the primary antibody.

**GTX629882 WB Image**

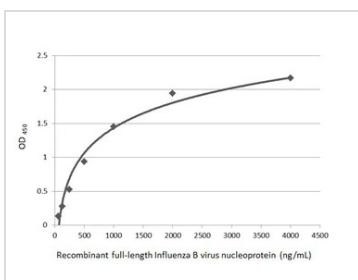
Influenza B Virus NP antibody [GT371] detects Influenza B Virus NP protein by Western blot analysis.

A. 1 µg MDCK whole cell lysate/extract

B. 1 µg whole cell lysate/extract of Influenza B virus (Taiwan 70555) infected MDCK cells

7.5 % SDS-PAGE

Influenza B Virus NP antibody [GT371] (GTX629882) dilution: 1:5000

**GTX629882 ELISA Image**

Sandwich ELISA detection of recombinant full-length Influenza B virus NP (nucleoprotein) protein, Flag tag (GTX135867-pro) using Influenza B virus Nucleoprotein antibody [GT371] (GTX629882) as capture antibody at concentration of 5 µg/mL and Influenza B virus Nucleoprotein antibody (GTX128538) as detection antibody at concentration of 1 µg/mL. Rabbit IgG antibody (HRP) (GTX213110-01) was diluted at 1:10000 and used to detect the primary antibody.



For full product information, images and publications, please visit our [website](#).