

PUF60 antibody [GT677]

Cat. No. GTX629886

Host	Mouse
Clonality	Monoclonal
Isotype	IgG2a
Applications	WB, ICC/IF, IHC-P
Reactivity	Human, Mouse, Rat

Package
100 µl, 25 µl

Applications

Application Note

*Optimal dilutions/concentrations should be determined by the researcher.

Suggested dilution	Recommended dilution
WB	1:1000-1:10000
ICC/IF	1:100-1:1000
IHC-P	1:100-1:1000

Not tested in other applications.

Calculated MW 60 kDa. ([Note](#))

Properties

Form	Liquid
Buffer	PBS
Preservative	No preservatives
Storage	Store as concentrated solution. Centrifuge briefly prior to opening vial. For short-term storage (1-2 weeks), store at 4°C. For long-term storage, aliquot and store at -20°C or below. Avoid multiple freeze-thaw cycles.
Concentration	1 mg/ml (Please refer to the vial label for the specific concentration.)
Immunogen	The immunogen used to generate this antibody corresponds to human PUF60
Purification	Affinity purified by Protein G.
Conjugation	Unconjugated

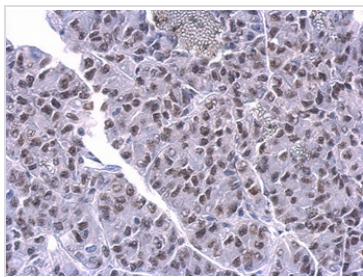
Note

For laboratory research use only. Not for any clinical, therapeutic, or diagnostic use in humans or animals. Not for animal or human consumption.

Purchasers shall not, and agree not to enable third parties to, analyze, copy, reverse engineer or otherwise attempt to determine the structure or sequence of the product.



For full product information, images and publications, please visit our [website](#).

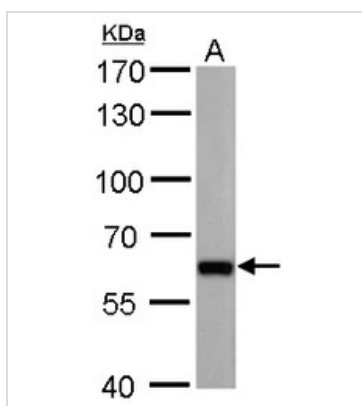
DATA IMAGES

GTX629886 IHC-P Image

PUF60 antibody [GT677] detects PUF60 protein at on gastric carcinoma by immunohistochemical analysis.

Sample: Paraffin-embedded AGS xenograft.

PUF60 antibody [GT677] (GTX629886) dilution: 1:100.

Antigen Retrieval: Trilogy™ (EDTA based, pH 8.0) buffer, 15min


GTX629886 WB Image

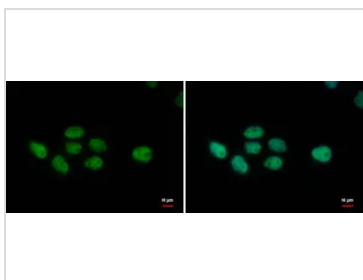
PUF60 antibody [GT677] detects PUF60 protein by western blot analysis.

A. 50 µg mouse brain lysate/extract

7.5% SDS-PAGE

PUF60 antibody [GT677] (GTX629886) dilution: 1:1000

The HRP-conjugated anti-mouse IgG antibody (GTX213111-01) was used to detect the primary antibody.

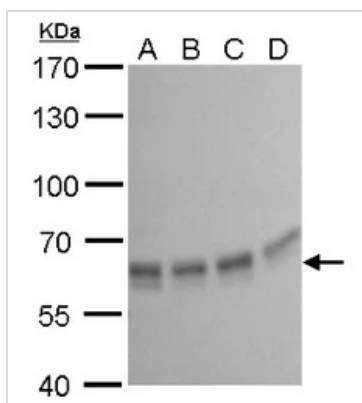

GTX629886 ICC/IF Image

PUF60 antibody [GT677] PUF60 antibody [GT677] detects PUF60 protein at nucleus by immunofluorescent analysis.

Sample: A431 cells were fixed in 4% paraformaldehyde at RT for 15 min.

Green: PUF60 protein stained by PUF60 antibody [GT677] (GTX629886) diluted at 1:500.

Blue: Hoechst 33342 staining.


GTX629886 WB Image

PUF60 antibody [GT677] detects PUF60 protein by western blot analysis.

A. 30 µg 293T whole cell lysate/extract

B. 30 µg A431 whole cell lysate/extract

C. 30 µg HeLa whole cell lysate/extract

D. 30 µg HepG2 whole cell lysate/extract

7.5% SDS-PAGE

PUF60 antibody [GT677] (GTX629886) dilution: 1:5000

The HRP-conjugated anti-mouse IgG antibody (GTX213111-01) was used to detect the primary antibody.



For full product information, images and publications, please visit our [website](https://www.genetex.com).