

SQSTM1 / P62 antibody [GT239]

Cat. No. GTX629888

Host	Mouse
Clonality	Monoclonal
Isotype	IgG2a
Applications	WB, ICC/IF
Reactivity	Human, Rat

References (1)

★★★★★ Review (1)

Package

100 µl, 25 µl

Applications

Application Note

*Optimal dilutions/concentrations should be determined by the researcher.

Suggested dilution	Recommended dilution
WB	1:500-1:3000
ICC/IF	1:100-1:2000

Not tested in other applications.

Calculated MW 48 kDa. ([Note](#))

Properties

Form	Liquid
Buffer	PBS
Preservative	No preservatives
Storage	Store as concentrated solution. Centrifuge briefly prior to opening vial. For short-term storage (1-2 weeks), store at 4°C. For long-term storage, aliquot and store at -20°C or below. Avoid multiple freeze-thaw cycles.
Concentration	1 mg/ml (Please refer to the vial label for the specific concentration.)
Immunogen	Recombinant protein encompassing a sequence within the center region of human SQSTM1 / P62. The exact sequence is proprietary.
Purification	Affinity purified by Protein G.
Conjugation	Unconjugated

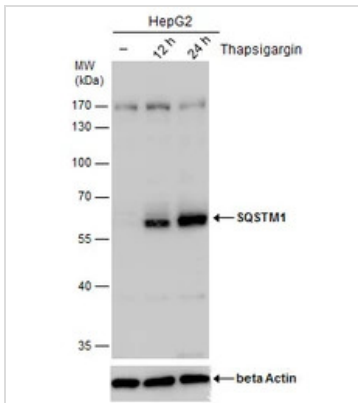
Note

For laboratory research use only. Not for any clinical, therapeutic, or diagnostic use in humans or animals. Not for animal or human consumption.

Purchasers shall not, and agree not to enable third parties to, analyze, copy, reverse engineer or otherwise attempt to determine the structure or sequence of the product.



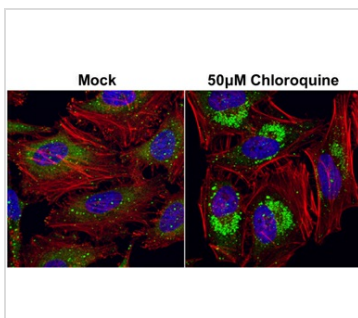
For full product information, images and publications, please visit our [website](#).

DATA IMAGES

GTX629888 WB Image

SQSTM1 antibody detects SQSTM1 protein by western blot analysis. Un-treated (-) and treated (+, Thapsigargin treatment for 12hrs and 24hrs) HepG2 whole cell extracts (30 µg) were separated by 10% SDS-PAGE, and the membrane was blotted with SQSTM1 antibody (GTX629888) diluted by 1:1000. The ACTB was used as internal control (GTX110564, 1:50000) shown at the bottom panel.


GTX629888 WB Image

Wild-type (WT) and SQSTM1 / P62 knockout (KO) 293T cell extracts (30 µg) were separated by 10% SDS-PAGE, and the membrane was blotted with SQSTM1 / P62 antibody [GT239] (GTX629888) diluted at 1:500. The HRP-conjugated anti-mouse IgG antibody (GTX213111-01) was used to detect the primary antibody.

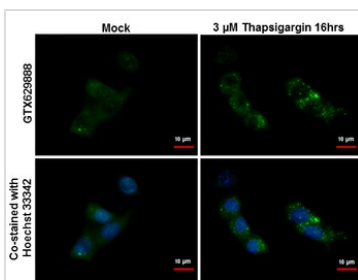

GTX629888 ICC/IF Image

SQSTM1 antibody [GT239] detects SQSTM1 protein at autophagosome by immunofluorescent analysis. Samples: HeLa cells mock (left) and treated with 50µM Chloroquine for 24 hr (right) were fixed in 4% paraformaldehyde at RT for 15 min.

Green: SQSTM1 protein stained by SQSTM1 antibody [GT239] (GTX629888) diluted at 1:2000.

Red: phalloidin, a cytoskeleton marker, stained by phalloidin (invitrogen, A12380) diluted at 1:200.

Blue: Hoechst 33342 staining.


GTX629888 ICC/IF Image

SQSTM1 antibody [GT239] detects SQSTM1 protein at autophagosome by immunofluorescent analysis. Samples: HepG2 cells treated with 3µM thapsigargin 16 hrs (right) and mock (left) were fixed in ice-cold MeOH for 10 min, permeabilize with cooled acetone for 1 min .

Green: SQSTM1 protein stained by SQSTM1 antibody [GT239] (GTX629888) diluted at 1:500.

Blue: Hoechst 33342 staining.



For full product information, images and publications, please visit our [website](https://www.genetex.com).