

SQSTM1 / P62 antibody [GT1478]

Cat. No. GTX629890

Host	Mouse
Clonality	Monoclonal
Isotype	IgG2b
Applications	WB, ICC/IF, IHC-Fr, FCM
Reactivity	Human, Mouse

References (11)

★★★★★ Review (9)

Package

100 µl, 25 µl

Applications

Application Note

*Optimal dilutions/concentrations should be determined by the researcher.

Suggested dilution	Recommended dilution
WB	1:500-1:3000
ICC/IF	1:100-1:1000
IHC-Fr	1:100-1:1000
FCM	1:50-1:200

Not tested in other applications.

Calculated MW 48 kDa. ([Note](#))**Product Note** This antibody may not be suitable for mouse WB and ICC/IF assay, as its mouse reactivity is based on IHC-Fr testing.

Properties

Form	Liquid
Buffer	PBS, 20% Glycerol
Preservative	No preservatives
Storage	Store as concentrated solution. Centrifuge briefly prior to opening vial. For short-term storage (1-2 weeks), store at 4°C. For long-term storage, aliquot and store at -20°C or below. Avoid multiple freeze-thaw cycles.
Concentration	1 mg/ml (Please refer to the vial label for the specific concentration.)
Immunogen	Recombinant protein encompassing a sequence within the center region of human SQSTM1 / P62. The exact sequence is proprietary.
Purification	Affinity purified by Protein G.
Conjugation	Unconjugated

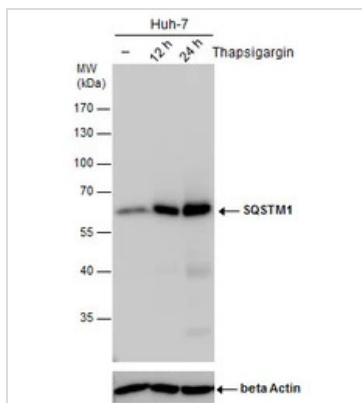


For full product information, images and publications, please visit our [website](#).

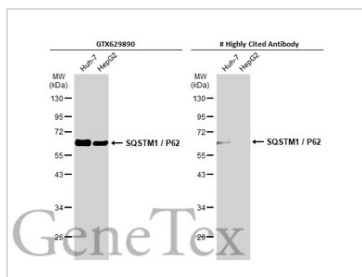
For laboratory research use only. Not for any clinical, therapeutic, or diagnostic use in humans or animals. Not for animal or human consumption.

Note

Purchasers shall not, and agree not to enable third parties to, analyze, copy, reverse engineer or otherwise attempt to determine the structure or sequence of the product.

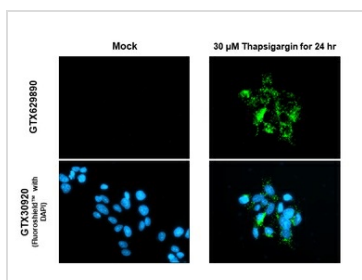
DATA IMAGES

GTX629890 WB Image

SQSTM1 antibody detects SQSTM1 protein by western blot analysis. Un-treated (-) and treated (+, Thapsigargin treatment for 12 hr and 24hr) Huh-7 whole cell extracts (30 µg) were separated by 10% SDS-PAGE, and the membrane was blotted with SQSTM1 antibody (GTX629890) diluted by 1:1000. The ACTB was used as internal control (GTX110564, 1:50000) shown at the bottom panel. The HRP-conjugated anti-mouse IgG antibody (GTX213111-01) was used to detect the primary antibody.


GTX629890 WB Image

Various whole cell extracts (30 µg) were separated by 10% SDS-PAGE, and the membrane was blotted with SQSTM1 / P62 antibody [GT1478] (GTX629890) diluted at 1:500. The HRP-conjugated anti-mouse IgG antibody (GTX213111-01) was used to detect the primary antibody.

*The competitor is not affiliated with GeneTex and does not endorse this product.


GTX629890 ICC/IF Image

SQSTM1 / P62 antibody [GT1478] detects SQSTM1 / P62 protein at cytoplasm by immunofluorescent analysis.

Sample: Mock and treated HepG2 cells were fixed in ice-cold MeOH for 5 min.

Green: SQSTM1 / P62 stained by SQSTM1 / P62 antibody [GT1478] (GTX629890) diluted at 1:500.

Blue: Fluoroshield with DAPI (GTX30920).

Scale bar= 10µm.



For full product information, images and publications, please visit our [website](https://www.genetex.com).