

ROCK1 + ROCK2 antibody [GT261]

Cat. No. GTX629971

| | |
|--------------|-------------------|
| Host | Mouse |
| Clonality | Monoclonal |
| Isotype | IgG1 |
| Applications | WB |
| Reactivity | Human, Mouse, Rat |

Package
100 µl, 25 µl

Applications

Application Note

*Optimal dilutions/concentrations should be determined by the researcher.

| Suggested dilution | Recommended dilution |
|--------------------|----------------------|
| WB | 1:500-1:3000 |

Not tested in other applications.

Calculated MW 158 kDa. ([Note](#))

Properties

| | |
|---------------|--|
| Form | Liquid |
| Buffer | PBS |
| Preservative | No preservative |
| Storage | Store as concentrated solution. Centrifuge briefly prior to opening vial. For short-term storage (1-2 weeks), store at 4°C. For long-term storage, aliquot and store at -20°C or below. Avoid multiple freeze-thaw cycles. |
| Concentration | 1 mg/ml (Please refer to the vial label for the specific concentration.) |
| Immunogen | Recombinant protein encompassing a sequence within the N-terminus region of human ROCK1. The exact sequence is proprietary. |
| Purification | Affinity purified by Protein G. |
| Conjugation | Unconjugated |

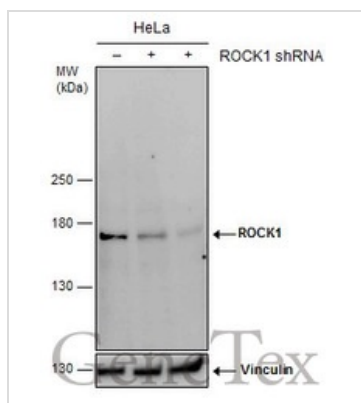
Note

For laboratory research use only. Not for any clinical, therapeutic, or diagnostic use in humans or animals. Not for animal or human consumption.

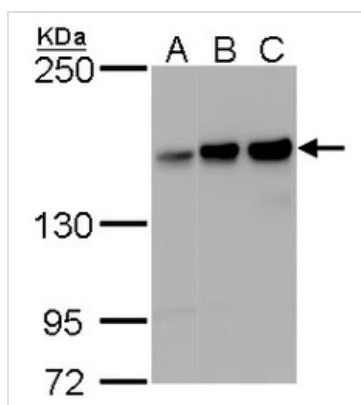
Purchasers shall not, and agree not to enable third parties to, analyze, copy, reverse engineer or otherwise attempt to determine the structure or sequence of the product.



For full product information, images and publications, please visit our [website](#).

DATA IMAGES

GTX629971 WB Image

Non-transfected (-) and transfected (+) HeLa whole cell extracts (30 µg) were separated by 5% SDS-PAGE, and the membrane was blotted with ROCK1 + ROCK2 antibody [GT261] (GTX629971) diluted at 1:2000.


GTX629971 WB Image

ROCK1 + ROCK2 antibody [GT261] detects ROCK1 protein by Western blot analysis.

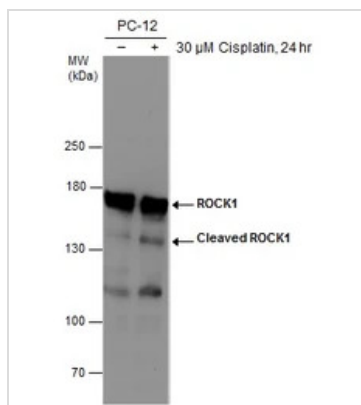
A. 30 µg 293T whole cell lysate/extract

B. 30 µg HeLa whole cell lysate/extract

C. 30 µg HepG2 whole cell lysate/extract

5 % SDS-PAGE

ROCK1 + ROCK2 antibody [GT261] (GTX629971) dilution: 1:1000


GTX629971 WB Image

Untreated (-) and treated (+) PC-12 whole cell extracts (30 µg) were separated by 5% SDS-PAGE, and the membrane was blotted with ROCK1 + ROCK2 antibody [GT261] (GTX629971) diluted at 1:500.

The observed M.W. is based on the publication: [PMID: 23392171](#), [PMID: 16983089](#)



For full product information, images and publications, please visit our [website](#).