

ROCK1 + ROCK2 antibody [GT464]

Cat. No. GTX629972

Host	Mouse
Clonality	Monoclonal
Isotype	IgG2b
Applications	WB
Reactivity	Human, Mouse, Rat

References (1)

Package

100 µl, 25 µl

Applications

Application Note

*Optimal dilutions/concentrations should be determined by the researcher.

Suggested dilution	Recommended dilution
WB	1:500-1:3000

Not tested in other applications.

Calculated MW 158 kDa. ([Note](#))

Properties

Form	Liquid
Buffer	PBS
Preservative	No preservatives
Storage	Store as concentrated solution. Centrifuge briefly prior to opening vial. For short-term storage (1-2 weeks), store at 4°C. For long-term storage, aliquot and store at -20°C or below. Avoid multiple freeze-thaw cycles.
Concentration	1 mg/ml (Please refer to the vial label for the specific concentration.)
Immunogen	Recombinant protein encompassing a sequence within the N-terminus region of human ROCK1. The exact sequence is proprietary.
Purification	Affinity purified by Protein G.
Conjugation	Unconjugated

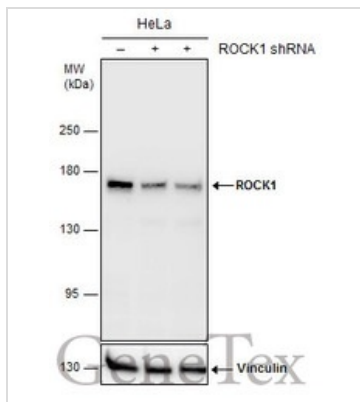
Note

For laboratory research use only. Not for any clinical, therapeutic, or diagnostic use in humans or animals. Not for animal or human consumption.

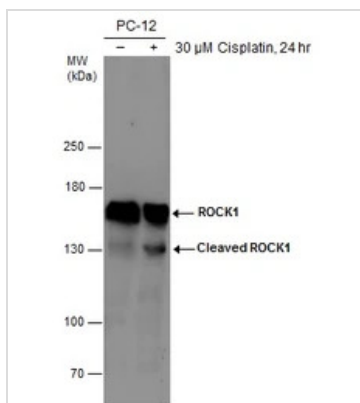
Purchasers shall not, and agree not to enable third parties to, analyze, copy, reverse engineer or otherwise attempt to determine the structure or sequence of the product.



For full product information, images and publications, please visit our [website](#).

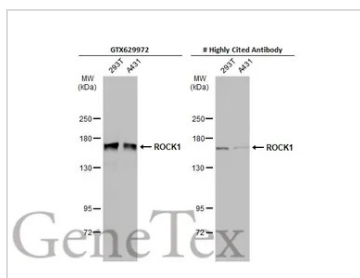
DATA IMAGES

GTX629972 WB Image

Non-transfected (-) and transfected (+) HeLa whole cell extracts (30 µg) were separated by 5% SDS-PAGE, and the membrane was blotted with ROCK1 + ROCK2 antibody [GT464] (GTX629972) diluted at 1:3000.


GTX629972 WB Image

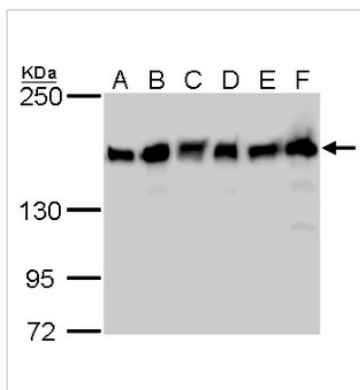
Untreated (-) and treated (+) PC-12 whole cell extracts (30 µg) were separated by 5% SDS-PAGE, and the membrane was blotted with ROCK1 + ROCK2 antibody [GT464] (GTX629972) diluted at 1:500.

The observed M.W. is based on the publication: [PMID: 23392171](https://pubmed.ncbi.nlm.nih.gov/23392171/), [PMID: 16983089](https://pubmed.ncbi.nlm.nih.gov/16983089/)


GTX629972 WB Image

Various whole cell extracts (30 µg) were separated by 5% SDS-PAGE, and the membranes were blotted with ROCK1 + ROCK2 antibody [GT464] (GTX629972) diluted at 1:1000 and competitor's antibody diluted at 1:1000. The HRP-conjugated anti-mouse IgG antibody (GTX213111-01) was used to detect the primary antibody.

*The competitor is not affiliated with GeneTex and does not endorse this product.


GTX629972 WB Image

ROCK1 + ROCK2 antibody [GT464] detects ROCK1 + ROCK2 protein by Western blot analysis.

- A. 30 µg Neuro2A whole cell lysate/extract
- B. 30 µg GL261 whole cell lysate/extract
- C. 30 µg NIH-3T3 whole cell lysate/extract
- D. 30 µg BCL-1 whole cell lysate/extract
- E. 30 µg Raw264.7 whole cell lysate/extract
- F. 30 µg C2C12 whole cell lysate/extract

5 % SDS-PAGE

ROCK1 + ROCK2 antibody [GT464] (GTX629972) dilution: 1:1000



For full product information, images and publications, please visit our [website](https://www.genetex.com).