

TET1 antibody [GT465]

Cat. No. GTX629974

| | |
|---------------------|------------|
| Host | Mouse |
| Clonality | Monoclonal |
| Isotype | IgG1 |
| Applications | WB, ICC/IF |
| Reactivity | Human |

★ ★ ★ ★ ★ Review (1)

Package
100 µl, 25 µl

Applications

Application Note

*Optimal dilutions/concentrations should be determined by the researcher.

| Suggested dilution | Recommended dilution |
|--------------------|----------------------|
| WB | 1:500-1:3000 |
| ICC/IF | 1:100-1:1000 |

Not tested in other applications.

Calculated MW 235 kDa. ([Note](#))

Properties

| | |
|----------------------|--|
| Form | Liquid |
| Buffer | PBS |
| Preservative | No preservatives |
| Storage | Store as concentrated solution. Centrifuge briefly prior to opening vial. For short-term storage (1-2 weeks), store at 4°C. For long-term storage, aliquot and store at -20°C or below. Avoid multiple freeze-thaw cycles. |
| Concentration | 1 mg/ml (Please refer to the vial label for the specific concentration.) |
| Immunogen | Recombinant protein encompassing a sequence within the center region of human TET1. The exact sequence is proprietary. |
| Purification | Affinity purified by Protein G. |
| Conjugation | Unconjugated |

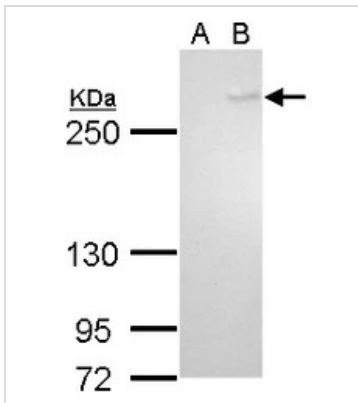
Note

For laboratory research use only. Not for any clinical, therapeutic, or diagnostic use in humans or animals. Not for animal or human consumption.

Purchasers shall not, and agree not to enable third parties to, analyze, copy, reverse engineer or otherwise attempt to determine the structure or sequence of the product.



For full product information, images and publications, please visit our [website](#).

DATA IMAGES

GTX629974 WB Image

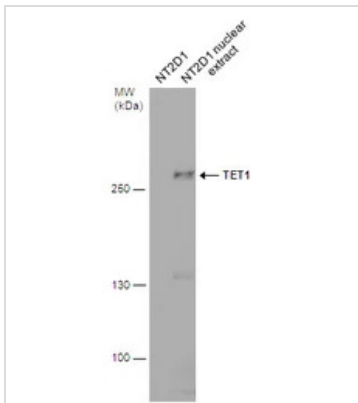
TET1 antibody [GT465] detects TET1 protein by Western blot analysis.

A. 30 µg 293T

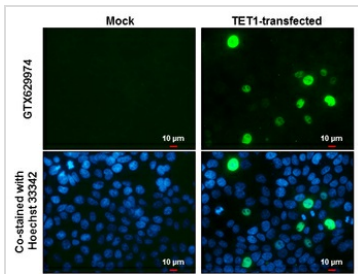
B. 30 µg of DDDD-K-human TET1-transfected 293T cells

5 % SDS-PAGE

TET1 antibody [GT465] (GTX629974) dilution: 1:1000


GTX629974 WB Image

NT2D1 whole cell and nuclear extracts (30 µg) were separated by 5% SDS-PAGE, and the membrane was blotted with TET1 antibody [GT465] (GTX629974) diluted at 1:500.


GTX629974 ICC/IF Image

TET1 antibody [GT465] detects TET1 protein at nucleus by immunofluorescent analysis.

Sample: Mock and transfected 293T cells were fixed in 4% paraformaldehyde at RT for 15 min.

Green: TET1 stained by TET1 antibody [GT465] (GTX629974) diluted at 1:1000.

Blue: Hoechst 33342 staining.

Scale bar= 10 µm.



For full product information, images and publications, please visit our [website](https://www.genetex.com).