

# Calnexin antibody [GT1563]

**Cat. No. GTX629976**

<b>Host</b>	Mouse
<b>Clonality</b>	Monoclonal
<b>Isotype</b>	IgG2a
<b>Applications</b>	WB, ICC/IF, IP, Dot
<b>Reactivity</b>	Human, Mouse, Rat

References ( 6 )

Package

100 µl, 25 µl

## Applications

### Application Note

\*Optimal dilutions/concentrations should be determined by the researcher.

Suggested dilution	Recommended dilution
WB	1:500-1:10000
ICC/IF	1:100-1:1000
IP	Assay dependent
Dot	Assay dependent

Not tested in other applications.

**Calculated MW** 68 kDa. ( [Note](#) )

**Product Note** IP/MS validation is based on published data (PMID: 30377428).

## Properties

<b>Form</b>	Liquid
<b>Buffer</b>	PBS
<b>Preservative</b>	No preservatives
<b>Storage</b>	Store as concentrated solution. Centrifuge briefly prior to opening vial. For short-term storage (1-2 weeks), store at 4°C. For long-term storage, aliquot and store at -20°C or below. Avoid multiple freeze-thaw cycles.
<b>Concentration</b>	1 mg/ml (Please refer to the vial label for the specific concentration.)
<b>Immunogen</b>	Recombinant protein encompassing a sequence within the center region of human Calnexin. The exact sequence is proprietary.
<b>Purification</b>	Affinity purified by Protein G.
<b>Conjugation</b>	Unconjugated



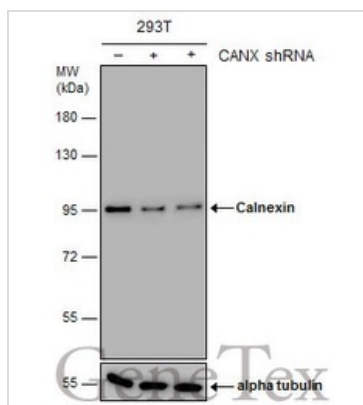
For full product information, images and publications, please visit our [website](#).

For laboratory research use only. Not for any clinical, therapeutic, or diagnostic use in humans or animals. Not for animal or human consumption.

## Note

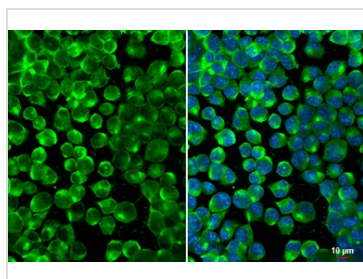
Purchasers shall not, and agree not to enable third parties to, analyze, copy, reverse engineer or otherwise attempt to determine the structure or sequence of the product.

## DATA IMAGES



### GTX629976 WB Image

Non-transfected (-) and transfected (+) 293T whole cell extracts (15 µg) were separated by 7.5% SDS-PAGE, and the membrane was blotted with Calnexin antibody [GT1563] (GTX629976) diluted at 1:6000.



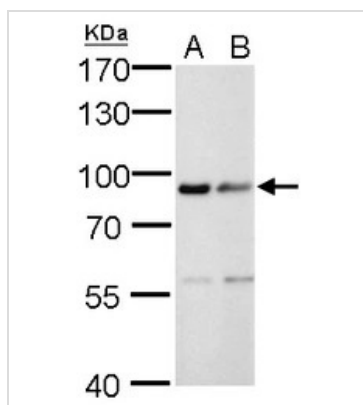
### GTX629976 ICC/IF Image

Calnexin antibody [GT1563] detects Calnexin protein at cytoplasm by immunofluorescent analysis.

Sample: Neuro2A cells were fixed in 4% paraformaldehyde at RT for 15 min.

Green: Calnexin stained by Calnexin antibody [GT1563] (GTX629976) diluted at 1:500.

Blue: Fluoroshield with DAPI (GTX30920).



### GTX629976 WB Image

Calnexin antibody [GT1563] detects Calnexin protein by Western blot analysis.

A. 30 µg PC-12 whole cell lysate/extract

B. 30 µg Rat-2 whole cell lysate/extract

7.5 % SDS-PAGE

Calnexin antibody [GT1563] (GTX629976) dilution: 1:500



For full product information, images and publications, please visit our [website](http://www.genetex.com).