

# Fumarate hydratase antibody [GT548]

**Cat. No. GTX630145**

<b>Host</b>	Mouse
<b>Clonality</b>	Monoclonal
<b>Isotype</b>	IgG2b
<b>Application</b>	WB
<b>Reactivity</b>	Human, Mouse, Rat

**Package**  
100 µl, 25 µl

## APPLICATION

### Application Note

\*Optimal dilutions/concentrations should be determined by the researcher.

Suggested dilution	Recommended dilution
WB	1:500-1:3000
Not tested in other applications.	

**Calculated MW** 55 kDa. ( [Note](#) )

## PROPERTIES

<b>Form</b>	Liquid
<b>Buffer</b>	PBS
<b>Preservative</b>	No preservative
<b>Storage</b>	Store as concentrated solution. Centrifuge briefly prior to opening vial. For short-term storage (1-2 weeks), store at 4°C. For long-term storage, aliquot and store at -20°C or below. Avoid multiple freeze-thaw cycles.
<b>Concentration</b>	1 mg/ml (Please refer to the vial label for the specific concentration.)
<b>Immunogen</b>	Recombinant protein encompassing a sequence within the center region of human Fumarate hydratase. The exact sequence is proprietary.
<b>Purification</b>	Affinity purified by Protein G.
<b>Conjugation</b>	Unconjugated

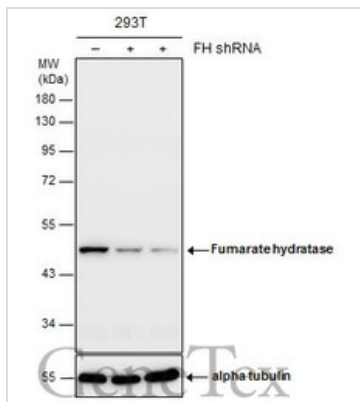
### Note

For laboratory research use only. Not for any clinical, therapeutic, or diagnostic use in humans or animals. Not for animal or human consumption.

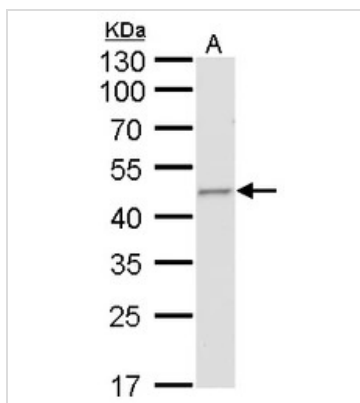
Purchasers shall not, and agree not to enable third parties to, analyze, copy, reverse engineer or otherwise attempt to determine the structure or sequence of the product.



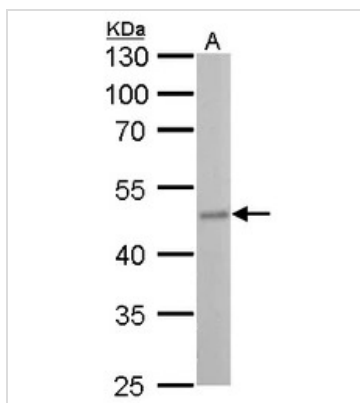
For full product information, images and publications, please visit our [website](#).

**DATA IMAGES**

**GTX630145 WB Image**

Non-transfected (–) and transfected (+) 293T whole cell extracts (30 µg) were separated by 10% SDS-PAGE, and the membrane was blotted with Fumarate hydratase antibody [GT548] (GTX630145) diluted at 1:500.


**GTX630145 WB Image**

Fumarate hydratase antibody [GT548] detects Fumarate hydratase protein by Western blot analysis.  
A. 50 µg mouse liver lysate/extract  
10 % SDS-PAGE  
Fumarate hydratase antibody [GT548] (GTX630145) dilution: 1:500


**GTX630145 WB Image**

Fumarate hydratase antibody [GT548] detects Fumarate hydratase protein by Western blot analysis.  
A. 50 µg rat liver lysate/extract  
10 % SDS-PAGE  
Fumarate hydratase antibody [GT548] (GTX630145) dilution: 1:500



For full product information, images and publications, please visit our [website](https://www.genetex.com).