

Histone H3S10ph (phospho Ser10) antibody [GT921]

Cat. No. GTX630185

Host	Mouse
Clonality	Monoclonal
Isotype	IgG1
Applications	WB, ICC/IF, IHC-P
Reactivity	Human, Mouse, Rat

Package
100 µl, 25 µl

Applications

Application Note

*Optimal dilutions/concentrations should be determined by the researcher.

Suggested dilution	Recommended dilution
WB	1:500-1:3000
ICC/IF	1:100-1:1000
IHC-P	1:100-1:1000

Not tested in other applications.

Properties

Form	Liquid
Buffer	PBS
Preservative	No preservative
Storage	Store as concentrated solution. Centrifuge briefly prior to opening vial. For short-term storage (1-2 weeks), store at 4°C. For long-term storage, aliquot and store at -20°C or below. Avoid multiple freeze-thaw cycles.
Concentration	1 mg/ml (Please refer to the vial label for the specific concentration.)
Immunogen	Carrier-protein conjugated synthetic peptide surrounding phospho Ser10 of human Histone H3. The exact sequence is proprietary.
Purification	Affinity purified by Protein G.
Conjugation	Unconjugated

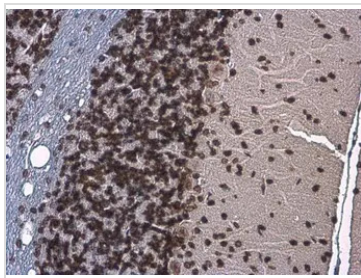
Note

For laboratory research use only. Not for any clinical, therapeutic, or diagnostic use in humans or animals. Not for animal or human consumption.

Purchasers shall not, and agree not to enable third parties to, analyze, copy, reverse engineer or otherwise attempt to determine the structure or sequence of the product.



For full product information, images and publications, please visit our [website](#).

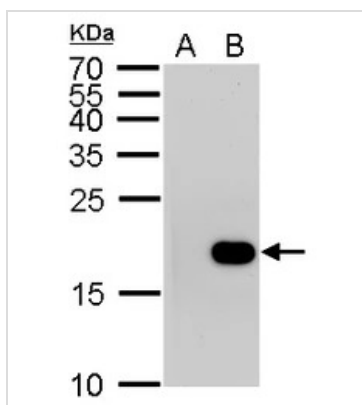
DATA IMAGES

GTX630185 IHC-P Image

Histone H3S10ph (phospho Ser10) antibody [GT921] detects Histone H3S10ph (phospho Ser10) protein at nucleus by immunohistochemical analysis.

Sample: Paraffin-embedded mouse brain.

Histone H3S10ph (phospho Ser10) stained by Histone H3S10ph (phospho Ser10) antibody [GT921] (GTX630185) diluted at 1:200.

Antigen Retrieval: Citrate buffer, pH 6.0, 15 min


GTX630185 WB Image

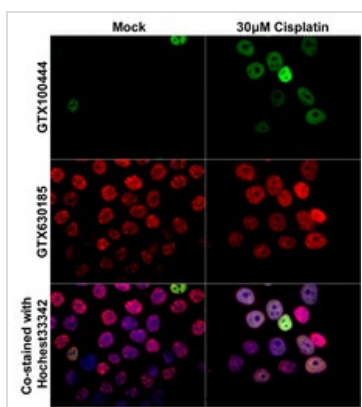
Histone H3 (phospho Ser10) antibody [GT921] detects Histone H3 (phospho Ser10) protein by western blot analysis.

A. 30 µg HeLa whole cell lysate/extract (untreated) |

B. 30 µg HeLa whole cell lysate/extract (100 ng/ml Nocodazole treatment for 24 hr)

15 % SDS-PAGE

Histone H3 (phospho Ser10) antibody [GT921] (GTX630185) dilution: 1:1000


GTX630185 ICC/IF Image

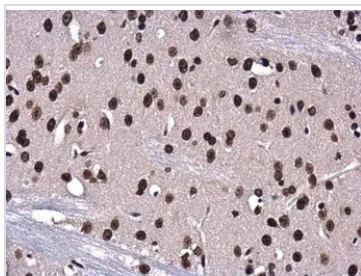
Histone H3S10ph (phospho Ser10) antibody [GT921] detects Histone H3S10ph (phospho Ser10) protein at nucleus by immunofluorescent analysis.

Samples: HCT116 cells mock (left) and treated with 30 µM Cisplatin for 24 hrs (right) were fixed in 4% paraformaldehyde at RT for 15 min.

Green: p21 Cip1 protein stained by p21 Cip1 antibody (GTX100444) diluted at 1:1000.

Red: Histone H3S10ph (phospho Ser10) protein stained by Histone H3S10ph (phospho Ser10) antibody [GT921] (GTX630185) diluted at 1:500.

Blue: Hoechst 33342 staining.


GTX630185 IHC-P Image

Histone H3S10ph (phospho Ser10) antibody [GT921] detects Histone H3S10ph (phospho Ser10) protein at cytoplasm and nucleus in rat brain by immunohistochemical analysis.

Sample: Paraffin-embedded rat brain.

Histone H3S10ph (phospho Ser10) antibody [GT921] (GTX630185) diluted at 1:250.

Antigen Retrieval: Citrate buffer, pH 6.0, 15 min



For full product information, images and publications, please visit our [website](http://www.genetex.com).