

PRMT1 antibody [GT10111]

Cat. No. GTX630187

Host	Mouse
Clonality	Monoclonal
Isotype	IgG2b
Application	WB, IHC-P
Reactivity	Human, Mouse

Reference (1)

Package

100 µl, 25 µl

APPLICATION

Application Note

*Optimal dilutions/concentrations should be determined by the researcher.

Suggested dilution	Recommended dilution
WB	1:500-1:3000
IHC-P	1:100-1:1000

Not tested in other applications.

Calculated MW 42 kDa. ([Note](#))

PROPERTIES

Form	Liquid
Buffer	PBS
Preservative	No preservative
Storage	Store as concentrated solution. Centrifuge briefly prior to opening vial. For short-term storage (1-2 weeks), store at 4°C. For long-term storage, aliquot and store at -20°C or below. Avoid multiple freeze-thaw cycles.
Concentration	1 mg/ml (Please refer to the vial label for the specific concentration.)
Immunogen	Carrier-protein conjugated synthetic peptide encompassing a sequence within the C-terminus region of human PRMT1. The exact sequence is proprietary.
Purification	Affinity purified by Protein G.
Conjugation	Unconjugated

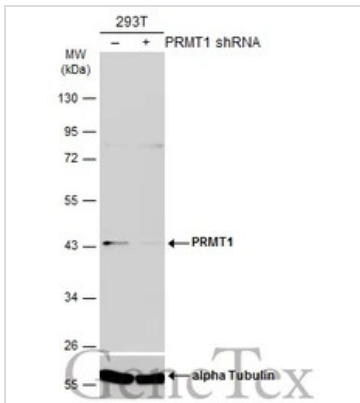
Note

For laboratory research use only. Not for any clinical, therapeutic, or diagnostic use in humans or animals. Not for animal or human consumption.

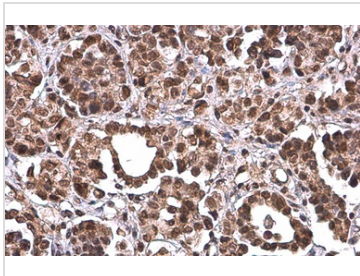
Purchasers shall not, and agree not to enable third parties to, analyze, copy, reverse engineer or otherwise attempt to determine the structure or sequence of the product.



For full product information, images and publications, please visit our [website](#).

DATA IMAGES

GTX630187 WB Image

Non-transfected (–) and transfected (+) 293T whole cell extracts (50 µg) were separated by 10% SDS-PAGE, and the membrane was blotted with PRMT1 antibody [GT10111] (GTX630187) diluted at 1:1000. The HRP-conjugated anti-mouse IgG antibody (GTX213111-01) was used to detect the primary antibody, and the signal was developed with Trident ECL plus-Enhanced.

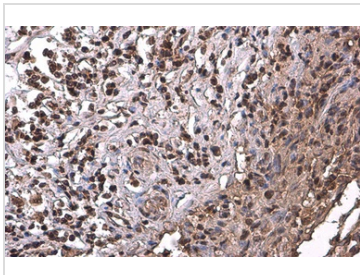

GTX630187 IHC-P Image

PRMT1 antibody [GT10111] detects PRMT1 protein at cytoplasm and nucleus by immunohistochemical analysis.

Sample: Paraffin-embedded human ovarian cancer.

PRMT1 stained by PRMT1 antibody [GT10111] (GTX630187) diluted at 1:200.

Antigen Retrieval: Citrate buffer, pH 6.0, 15 min

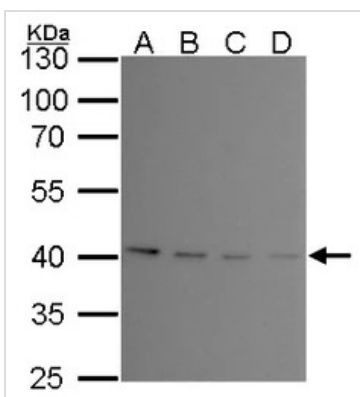

GTX630187 IHC-P Image

PRMT1 antibody [GT10111] detects PRMT1 protein at cytoplasm and nucleus by immunohistochemical analysis.

Sample: Paraffin-embedded human cervical carcinoma.

PRMT1 stained by PRMT1 antibody [GT10111] (GTX630187) diluted at 1:200.

Antigen Retrieval: Citrate buffer, pH 6.0, 15 min


GTX630187 WB Image

PRMT1 antibody [GT10111] detects PRMT1 protein by western blot analysis.

A 293T whole cell lysate/extract

B A431 whole cell lysate/extract

C HeLa whole cell lysate/extract

D HepG2 whole cell lysate/extract

10 % SDS-PAGE

PRMT1 antibody [GT10111] (GTX630187) dilution: 1:1000



For full product information, images and publications, please visit our [website](https://www.genetex.com).