

# Enterovirus 71 3C antibody [B3]

**Cat. No. GTX630191**

<b>Host</b>	Mouse
<b>Clonality</b>	Monoclonal
<b>Isotype</b>	IgG1
<b>Applications</b>	WB, FCM
<b>Reactivity</b>	Coxsackievirus A6, Enterovirus 71

References ( 10 )

Package

100 µl, 25 µl

## Applications

### Application Note

\*Optimal dilutions/concentrations should be determined by the researcher.

Suggested dilution	Recommended dilution
WB	1:500-1:3000
FCM	Assay dependent

Not tested in other applications.

**Product Note** This antibody is raised against Enterovirus 71, and it may cross react with Coxsackievirus A6 based on internal testing.

## Properties

<b>Form</b>	Liquid
<b>Buffer</b>	PBS, 20% Glycerol
<b>Preservative</b>	No preservatives
<b>Storage</b>	Store as concentrated solution. Centrifuge briefly prior to opening vial. For short-term storage (1-2 weeks), store at 4°C. For long-term storage, aliquot and store at -20°C or below. Avoid multiple freeze-thaw cycles.
<b>Concentration</b>	1 mg/ml (Please refer to the vial label for the specific concentration.)
<b>Immunogen</b>	The immunogen used to generate this antibody corresponds to EV71 3C
<b>Purification</b>	Affinity purified by Protein G.
<b>Conjugation</b>	Unconjugated

### Note

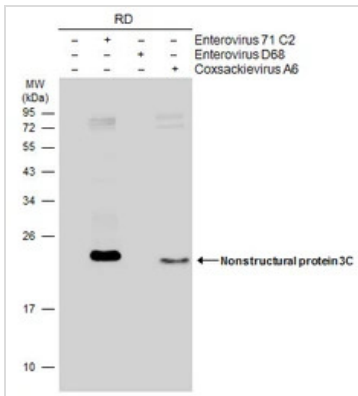
For laboratory research use only. Not for any clinical, therapeutic, or diagnostic use in humans or animals. Not for animal or human consumption.

Purchasers shall not, and agree not to enable third parties to, analyze, copy, reverse engineer or otherwise attempt to determine the structure or sequence of the product.



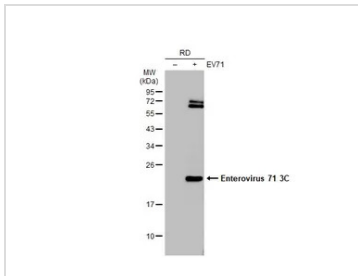
For full product information, images and publications, please visit our [website](#).

DATA IMAGES



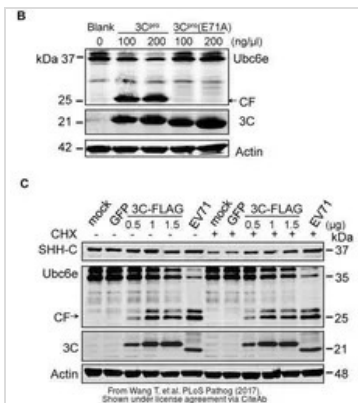
GTx630191 WB Image

Non-infected (–) and infected (+) RD whole cell extracts (20 µg) were separated by 12% SDS-PAGE, and the membrane was blotted with Enterovirus 71 3C antibody [B3] (GTx630191) diluted at 1:1000. The HRP-conjugated anti-mouse IgG antibody (GTx213111-01) was used to detect the primary antibody.



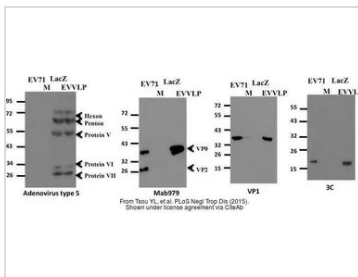
GTx630191 WB Image

Non-infected (–) and infected (+) RD whole cell extracts (30 µg) were separated by 12% SDS-PAGE, and the membrane was blotted with Enterovirus 71 3C antibody [B3] (GTx630191) diluted at 1:5000. The HRP-conjugated anti-mouse IgG antibody (GTx213111-01) was used to detect the primary antibody.



GTx630191 WB Image

The data was published in the journal PLoS Pathog in 2017. [PMID: 28985237](https://doi.org/10.1371/journal.ppat.1005237)



GTx630191 WB Image

The data was published in the journal PLoS Negl Trop Dis in 2015. [PMID: 25855976](https://doi.org/10.1371/journal.pntd.0003976)



For full product information, images and publications, please visit our [website](https://www.genetex.com).