

TDP43 antibody [GT733]

Cat. No. GTX630197

Host	Mouse
Clonality	Monoclonal
Isotype	IgG1
Application	WB, ICC/IF, IHC-P, IP
Reactivity	Human, Mouse, Rat

Reference (1)

★★★★★ Review (3)

Package

100 µl, 25 µl

APPLICATION

Application Note

*Optimal dilutions/concentrations should be determined by the researcher.

Suggested dilution	Recommended dilution
WB	1:500-1:3000
ICC/IF	1:100-1:1000
IHC-P	1:100-1:1000
IP	Assay dependent

Not tested in other applications.

Calculated MW 45 kDa. ([Note](#))

PROPERTIES

Form	Liquid
Buffer	PBS
Preservative	No preservative
Storage	Store as concentrated solution. Centrifuge briefly prior to opening vial. For short-term storage (1-2 weeks), store at 4°C. For long-term storage, aliquot and store at -20°C or below. Avoid multiple freeze-thaw cycles.
Concentration	1 mg/ml (Please refer to the vial label for the specific concentration.)
Immunogen	Recombinant protein encompassing a sequence within the center region of human TDP43. The exact sequence is proprietary.
Purification	Affinity purified by Protein G.
Conjugation	Unconjugated

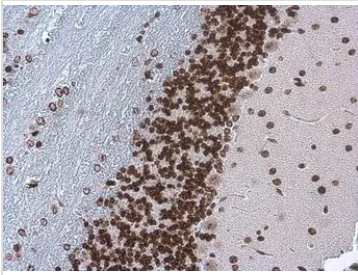


For full product information, images and publications, please visit our [website](#).

For laboratory research use only. Not for any clinical, therapeutic, or diagnostic use in humans or animals. Not for animal or human consumption.

Note

Purchasers shall not, and agree not to enable third parties to, analyze, copy, reverse engineer or otherwise attempt to determine the structure or sequence of the product.

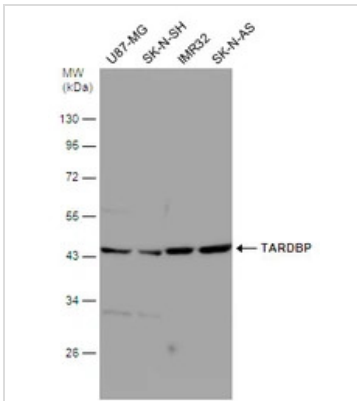
DATA IMAGES

GTX630197 IHC-P Image

TDP43 antibody [GT733] detects TDP43 protein at nucleus in mouse brain by immunohistochemical analysis.

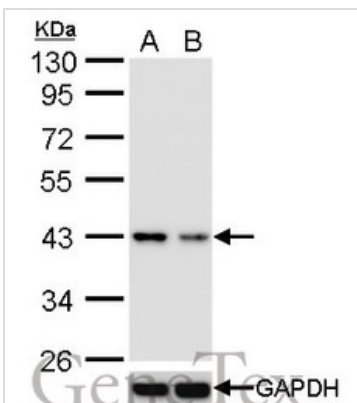
Sample: Paraffin-embedded mouse brain.

TDP43 antibody [GT733] (GTX630197) diluted at 1:200.

Antigen Retrieval: Citrate buffer, pH 6.0, 15 min


GTX630197 WB Image

Various whole cell extracts (30 µg) were separated by 10% SDS-PAGE, and the membrane was blotted with TARDBP antibody [GT733] (GTX630197) diluted at 1:1000. The signal was developed with Trident ECL plus-Enhanced.


GTX630197 WB Image

TARDBP antibody [GT733] validation by siRNA knock-down.

Upperpanel: TARDBP antibody [GT733] GTX630197

Lower panel: GAPDH antibody (GTX100118)

A. 30 µg 293T whole cell lysate/extract

B. 30 µg whole cell lysate/extract of TARDBP shRNA-transfected 293T cells

10 % SDS-PAGE

TARDBP antibody [GT733] (GTX630197) dilution: 1:1000

GAPDH antibody (GTX100118) dilution: 1:10000



For full product information, images and publications, please visit our [website](https://www.genetex.com).