

mTOR antibody [GT6611]

Cat. No. GTX630199

Host	Mouse
Clonality	Monoclonal
Isotype	IgG2a
Application	WB, ICC/IF
Reactivity	Human

Package
100 µl, 25 µl

APPLICATION

Application Note

*Optimal dilutions/concentrations should be determined by the researcher.

Suggested dilution	Recommended dilution
WB	1:500-1:3000
ICC/IF	1:100-1:1000

Not tested in other applications.

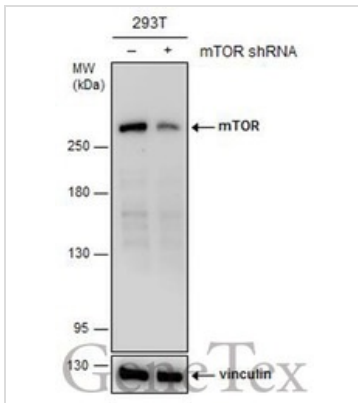
Calculated MW 289 kDa. ([Note](#))

PROPERTIES

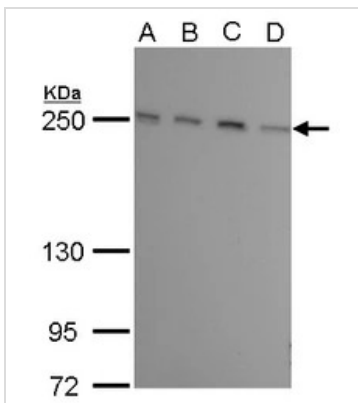
Form	Liquid
Buffer	PBS
Preservative	No preservative
Storage	Store as concentrated solution. Centrifuge briefly prior to opening vial. For short-term storage (1-2 weeks), store at 4°C. For long-term storage, aliquot and store at -20°C or below. Avoid multiple freeze-thaw cycles.
Concentration	1 mg/ml (Please refer to the vial label for the specific concentration.)
Immunogen	Recombinant protein encompassing a sequence within the C-terminus region of human mTOR. The exact sequence is proprietary.
Purification	Affinity purified by Protein G.
Conjugation	Unconjugated
Note	For laboratory research use only. Not for any clinical, therapeutic, or diagnostic use in humans or animals. Not for animal or human consumption. Purchasers shall not, and agree not to enable third parties to, analyze, copy, reverse engineer or otherwise attempt to determine the structure or sequence of the product.



For full product information, images and publications, please visit our [website](#).

DATA IMAGES

GTX630199 WB Image

Non-transfected (-) and transfected (+) 293T whole cell extracts (30 µg) were separated by 5% SDS-PAGE, and the membrane was blotted with mTOR antibody [GT6611] (GTX630199) diluted at 1:500.

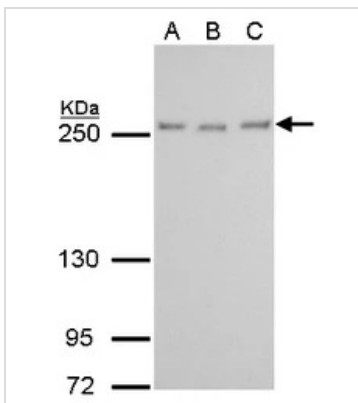

GTX630199 WB Image

mTOR antibody [GT6611] detects mTOR protein by western blot analysis.

- A. 30 µg 293T whole cell lysate/extract
- B. 30 µg A431 whole cell lysate/extract
- C. 30 µg HeLa whole cell lysate/extract
- D. 30 µg HepG2 whole cell lysate/extract

5 % SDS-PAGE

mTOR antibody [GT6611] (GTX630199) dilution: 1:500


GTX630199 WB Image

mTOR antibody [GT6611] detects mTOR protein by western blot analysis.

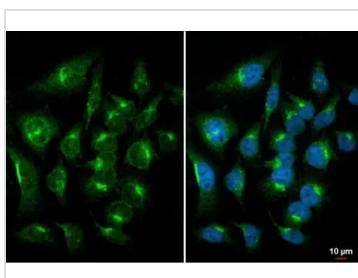
A Jurkat whole cell lysate/extract

BRaji

C NCI-H929 whole cell lysate/extract

5 % SDS-PAGE

mTOR antibody [GT6611] (GTX630199) dilution: 1:1000


GTX630199 ICC/IF Image

mTOR antibody [GT6611] detects mTOR protein at Golgi apparatus by immunofluorescent analysis.

Sample: HeLa cells were fixed in 4% paraformaldehyde at RT for 15 min.

Green: mTOR stained by mTOR antibody [GT6611] (GTX630199) diluted at 1:500.

Blue: Fluoroshield with DAPI (GTX30920).



For full product information, images and publications, please visit our [website](https://www.genetex.com).