

## Nestin antibody [GT623]

Cat. No. GTX630201

Host	Mouse
Clonality	Monoclonal
Isotype	IgG1
Applications	WB, ICC/IF
Reactivity	Human

References ( 17 )

Package

100 µl, 25 µl

## PRODUCT

## Summary

Nestin antibody recognizes nestin, a type-IV intermediate filament protein that migrates at ~240 kDa on western blot. Nestin is an established marker of mesodermal and neuroectodermal fates, and is expressed in neural stem cells. It is also enriched in endothelial cells, regardless of their proliferative state.

## Applications

## Application Note

\*Optimal dilutions/concentrations should be determined by the researcher.

Suggested dilution	Recommended dilution
WB	1:500-1:3000
ICC/IF	1:100-1:1000

Not tested in other applications.

**Calculated MW** 177 kDa. ( [Note](#) )

**Product Note** We do not recommend use of this product for Mouse,Rat samples.

## Properties

Form	Liquid
Buffer	PBS, 20% Glycerol
Preservative	No Preservative
Storage	Store as concentrated solution. Centrifuge briefly prior to opening vial. For short-term storage (1-2 weeks), store at 4°C. For long-term storage, aliquot and store at -20°C or below. Avoid multiple freeze-thaw cycles.
Concentration	1 mg/ml (Please refer to the vial label for the specific concentration.)
Immunogen	Recombinant protein encompassing a sequence within the C-terminus region of human Nestin. The exact sequence is proprietary.
Purification	Affinity purified by Protein G.
Conjugation	Unconjugated



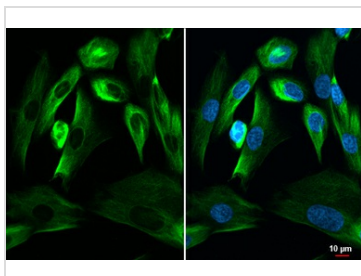
For full product information, images and publications, please visit our [website](#).

For laboratory research use only. Not for any clinical, therapeutic, or diagnostic use in humans or animals. Not for animal or human consumption.

## Note

Purchasers shall not, and agree not to enable third parties to, analyze, copy, reverse engineer or otherwise attempt to determine the structure or sequence of the product.

## DATA IMAGES



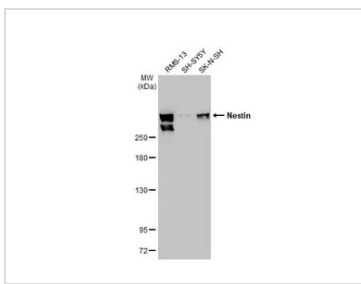
### GTX630201 ICC/IF Image

Nestin antibody [GT623] detects Nestin protein at cytoskeleton by immunofluorescent analysis.

Sample: SK-N-SH cells were fixed in ice-cold MeOH for 5 min.

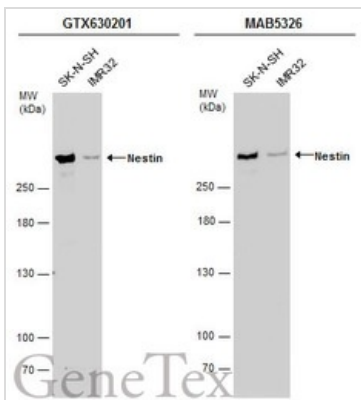
Green: Nestin stained by Nestin antibody [GT623] (GTX630201) diluted at 1:500.

Blue: Fluoroshield with DAPI (GTX30920).



### GTX630201 WB Image

Various whole cell extracts (30 µg) were separated by 5% SDS-PAGE, and the membrane was blotted with Nestin antibody [GT623] (GTX630201) diluted at 1:1000. The HRP-conjugated anti-mouse IgG antibody (GTX213111-01) was used to detect the primary antibody.



### GTX630201 WB Image

Various whole cell extracts (30 µg) were separated by 5% SDS-PAGE, and the membranes were blotted with Nestin antibody [GT623] (GTX630201) diluted at 1:1000 and competitor's antibody (MAB5326) diluted by 1:1000. The HRP-conjugated anti-mouse IgG antibody (GTX213111-01) was used to detect the primary antibody.

\*The competitor is not affiliated with GeneTex and does not endorse this product.



For full product information, images and publications, please visit our [website](https://www.genetex.com).