

CSE1L antibody [GT5111]

Cat. No. GTX630394

Host	Mouse
Clonality	Monoclonal
Isotype	IgG2b
Applications	WB, ICC/IF
Reactivity	Human, Mouse, Rat

Package
100 µl, 25 µl

Applications

Application Note

*Optimal dilutions/concentrations should be determined by the researcher.

Suggested dilution	Recommended dilution
WB	1:500-1:3000
ICC/IF	1:100-1:1000

Not tested in other applications.

Calculated MW 110 kDa. ([Note](#))

Properties

Form	Liquid
Buffer	PBS
Preservative	No preservative
Storage	Store as concentrated solution. Centrifuge briefly prior to opening vial. For short-term storage (1-2 weeks), store at 4°C. For long-term storage, aliquot and store at -20°C or below. Avoid multiple freeze-thaw cycles.
Concentration	1 mg/ml (Please refer to the vial label for the specific concentration.)
Immunogen	Recombinant protein encompassing a sequence within the center region of human CSE1L. The exact sequence is proprietary.
Purification	Affinity purified by Protein G.
Conjugation	Unconjugated

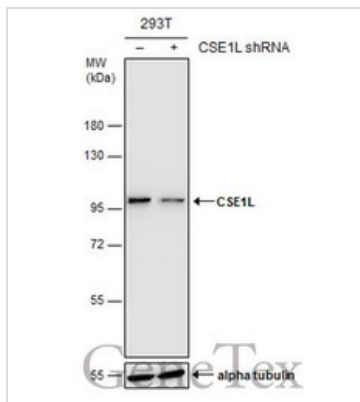
Note

For laboratory research use only. Not for any clinical, therapeutic, or diagnostic use in humans or animals. Not for animal or human consumption.

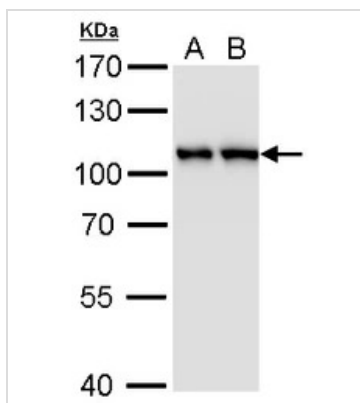
Purchasers shall not, and agree not to enable third parties to, analyze, copy, reverse engineer or otherwise attempt to determine the structure or sequence of the product.



For full product information, images and publications, please visit our [website](#).

DATA IMAGES

GTX630394 WB Image

Non-transfected (–) and transfected (+) 293T whole cell extracts (15 µg) were separated by 7.5% SDS-PAGE, and the membrane was blotted with CSE1L antibody [GT5111] (GTX630394) diluted at 1:1000.


GTX630394 WB Image

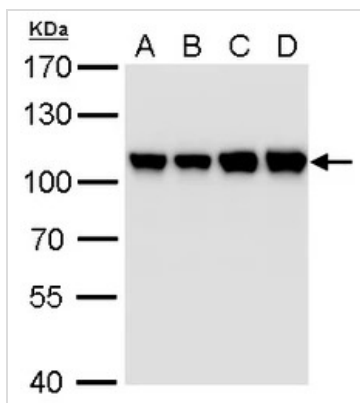
CSE1L antibody [GT5111] detects CSE1L protein by western blot analysis.

A. 30 µg PC-12 whole cell lysate/extract

B. 30 µg Rat2 whole cell lysate/extract

7.5 % SDS-PAGE

CSE1L antibody [GT5111] (GTX630394) dilution: 1:1000


GTX630394 WB Image

CSE1L antibody [GT5111] detects CSE1L protein by western blot analysis.

A. 30 µg 293T whole cell lysate/extract

B. 30 µg A431 whole cell lysate/extract

C. 30 µg HeLa whole cell lysate/extract

D. 30 µg HepG2 whole cell lysate/extract

7.5 % SDS-PAGE

CSE1L antibody [GT5111] (GTX630394) dilution: 1:1000



For full product information, images and publications, please visit our [website](http://www.genetex.com).